

UNITED

CATALOG | 2023



BEYOND



www.umwsiam.com



“

My board joins me in thanking all of you for seeing us through these 75 years and we look forward to many more years of continued alliance and co-operation.

”

Chairman Message

75TH ANNIVERSARY

Our esteemed customers, principals, bankers, joint venture partners, colleagues and friends.

I have great pleasure in sharing a few words with you on United Motor Works (Siam) PCL momentous milestone the celebration of our 75th anniversary.

My father started this company in 1947 in Bangkok Chinatown district with a few Thai and foreign shareholders. Subsequently we moved to Surawong Road and along the way took on several world renowned agencies like Briggs & Stratton gasoline engine, Hitachi construction equipment, Sun Automotive Test and Service equipment, Bishamon post lift, Murray and Haley lawn mower, Mitsubishi generator set, etc.

Today 75 years on, we have relocated to larger premises in Rangsit and are representing principals like, Mitsubishi forklift, JLG access equipment, Ammco/Coats and Mondolfo Ferro garage equipment, Rocket industrial battery, Industrial Air Compressor, Hydrolution hydraulic tools, Johnbean brake lathe, etc.

And, a successful joint venture with Mitsubishi HC Capital (Thailand) for our lease and rental assets management under our subsidiary – United Capital Equipment Co., Ltd.

All these achievements would not have been possible without your help and co-operation for which I am most grateful and truly indebted.

My board joins me in thanking all of you for seeing us through these 75 years and we look forward to many more years of continued alliance and co-operation.

Sincerely Yours,

Timothy Chia

Chairman

United Motor Works (Siam) PCL.

January, 2023



We are **UNITED** We are Solution Provider

From a relatively humble beginning in 1947, United Motor Works (Siam) Public Company Limited (UMWS) has achieved its business presence today through sustained business growth and continuous expansion. In 2006, "UMWS" became a member of the HUP SOON GLOBAL GROUP to further strengthening its position in the market and guaranteeing not only its success but also its financial security. We are determined to be a leading marketer and industrial equipment solution provider focused on "Safety and Solution". We serve customers with quality and speedy response in the 3 service centres, North Centre, East Centre and West Centre. With our long experience, you are assured to get utmost satisfaction from our professional consultants and team, as well as world class quality products. We provide customers the quality solution to create greater customer experience.

MILESTONES

“A Good business reputation does not spring up overnight but grows slowly and soundly because it is rooted in the solid ground of customer satisfaction.”

Chia Cheng Guan | Founder of Hup Soon Global



CONTENTS

Material Handling	6
Mitsubishi Forklift Trucks	7
IC Trucks	
• Mitsubishi Grendia	8
• Mitsubishi Clasidia	14
Electric Forklifts	
• Counterbalance Trucks	15
• Warehouse Trucks	19
MLift Trucks	30
Lithium-Ion Battery	38
Forklift Attachment	40
<hr/>	
Mobile Elevating Work Platform	42
Electric & Hybrid Boom Lift	44
Telescopic Boom Lift	46
Toucan	50
Compact Crawler	52
Scissor Lift	54
Vertical	56
<hr/>	
Automotive Garage Equipment	59
Combination Brake Lathe	63
Tyre Changer	64
Wheel Balancer	66
Truck Wheel Balancer	67
Computerized Wheel Aligners	67
Lifting Equipment	68
Air Compressor	72
Air Dryer	74
Wheel Chargers	75
Battery Electrical System Testers	76
Four Post Runway Forklift Service lift	77
Tyre Sensor	78
Portable Inflator	79
<hr/>	
Hydraulic Tools & Machines	80
Hydraulic Cylinders	81
Hydraulic Pumps	86
Hydraulic Pullers	92
Toe Jacks	98
Hydraulic Spreaders	99
Hydraulic Lifting Wedge	100
Nut Splitters	101
Hydraulic Flange Spreader	102
Manufacturing Beveling Machine	103
Portable Multi-Function Line Boring Machine	105
Square Drive Hydraulic Torque Wrench	107
Low Profile Hydraulic Torque Wrench	108
Single Stage Hydraulic Bolt Tensioner	109
New Style Electric Pump For Hydraulic Wrench	110
Strand Jacking	111
<hr/>	
After Market	112
Battery Solution	113
Parts / Components	124
Fleet management	131
Rental	132
Used	133
<hr/>	
Royal Lift Truck	137
Royal Lift Truck LI-ION Battery	139
Royal Lift Truck Terrain	141



FORKLIFT TRUCK

ALL THE PERFORMANCE YOU NEED

More quality... More performance... More reliability and more value for money... It's no wonder that businesses which rely on their trucks, rely on Mitsubishi. We deploy a diverse lineup of products to meet a variety of needs in environments ranging from ports and distribution centers, to factories and warehouses. Our forklift trucks make your business more productive and profitable. Trucks that are more economical for you to run and maintain, more environmentally friendly.



GASOLINE/LPG FORKLIFT

The sophisticated engine technology of our LPG counterbalance trucks, together with advanced design in every other component and system, delivers high efficiency and low emissions.



DIESEL FORKLIFT

Our diesel counterbalance engineering blends power and durability with operating economy, ergonomics and environmental friendliness.



ELECTRIC FORKLIFT

Innovative design and advanced electronic technology make our electric counterbalance trucks unbeatable for performance, user-friendliness and sheer flexibility. 3 and 4 Wheel Counterbalance Trucks are available.



WAREHOUSE EQUIPMENT

Our exceptional standards of quality, reliability and value are applied equally to a range of warehouse equipment that covers every handling and storage situation. We have planned maintenance, unmatched industry parts availability, training, manufacturer-supported programs and a complete selection of warehouse products, all backed by full market coverage.



GRENDA DIESEL

Developed to help your operator achieve maximum productivity, while minimising running costs, GRENDA sets the highest standards for IC engine counterbalance forklift trucks.

With its exceptional fuel economy, durable components and low-maintenance design, GRENDA makes perfect business sense. What's more, it comes with a package of advanced features, fitted as standard, that offers true value for money.

Fast, stable and exceptionally powerful, GRENDA forklift trucks offer a potent combination of high efficiency and low emissions in line with Euro Stage V regulations.

To that, Mitsubishi Forklift Trucks has added a host of ergonomic features to maximise comfort, control and precision. The result is a forklift that can be relied upon to deliver top performance, whatever the application, whatever the conditions.

- Travel hydraulic interlock improve vehicle safety
- Large capacity engine
- Memory type fuel gauge enable hassle free fuel level checking
- Double action parking brake prevent release of parking brake, enable safety
- Minimized operator's fatigue with suspension seat
- Standard LED lights
- Integrated Presence System (IPS) prevents accidents caused by unexpected movement of unmanned forklift trucks
- Easy operation
- Operator comfort
- Excellent visibility
- Centralized maintenance area

FD15-35N



TYPE	MODEL	CAPACITY	LOAD CENTER	MAXIMUM MAST HEIGHT
Diesel	FD15N	1500kg	500mm	7000mm
	FD18N	1750kg	500mm	7000mm
	FD20CN	2000kg	500mm	5500mm
	FD20N	2000kg	500mm	7000mm
	FD25N	2500kg	500mm	7000mm
	FD30N	3000kg	500mm	7000mm
	FD35N	3500kg	500mm	6000mm

FD40-55N



TYPE	MODEL	CAPACITY	LOAD CENTER	MAXIMUM MAST HEIGHT
Diesel	FD40N	4000kg	500mm	7000mm
	FD45N	4500kg	500mm	7000mm
	FD50CN	5000kg	500mm	7000mm
	FD50N	5000kg	600mm	7000mm
	FD55N	5500kg	600mm	6000mm

FD70-100NH



TYPE	MODEL	CAPACITY	LOAD CENTER	MAXIMUM MAST HEIGHT
Diesel	FD70NH	7000kg	600mm	8000mm
	FD80NH	8000kg	600mm	8000mm
	FD100NH	10000kg	600mm	6000mm

FD100-160(S)NL



TYPE	MODEL	CAPACITY	LOAD CENTER	MAXIMUM MAST HEIGHT
Diesel	FD100NL	10000kg	600mm	6000mm
	FD115NL	11500kg	600mm	6000mm
	FD120NL	12000kg	600mm	6000mm
	FD135NL	13500kg	600mm	6000mm
	FD150SNL	15000kg	600mm	6000mm
	FD160SNL	16000kg	600mm	6000mm

- Capacity rate is calculated at Mitsubishi manufacture standard mast height., without attachment
- The capacity might be varied due to the mast height or with attachment.

Please contact our sales consultant for more details.



Performance Reliability

- Electric Directional Lever allows operator to effortlessly change the direction of the forklift truck with just a flick of the finger.
- Performance mode selection allows operators to choose between power mode or economy mode.
- Speed Control for easily control the full speed of the truck by switching between three transmission speed simply through a dial switch.
- Electric Parking Brake System allows operator to effortlessly engage the park brake simply by the push of a button.
- Wide Visibility Cabin helps improve overall visibility through the elimination of front and rear pillars, also equip with air conditioner to fully cool down the cabin in a hot weather.
- Adjustable Suspension Seat allows operators to achieve maximum comfort not just by accommodating to their preferred seating position only, but also swivels when operator needs more visibility to the rear.

FD160-230NE

TYPE	MODEL	CAPACITY	LOAD CENTER	MAX MAST HEIGHT
Internal Combustion Pneumatic Tyre	FD160NE	16000kg	900mm	6000mm
	FD180NE	18000kg	900mm	6000mm
	FD200NE	20000kg	900mm	6000mm
	FD230NE	23000/ 20000kg	900/1250mm	6000mm



GRENDIA GAS/LPG

Mitsubishi Forklift Trucks new FG series is a whole new breed of forklift truck that's been built from the ground up to meet the demands of users who require heavy duty, robust and reliable machines.

The latest in a series of forklift trucks, the new N-Generation has won accolades from its users for its capacity to work even in the most demanding situations while being friendly to the environment. What's more, these forklift trucks represents the latest in Mitsubishi transport technology, enhanced safety and commitment to keeping the world green.

- Integrated Presence System (IPS) prevents accidents caused by unexpected movement of unmanned forklift trucks
- Powerful lifting speed up to 640mm/s when loaded
- Smooth running
- Eco-friendly vehicle
- Lift lock prevents accidental forks lowering when keyswitch is off
- 44kw engine allows high lifting and travel speeds

FG15-FG35N



FGE15-FGE35N



TYPE	MODEL	CAPACITY	LOAD CENTER	MAXIMUM MAST HEIGHT
Gasoline	FG15N	1500kg	500mm	7000mm
	FG15ZN	1500kg	500mm	7000mm
	FG18N	1750kg	500mm	7000mm
	FG18ZN	1750kg	500mm	7000mm
	FG20CN	2000kg	500mm	5500mm
	FG20N	2000kg	500mm	7000mm
	FG20ZN	2000kg	500mm	7000mm
	FG25N	2500kg	500mm	7000mm
	FG25ZN	2500kg	500mm	7000mm
	FG30N	3000kg	500mm	7000mm
	FG35N	3500kg	500mm	6000mm

TYPE	MODEL	CAPACITY	LOAD CENTER	MAXIMUM MAST HEIGHT
Electronic Controlled Gasoline	FGE15N	1500kg	500mm	7000mm
	FGE18N	1750kg	500mm	7000mm
	FGE20CN	2000kg	500mm	5500mm
	FGE20N	2000kg	500mm	7000mm
	FGE20ZN	2000kg	500mm	7000mm
	FGE25N	2500kg	500mm	7000mm
	FGE25ZN	2500kg	500mm	7000mm
	FGE30N	3000kg	500mm	7000mm
	FGE35N	3500kg	500mm	6000mm

FG40-FG55N



TYPE	MODEL	CAPACITY	LOAD CENTER	MAXIMUM MAST HEIGHT
Gasoline	FG40N	4000kg	500mm	7000mm
	FG45N	4500kg	500mm	7000mm
	FG50CN	5000kg	500mm	7000mm
	FG50N	5000kg	600mm	7000mm
	FG55N	5500kg	600mm	6000mm

- Capacity rate is calculated at Mitsubishi manufacture standard mast height, without attachment
- The capacity might be varied due to the mast height or with attachment.

Please contact our sales consultant for more details.

GRENDIA'S ECO-POWER

MEETS THE ENVIRONMENTAL REQUIREMENTS OF TODAY AND TOMORROW



Electronically controlled gasoline engine GK25E

TWO-LEVEL HIGH/LOW SPEED LIMITER



The Grendia's automatic speed limiter can be set to two levels – outdoors (HIGH) and indoors (LOW). Drivers can alternate between the two speed limits at the flick of a switch, helping them to choose the most appropriate fuel efficiency for the location.

* Standard for Electronically Controlled Gasoline Engine Trucks

2007 EMISSION STANDARDS COMPLIANT*: NEW ELECTRONICALLY CONTROLLED GASOLINE ENGINE

Mitsubishi Grendia's advanced gasoline engine, which helped pioneer the standard use of electronically controlled fuel injection and three-way catalytic converters in forklift trucks, has evolved even further. The new Grendia has achieved remarkable environmental controls and complies with all 2007 Emission Standards while still maintaining high performance and reliability levels.

* 2007 Emissions Standard for Specific Special Vehicles (including off-road vehicles)

- Compliant with Emissions Standard for Specific Special Vehicles
- Ministry of the Environment
- Ministry of Economy, Trade and Industry
- Ministry of Land, Infrastructure and Transport



Three-way catalytic muffler

POWER/SOFT MODE SWITCH



Depending on the task, two power levels can be selected: POWER mode, which maximizes power output and SOFT mode for fuel efficiency and low noise levels. Selecting SOFT mode cuts CO₂ emissions by approximately 13% compared to the POWER mode.

* Standard for Electronically Controlled Gasoline Engine Trucks

MITSUBISHI CLASIDIA FORKLIFT

Internal Combustion Pneumatic Tyre 2.0-3.0 ton

Designed to meet the needs of growing businesses. These versatile, durable and reliable forklifts carry out day-to-day goods unloading and loading and movement requirements.

Clasidia's straightforward layout and design allow for more legroom, headroom and visibility in the cab.

CLASIDIA DETAIL

Performance

- 44KW of engine power at your command, powerful engine for all your applications.
- Improved heat balance through unique shape of counterweight. This allows efficient cooling which prevents over heating.
- Excellent basic performance in its class.
- Tight turning radius with a compact chassis.
- Easy and smooth steering with hydraulic power steering.

Comfort

- Uncluttered and logical laid out of cabin floor space.
- Adjustable tilt-steering angle for an ergonomic driving position.
- Soft Landing of forks on ground with minimum noise produced and load protection.
- Full floating powertrain that minimise vibration to cabin.

Safety

- Excellent fork visibility with display panel located on the cowl.
- Lift Lock that locks the lifting/lowering functions when key-off.
- Neutral Safety Start function.

Maintenance

- No complicated electronic components.
- Easy access to engine compartment with removable of side covers.
- Engine hood opens easily without having to adjust the steering column.

FD/FG20-30(H)S



TYPE	MODEL	CAPACITY	LOAD CENTER	MAXIMUM MAST HEIGHT
Diesel	FD20HS	2000kg	500mm	5000mm
	FD25HS	2500kg	500mm	5000mm
	FD30HS	3000kg	500mm	5000mm
Gasoline	FG20S	2000kg	500mm	5000mm
	FG25S	2500kg	500mm	5000mm
	FG30S	3000kg	500mm	5000mm



- Capacity rate is calculated at Mitsubishi manufacture standard mast height, without attachment
- The capacity might be varied due to the mast height or with attachment.

Please contact our sales consultant for more details.

4 WHEEL ELECTRIC COUNTERBALANCED TRUCK

- ✓ IPX4 waterproof design
- ✓ Safety cruise limits truck to a safe speed when travelling on a downslope
- ✓ Enhanced safety with Travel and Hydraulics Operations
- ✓ Open-type mast provides superb visibility
- ✓ Clear display shows complete operating status at-a-glance
- ✓ In-built diagnostic to show fault through display and thus reduce truck downtime

FB10-35(L)CB



TYPE	MODEL	CAPACITY	LOAD CENTER	MAXIMUM MAST HEIGHT
Electric	FB10CB	1000kg	500mm	7000mm
	FB15CB	1500kg	500mm	7000mm
	FB18CB	1750kg	500mm	7000mm
	FB20CB	2000kg	500mm	7000mm
	FB25CB	2500kg	500mm	7000mm
	FB20LCB	2000kg	500mm	7000mm
	FB25LCB	2500kg	500mm	7000mm
	FB30CB	3000kg	500mm	7000mm
	FB35CB	3500kg	500mm	7000mm

FB35-45CZ

TYPE	MODEL	CAPACITY	LOAD CENTER	MAXIMUM MAST HEIGHT
Electric	FB35CZ	3500kg	600mm	5000mm
	FB40CZ	4000kg	600mm	5000mm
	FB45CZ	4500kg	600mm	5000mm



- Capacity rate is calculated at Mitsubishi manufacture standard mast height, without attachment
- The capacity might be varied due to the mast height or with attachment.

Please contact our sales consultant for more details.

ELECTRIC COUNTERBALANCED



The EDiA XL benefits from revolutionary features designed to give operators greater control than ever before. Electric differential lock provides optimum traction, and Four Wheel Steering ensures better grip and precision handling. EDiA XL is also equipped with AutoBoost for extra speed and power when you need it most.

EDiA XL has the power and performance to complete any task and overcome every challenge - making it the best alternative to an IC truck. EDiA XL is even proven to have the most efficient energy consumption in its class. So you keep going for longer, with zero emissions.



POPULAR FEATURE

- Automatic parking brake with hill hold**
 The truck stops automatically when the accelerator is not engaged, preventing rolling on ramps. No need to remember to use a handle or switch.
- Sensitive Drive System (SDS)**
 An intuitive driver-assist system for increased safety. Performance is managed according to steer angle and the velocity of foot and finger controls.
- Intelligent Cornering System**
 The truck senses the angle of a turn and reduces speed early for maximum stability and accurate, positive cornering.
- AutoBoost***
 Acceleration and torque boost functions provide more power when needed, such as on ramps.
- Adaptive Lift Control (ALC)***
 Allows truck to remain stable with fewer movements when lowering loads from high heights.
- Passive Sway Control**
 Minimises mast sway, especially in high lifts above 3m.

- Four Wheel Steering (4WS)**
 Front axle drive motors turn in separate directions for better grip and precise handling. The rear axle steers through a full 100°, with dual drive motors for instant, smooth turning on the spot and no initial "push". This offers excellent manoeuvrability in tight spaces.
- Comfortable cabin**
 The overall noise inside the cabin is just 65dB - that's similar to normal conversation level - providing a quiet and stress-free environment where the operator can focus on the task at hand.
- Dual joysticks**
 Offering simultaneous lift and tilt functions, the ergonomic dual joysticks have good grip, especially when used with gloves.

FB40-55(C)N(H) SERIES



* AutoBoost and ALC are all in-house designed 'patent pending' features.

TYPE	MODEL	CAPACITY	LOAD CENTER	MAXIMUM MAST HEIGHT
Electric	FB40N	4000kg	500mm	7000mm
	FB45N	4500kg	500mm	7000mm
	FB50CN	4990kg	500mm	7000mm
	FB50N	4990kg	500mm	7000mm
	FB50NH	5000kg	600mm	7000mm
	FB55NH	5500kg	600mm	7000mm

3 WHEEL ELECTRIC COUNTERBALANCED TRUCK

- ✓ Choices of ECONOMY or POWER modes to meet different operating needs
- ✓ Intelligent self diagnosis control system reduces time loss on maintenance and fault isolation
- ✓ Water resistant with IPX4 waterproof rating
- ✓ Wet disc brakes system
- ✓ Industry competitive turning radius to operate in space constraint environment
- ✓ Competitive AC technology with powerful travel speed up to 16.5km/hr
- ✓ Variation of different chassis models to operate in different aisle width
- ✓ Lifts up to 7m
- ✓ Superior pitching control system

FB13-20T(B)CB



TYPE	MODEL	CAPACITY	LOAD CENTER	MAXIMUM MAST HEIGHT
Electric	FB13TCB	1300kg	500mm	7000mm
	FB15TCB	1500kg	500mm	7000mm
	FB16TCB	1600kg	500mm	7000mm
	FB18TCB	1800kg	500mm	7000mm
	FB20TCB	2000kg	500mm	7000mm
	FB20TCB	2000kg	500mm	7000mm

- Capacity rate is calculated at Mitsubishi manufacture standard mast height., without attachment
- The capacity might be varied due to the mast height or with attachment.

Please contact our sales consultant for more details.



WAREHOUSE TRUCKS



POWER PALLET TRUCK AND STACKER

Mitsubishi pallet transfer trucks are a popular solution for safe, quick and easy load handling in stores, warehouses and loading docks. With extremely strong, endurance-tested and well-protected construction, they feature fewer wear parts and a low energy consumption.

Designed to power through long shifts, they are easy to operate - even for unexperienced drivers - and are built to perform reliably even on uneven surfaces and in extreme conditions.

PBP16 - 20N3(R)(E)



TYPE	MODEL	CAPACITY	LOAD CENTER
Pedestrian Power Pallet Truck	PBP16N3	1600kg	600mm
	PBP18N3	1800kg	600mm
	PBP20N3	2000kg	600mm
	PBP20N3R	2000kg	600mm
	PBP20N3E	2000/700kg	600mm

PBV/PBF20N3D(R)(S)



TYPE	MODEL	CAPACITY	LOAD CENTER
Pedestrian / stand-on	PBV20N3D	2000 / 1000+1000kg	600mm
Stand-on	PBF20N3DR	2000 / 1000+1000kg	600mm
Stand-on	PBF20N3DS	2000 / 1000+1000kg	600mm

PBV20-25N3



TYPE	MODEL	CAPACITY	LOAD CENTER
Electric	PBV20N3	2000kg	600mm
Electric	PBV25N3	2500kg	600mm

PBF20-25N3(R)(S)



TYPE	MODEL	CAPACITY	LOAD CENTER
Electric	PBF20N3R	2000kg	600mm
Electric	PBF20N3S	2000kg	600mm
Electric	PBF25N3R	2500kg	600mm
Electric	PBF25N3S	2500kg	600mm

• Load capacity may vary, due to application

Please contact our sales consultant for more details.

PBV20PD



TYPE	MODEL	CAPACITY	LOAD CENTER
Electric	PBV20PD	2000kg*	600mm

SBV12-16P(I)(S)



TYPE	MODEL	CAPACITY	LOAD CENTER
Standard Model	SBV12P	1250kg	600mm
	SBV16P	1600kg	600mm
Initial Lift	SBV12P(I)	1250kg	600mm
	SBV16P(I)	1600kg	600mm
Straddle	SBV16P(S)	1600kg	600mm

PWR30/40



TYPE	MODEL	CAPACITY	LOAD CENTER
Electric	PWR30	2700kg	600mm
	PWR40	3600kg	600mm

SBP10-16N3(I)(R)(S)



TYPE	MODEL	CAPACITY	LOAD CENTER	MAXIMUM MAST HEIGHT
Pedestrian	SBP10N3	1000kg	600mm	3300mm
	SBP12N3	1200kg	600mm	5400mm
	SBP14N3	1400kg	600mm	5400mm
	SBP16N3	1600kg	600mm	5400mm
	SBP12N3I	1200kg	600mm	5400mm
	SBP14N3I	1400kg	600mm	5400mm
	SBP16N3I	1600kg	600mm	5400mm
Pedestrian / Stand-on	SBP10N3R	1000kg	600mm	3300mm
	SBP12N3R	1200kg	600mm	5400mm
	SBP14N3R	1400kg	600mm	5400mm
	SBP16N3R	1600kg	600mm	5400mm
	SBP12N3IR	1200kg	600mm	5400mm
	SBP14N3IR	1400kg	600mm	5400mm
	SBP16N3IR	1600kg	600mm	5400mm
Pedestrian	SBP16N3S	1600kg	600mm	5400mm
Pedestrian / Stand-on	SBP16N3SR	1600kg	600mm	5400mm

• Capacity rate is calculated at Mitsubishi manufacture standard mast height, without attachment
 • The capacity might be varied due to the mast height or with attachment.

Please contact our sales consultant for more details.

RIDE-ON, POWER PALLET TRUCK

PBR20N2-PBR30N2

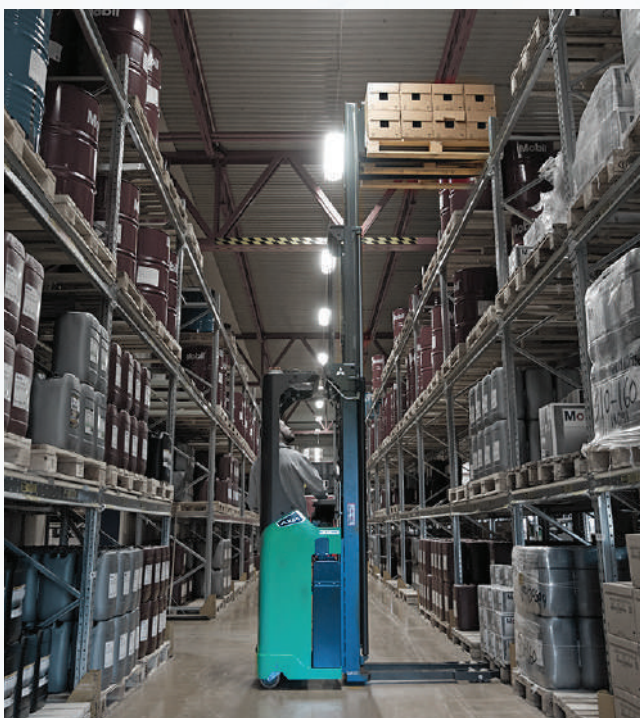


TYPE	MODEL	CAPACITY	LOAD CENTER
Electric	PBR20N2 (Stand-On)	2000kg	600mm
	PBR30N2 (Stand-On)	3000kg	600mm

SBR12N2-SBR20N2I



TYPE	MODEL	CAPACITY	LOAD CENTER
Standard Model	SBR12N2 (Stand-On)	1250kg	600mm
	SBR16N2 (Stand-On)	1600kg	600mm
	SBR20N2 (Stand-On)	2000kg	600mm
Initial Lift	SBR12N2I (Stand-On)	1250kg	600mm
	SBR16N2I (Stand-On)	1600kg	600mm
	SBR20N2I (Stand-On)	2000kg	600mm



• Capacity rate is calculated at Mitsubishi manufacture standard mast height., without attachment | Please contact our sales consultant for more details.
 • The capacity might be varied due to the mast height or with attachment.

REACH TRUCK

- Wide angle view at overhead guard and mast for greater visibility.
- Independent presence pedal and brake pedal to keep operator's legs within compartment.
- Shock reduction feature upon lowering down forks.
- AC powered truck with motors enables acceleration, brings efficiency.
- Intelligent suspension system provides better stability during movement.
- LCD Display for better visibility.
- Anti-slip feature for better stability and safety.



RBS10-30(L)CB1

TYPE	MODEL	CAPACITY	LOAD CENTER	MAXIMUM MAST HEIGHT
Electric	RBS10NCB1	1000kg	500mm	5000mm
	RBS12NCB1	1200kg	500mm	5000mm
	RBS12CB1	1200kg	500mm	6000mm
	RBS12LCB1	1200kg	500mm	6000mm
	RBS15CB1	1500kg	500mm	7500mm
	RBS18CB1	1800kg	500mm	8000mm
	RBS15LCB1	1500kg	500mm	7500mm
	RBS18LCB1	1800kg	500mm	8000mm



TYPE	MODEL	CAPACITY	LOAD CENTER	MAXIMUM MAST HEIGHT
Electric	RBS20CB1	2000kg	500mm	8000mm
	RBS25CB1	2500kg	500mm	8000mm
	RBS30CB1	3000kg	500mm	7000mm
	RBS20LCB1	2000kg	500mm	8000mm
	RBS25LCB1	2500kg	500mm	8000mm
	RBS30LCB1	3000kg	500mm	7000mm

• Capacity rate is calculated at Mitsubishi manufacture standard mast height., without attachment
 • The capacity might be varied due to the mast height or with attachment. **Please contact our sales consultant for more details.**

SIT ON REACH TRUCK (SUPERIOR MAST TYPE)

Reaching new heights of performance and business productivity

A warehouse can only perform as effectively as its trucks and their drivers. That's why every Mitsubishi reach truck is specially engineered to take any operator's performance to the next level.

With class-leading travel speeds of up to 14km/h, SENSiA reach trucks are easily tailored to your needs with a choice of two performance modes. While experienced drivers will fully exploit the high-performance capability of the Professional (PRO) mode, new or inexperienced warehouse staff will respond to the Ecologic (ECO) mode which has been configured to work naturally and economically in any environment. For more specific needs, the truck's settings can be customised by a service engineer.



Generous on operator space and comfort, SENSiA drives productivity higher through its futuristic fingertip control system the most sensitive and accurate in the world. With its progressive, modulated fingertip response curves, it delivers a 'feel' and an accuracy that put drivers in total control. Together with the ergonomic armrest, SENSiA ensures operators stay focused, safe and productive – even through the longest shifts.

RB14-25N2



TYPE	MODEL	CAPACITY	LOAD CENTER	MAXIMUM MAST HEIGHT
Electric	RB14N2L	1400kg	600mm	7500mm
	RB14N2S	1400kg	600mm	7500mm
	RB14N2HS	1400kg	600mm	9000mm
	RB16N2L	1600kg	600mm	7500mm
	RB16N2S	1600kg	600mm	7500mm
	RB16N2HS	1600kg	600mm	11500mm
	RB16N2	1600kg	600mm	7500mm
	RB16N2C	1600kg	600mm	7500mm
	RB16N2HS	1600kg	600mm	9000mm
	RB16N2HC	1600kg	600mm	9000mm
	RB20N2H	2000kg	600mm	11500mm
	RB20N2X	2000kg	600mm	13000mm
	RB25N2X	2500kg	600mm	11500mm

- Capacity rate is calculated at Mitsubishi manufacture standard mast height, without attachment
- The capacity might be varied due to the mast height or with attachment.

Please contact our sales consultant for more details.

SIT ON REACH TRUCK (STANDARD MAST TYPE)

Electric Sit On Reach Truck 1.4-2.0 ton

The RBF-CA Series Reach Trucks are one of the most versatile and reliable truck series in the industry. Its powerful drive system and compact structure ensure that you will experience outstanding performance whether you are lifting, transporting or manoeuvring goods in the warehouse environment.



www.logisnext.com

RBF14-20CA



TYPE	MODEL	CAPACITY	LOAD CENTER	MAXIMUM MAST HEIGHT
Electric	RBF14CA	1400kg	600mm	8000mm
	RBF16CA	1600kg	600mm	9000mm
	RBF20CA	2000kg	600mm	10000mm

- Capacity rate is calculated at Mitsubishi manufacture standard mast height, without attachment
- The capacity might be varied due to the mast height or with attachment.

Please contact our sales consultant for more details.

SIT ON MULTIWAY REACH TRUCK (SUPERIOR MAST TYPE)

The Mitsubishi SENSiA EX multi-way reach truck range is ideal for precise and intuitive handling of wide and unusual loads of up to 2500 kg - and lifting up to 10 metres - in narrow aisles and on long shifts.

Six multi-directional travel modes, all-wheel steering and braking and powerful AC traction combine to deliver exceptionally agile, high-intensity performance. Its wide forks make long handling exact and effortless.

Comfortable and spacious, the award-winning SENSiA cabin, SDS and operator controls provides excellent all-round visibility and minimises operator fatigue.



www.mitforklift.com.sg

TOP FEATURES

- Six multiway driving modes, instantly selected by keypad - reach truck, lateral, parallel, auto-transition, rotational and agile cornering.
- Mitsubishi SDS (Sensitive Drive System) provides intuitive driver-assist with graduated performance management according to steer angle, foot and finger actuator velocity - significantly contributing to safety.
- AC power on all motors delivers smooth performance, high torque and precise control - through the longest shifts.
- Choice of 2000 kg and 2500 kg capacities for optimum application configuration.
- Smooth mast handling system on lift and reach for steady, predictable and precise handling.
- Wide fork positioner with up to 2200 mm spread and fork tilt for handling both long loads and standard pallets.
- Lift heights up to 10 metres for higher handling.

RBM20-25N2



TYPE	MODEL	CAPACITY	LOAD CENTER	MAXIMUM MAST HEIGHT
Electric	RBM20N2	2000kg	600mm	9500mm
	RBM25N2	2500kg	600mm	10000mm

- Capacity rate is calculated at Mitsubishi manufacture standard mast height., without attachment
- The capacity might be varied due to the mast height or with attachment.

Please contact our sales consultant for more details.

ORDER PICKER

Empower your operator transform your operations. Despite its ultracompact size, our VELiA ES range of low level order pickers is packed with smart features that will have your operations running more efficiently, productively, reliably and safer.

Its energy efficiency is top of its class. It's 14% more efficient than its closest competitor meaning you can work as leanly as possible. And its market-leading ergonomics mean your operators will be as comfortable (and productive) as possible – even through the longest shifts.

OPB12-25N2(F)(P)



TYPE	MODEL	CAPACITY	LOAD CENTER	FORK HEIGHT	PLATFORM HEIGHT
Battery	OPB20N2	2000kg	600mm	135mm	N/A
	OPB20N2P	2000kg	600mm	135mm	1000mm
	OPB20N2XP	2000kg	1200mm	765mm	1000mm
	OPB25N2	2500kg	600mm	135mm	N/A
	OPB25N2P	2500kg	600mm	135mm	1000mm
	OPB12N2F	1200kg	600mm	765/1115mm	N/A
	OPB12N2FP	1200kg	600mm	765/1115mm	1000mm

OPB20N2X(P)



TYPE	MODEL	CAPACITY	LOAD CENTER	FORK HEIGHT	PLATFORM HEIGHT
Battery	OPB20N2X	2000kg	1200mm	765mm	N/A

OPBL10P



TYPE	MODEL	CAPACITY	LOAD CENTER	FORK HEIGHT	PLATFORM HEIGHT
Electric	OPBL10P	1000kg	600mm	1850/2450mm	1200/1800mm

OPBM10P, OPBH12PH



TYPE	MODEL	CAPACITY	LOAD CENTER	FORK HEIGHT	PLATFORM HEIGHT
Electric	OPBM10P	1000kg	600mm	9025mm	8250mm
	OPBH12PH	1250kg	600mm	11275mm	10500mm

EOP15N3



TYPE	MODEL	CAPACITY	LOAD CENTER	FORK HEIGHT	PLATFORM HEIGHT
Electric	EOP15N3	1360kg	600mm	6775mm	6000mm

- Capacity rate is calculated at Mitsubishi manufacture standard mast height., without attachment
- The capacity might be varied due to the mast height or with attachment.

TOW TRUCK

Versatile pulling power and class-leading ergonomics. With a wealth of ergonomic and safety features, the TBR30-50N2 tow truck blends operator comfort, precision control and sheer strength to deliver efficient and reliable performance. Among many innovations is the model's userfriendly Maxius steering wheel and controls, which are combined with progressive steering, automatic speed reduction when cornering and automatic drive wheel centring to ensure total confidence when manoeuvring at all speeds.

Designed for indoor use, primarily within the automotive sector, the versatile TBR30-50N2 promises exceptional productivity. Its spacious, uncluttered operator compartment gives easy walkthrough access, while its large, non-slip working platform acts as a 'deadman' pedal – allowing movement only when an operator stands on it. Speed and other parameters can be programmed to suit the application and the operator. Maximum drive speed is 12 km/h when the operator is riding but a safe limit of 2.5km/h is automatically set when the truck is switched to walk-beside mode.



Frame and body

- Low centre of gravity adds further stability, for safer operation.
- Robust construction offers exceptional durability in all working conditions.

Drive

- Powerful AC drive means high drive speed (up to 12km/h) and acceleration – even when loaded – plus smooth, quiet, controlled operation, extended shift length and lower maintenance requirements.
- Suspended drive unit ensures a comfortable ride.

Steering system

- Advanced electric steering allows precise control at all speeds, with automatic speed reduction in curves and automatic drive wheel centring.
- Small turning circle together with responsive steering and compact chassis results in exceptional manoeuvrability.

Brakes

- Regenerative braking gives effective control, with no brake wear, and extends shift life.
- Automatic speed reduction at corners improves safety.

TBR30-50N2



TYPE	MODEL	CAPACITY	RATED DRAWBAR PULL
Electric	TBR30N2	3000kg	600mm
	TBR50N2	5000kg	1000mm

• Load capacity may vary, due to application

Please contact our sales consultant for more details.

PANTOGRAPH REACH TRUCK

ADVANCED TECHNOLOGY SAVES ENERGY AND TIME FOR GREATER PRODUCTIVITY.

The ESR series delivers the efficiency and performance that your operation demands.

Exceptional Performance, Exceptional Value: Mitsubishi Forklift Trucks developed the ESR series of reach trucks to deliver superior performance – at an exceptional value. Featuring advanced AC technology, this series is designed to reach new heights quickly and efficiently for greater productivity, shift after shift.



ESR20-23N2, EDR18N2

TYPE	MODEL	CAPACITY	LOAD CENTER	MAXIMUM MAST HEIGHT
Electric (Single Reach)	ESR20N2	1810kg	600mm	9296mm
	ESR23N2	2040kg	600mm	11430mm
	EDR18N2	1580kg	600mm	11430mm

VERY NARROW AISLE TRUCK

A true VNA specialist, the ELEViA series is optimised for easy order picking and pallet handling in narrow aisle spaces.

With intuitive controls, an ergonomic, spacious cabin and excellent visibility, ELEViA is an operator's dream. Modular design and engineering make it highly configurable.

Each model in the range is fully optimised for a specific type of application, making for a comprehensive and versatile selection of trucks. The 1.1-1.3-tonne models are available with 48v or 80v electrical systems, while larger models are 80v only.



VNT11-20(XL)

TYPE	MODEL	CAPACITY	LOAD CENTER	MAXIMUM MAST HEIGHT
Electric	VNT11	1100kg	600mm	7320mm
	VNT12	1200kg	600mm	8320mm
	VNT13	1300kg	600mm	8320mm
	VNT14	1350kg	600mm	12320mm
	VNT15	1500kg	600mm	12302mm
	VNT15XL	1500kg	600mm	14320mm
	VNT20	2000kg	600mm	11820mm

- Capacity rate is calculated at Mitsubishi manufacture standard mast height, without attachment
- The capacity might be varied due to the mast height or with attachment.

Please contact our sales consultant for more details.



WAREHOUSE TRUCKS

Mlift, we position ourselves as the leading material handling specialists, take pride and put in relentless effort to understand each industry challenges and deliver unique LIFT SOLUTIONS to optimize productivity for business.

We uphold our core belief in developing trucks that possess high-level MOBILITY to accomplish high demanding tasks with an exceptional touch of practical and realistic design to suit most application requirements.

POWER PALLET TRUCK



PBP12E



PBP15E



PBP15E2



PBP18E



MODEL	TYPE	CAPACITY (KG)	LOAD CENTER (MM)	BATTERY	MOTOR
PBP12E	Electric Pallet Truck	1200	600	24V(Li-Ion)	DC Drive
PBP15E	Electric Pallet Truck	1500	600	24V(2x12V)	DC Drive
PBP15E2	Electric Pallet Truck	1500	600	24V(2x12V)	DC Drive
PBP18E	Electric Pallet Truck	1800	600	24V(2x12V)	AC Drive

• Load capacity may vary, due to application

Please contact our sales consultant for more details.

PBP20EA-PBP25EA



MODEL	TYPE	CAPACITY (KG)	LOAD CENTER (MM)	BATTERY	MOTOR
PBP20EA	Electric Pallet Truck	2000	600	24V(Wet cells)	AC Drive
PBP25EA	Electric Pallet Truck	2500	600	24V(Wet cells)	AC Drive

PBV20EAL



MODEL	TYPE	CAPACITY (KG)	LOAD CENTER (MM)	BATTERY	MOTOR
PBV20EAL	Electric power pallet	2000	600	24V Li-ion	AC Drive

• Load capacity may vary, due to application

Please contact our sales consultant for more details.

POWER PALLET STACKER

SBP12E



MODEL	TYPE	CAPACITY (KG)	LOAD CENTER (MM)	BATTERY	MOTOR	MAXIMUM MAST HEIGHT (MM)
SBP12E	Electric Power Stacker Truck	1200	600	24V(2x12V AGM)	DC (Lift/Drive/Pump)	3600



SBP12ES-SBP18EAS



MODEL	TYPE	CAPACITY (KG)	LOAD CENTER (MM)	BATTERY	MOTOR	MAXIMUM MAST HEIGHT (MM)
SBP12ES	Electric Power Stacker Truck	1200	600	24V(2x12V AGM)	DC (Lift/Drive/Pump)	3600
SBP12EAS	Electric Power Stacker Truck	1200	600	24V (Lead acid)	AC Drive only	4500
SBP14EAS	Electric Power Stacker Truck	1400	600	24V (Lead acid)	AC Drive only	5000
SBP18EAS	Electric Power Stacker Truck	1800	600	24V (Lead acid)	AC Drive only	5000

• Capacity rate is calculated at Mitsubishi manufacture standard mast height., without attachment
 • The capacity might be varied due to the mast height or with attachment. **Please contact our sales consultant for more details.**

SBXP15EA



MODEL	TYPE	CAPACITY (KG)	LOAD CENTER (MM)	BATTERY	MOTOR	MAXIMUM MAST HEIGHT (MM)
SBXP15EA	Electric Power Stacker Truck	1500	600	24V (Lead acid)	AC Drive only	5500



SBP16EA



MODEL	TYPE	CAPACITY (KG)	LOAD CENTER (MM)	BATTERY	MOTOR	MAXIMUM MAST HEIGHT (MM)
SBP16EA	Electric Power Stacker Truck	1600	600	24V (Lead acid)	AC Drive only	5500

• Capacity rate is calculated at Mitsubishi manufacture standard mast height., without attachment
 • The capacity might be varied due to the mast height or with attachment. **Please contact our sales consultant for more details.**

ELECTRIC PALLET TRUCK

PBPA15EL



MODEL	TYPE	CAPACITY (KG)	LOAD CENTER (MM)	BATTERY	MOTOR
PBPA15EL	Electric Pallet Truck	1500	600	24/30 V/Ah	DC Drive

PBPB15EL



MODEL	TYPE	CAPACITY (KG)	LOAD CENTER (MM)	BATTERY	MOTOR
PBPB15EL	Electric Pallet Truck	1500	600	24/20 V/Ah	DC Drive

TOW TRUCK



TBR30EA-TBR45EA



MODEL	TYPE	CAPACITY (KG)	RATED DRAWBAR PULL (MM)	BATTERY	MOTOR
TBR30EA	Electric Tractor	3000	600	24V	AC Drive
TBR45EA	Electric Tractor	4500	900	24V	AC Drive

TBS30EA-TBS60EA



MODEL	TYPE	CAPACITY (KG)	RATED DRAWBAR PULL (MM)	BATTERY	MOTOR
TBS30EA	Electric Tractor	3000	750	48V	AC Drive
TBS60EA	Electric Tractor	6000	1200	48V	AC Drive

• Load capacity may vary, due to application

Please contact our sales consultant for more details.

ORDER PICKER



MODEL	TYPE	RATED CAPACITY ON FRONT PLATFORM (KG)	RATED CAPACITY ON STANDING PLATFORM (KG)	BATTERY	MOTOR	MAXIMUM PLATFORM HEIGHT (MM)
OPB3E	Medium Level Order Picker	90	136	24V	DC Drive	3000mm

OPB5E



MODEL	TYPE	RATED CAPACITY ON FRONT PLATFORM (KG)	RATED CAPACITY ON STANDING PLATFORM (KG)	BATTERY	MOTOR	MAXIMUM PLATFORM HEIGHT (MM)
OPB5E	Medium Level Order Picker	227	136	24V	AC Drive	3200(min)/4880(Max)

• Load capacity may vary, due to application

Please contact our sales consultant for more details.

LITHIUM-ION BATTERIES



AVAILABLE MODELS FOR LITHIUM-ION BATTERY

FB10-25CB | FB13-20TCB | RBS10-25CB1

LITHIUM-ION BATTERIES

The dynamics of the logistics business are changing the requirements placed on warehouse equipment and forklifts. The Li-ion technology has proven its worth in everyday use and is a good alternative energy source for a multishift warehouse.



Extremely Safe:

- Fully sealed battery means not spillage.
- No gassing during charging.
- No battery swapping related accidents.

Long Battery Life:

- Expected to last up to around 10 years and charge cycles of about 4000 cycles.

Zero Emission and Gassing:

- Batteries are fully sealed and no gases are emitted during charging.

Zero Maintenance:

- No regular checking, cleaning and water top up of battery.

Cost Saving:

- Save more through reduced maintenance and accidents.

Charge whenever needed:

- Charge whenever there are opportunities like tea breaks or lunch. breaks without the fear of reduced battery life span.

Speedy Charging:

- Extremely fast charging of about 2~3 hours depending on the battery



COMPARISON BETWEEN LI-ION AND LEAD ACID BATTERY

Type	Lithium Iron Phosphate (LiFePO4)	Lead Acid
Life span & Cycle	10 years, 4000 charge cycles	4 years, 1200 charge cycles
Operation Temperature	-20~60 C	-5~45 C
Achievable Capacity	70-80%	40-50%
Power Density	125W/kg	40W/kg
Battery Weight	33% of lead acid	100% of lead acid
Regular Maintenance	No	Yes
Charging Time	Fast, around 2 hours	Slow, around 8 hours

FORKLIFT ATTACHMENT



FORKLIFT TRUCK FOR THE PAPER INDUSTRY

Capable of handling paper rolls effectively. Capable of handling small-diameter paper roll with a movable short arm. Improved contact pads provides better grips on rolls. Capable of handling two rolls of paper with different diameters (Special Request Option).

- Attachment installed: Roll Clamp
- Mast installed: Heavy Duty Mast
- Recommended option: Hydraulic Oil Cooler



FORKLIFT TRUCK FOR THE RECYCLED PAPER INDUSTRY

Excellent insert clamp-arm to grip paper bales safely and securely. Wide view between clamp cylinders.

- Attachment installed: Bale Clamp
- Recommended option: Hydraulic Oil Cooler / Semi-under Net Kit



FORKLIFT TRUCK FOR THE TIMBER INDUSTRY

This forklift truck has a hinged fork and back rest to scoop and carry logs and sawn timber.

- Standard: Panoramic Hinged Fork (fixed type back rest)
- Recommended option: Air Intake Pre-Cleaner / Front Windshield / Dust Proof Net for Radiator



FORKLIFT TRUCK FOR THE QUARRY INDUSTRY

This forklift truck has a hinged fork and fixed back rest that can move and carry stone without damage. It provides excellent handling and grip, even in bad road conditions.

- Standard: Panoramic Hinged Fork (fixed back rest)
- Recommended option: Air Intake Pre-Cleaner / Front Windshield / Dust Proof Net for Radiator

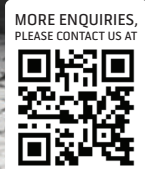


FORKLIFT TRUCK FOR THE MARINE / PORT INDUSTRY

This forklift truck is designed to work in confined spaces such as inside vessels or containers. The three-stage full free mast has a wide front view, and it can be used for high shelves loading - making full use of cargo space.

- Standard: Wide view Three-stage Full Free Mast
- Recommended options: Diesel Particulate Filter / Front Windshield

Tough reliable
and built to work
as hard as you do





MOBILE ELEVATING WORK PLATFORM



SOLUTION SERVICE

The Access Safety Equipment Solution (ASE) Program of UMWS provides the following facilities for our customers.

- Sale New & Used Equipment
- Service Contract and Spare Parts Programs for Purchased Products
- Repairing, Maintaining and Providing Spare Parts
- Operation Training
- Technical Training

ACCESS SAFETY EQUIPMENT

UMWS provides excellent value over its life cycle – value that is enhanced by our attention to maintenance, service, parts, training, machine reliability, and machine versatility.



ELECTRIC & HYBRID BOOM LIFTS

Our line of electric and hybrid boom lifts are environmentally friendly, energy efficient and help keep productivity high. From job start to completion, JLG has an electric boom lift to meet your needs and keep your job green.

E300AJP-EC520AJ



TYPE	MODEL	MAX PLATFORM HEIGHT (M)	MAX PLATFORM CAPACITY (KG)
Articulating Boom Lifts	E300AJP	8.96	227
	E450AJ	13.72	227
	EC450AJ	13.72	250
	EC520AJ	16.00	250

EC600SJ-EC600SJP



TYPE	MODEL	MAX PLATFORM HEIGHT (M)	MAX PLATFORM CAPACITY (KG)
Electric & Hybrid Boom Lifts	EC600SJ	18.36	227
	EC600SJP	18.39	227

H340AJ



TYPE	MODEL	MAX PLATFORM HEIGHT (M)	MAX PLATFORM CAPACITY (KG)
Articulating Boom Lifts	H340AJ	10.28	227

H800AJ



TYPE	MODEL	MAX PLATFORM HEIGHT (M)	MAX PLATFORM CAPACITY (KG)
Articulating Boom Lifts	H800AJ	24.38	227



TELESCOPIC BOOM LIFTS

When you need to work around different angles on crowded job sites, it's important to have the right piece of equipment to get you straight to the source. JLG® engine powered telescopic boom lifts are ideal for work that requires extended horizontal and vertical outreach. Our telescopic lifts take you right where you need to work while providing you with the height and capacity you need.

400S-460SJ



TYPE	MODEL	MAX PLATFORM HEIGHT (M)	MAX PLATFORM CAPACITY (KG)
Telescopic Boom Lifts	400S	12.19	272/454
	460SJ	14.05	272

600S-660SJ



TYPE	MODEL	MAX PLATFORM HEIGHT (M)	MAX PLATFORM CAPACITY (KG)
Telescopic Boom Lifts	600S	18.18	272/454
	660SJ	20.02	249/340

800S-860SJ



TYPE	MODEL	MAX PLATFORM HEIGHT (M)	MAX PLATFORM CAPACITY (KG)
Telescopic Boom Lifts	800S	24.38	227/454
	860SJ	26.21	227/340

1100SJ



TYPE	MODEL	MAX PLATFORM HEIGHT (M)	MAX PLATFORM CAPACITY (KG)
Telescopic Boom Lifts	1100SJ	33.50	250

1200SJP-1850SJ



TYPE	MODEL	MAX PLATFORM HEIGHT (M)	MAX PLATFORM CAPACITY (KG)
Ultra Series	1200SJP	36.58	227/454
	1350SJP	41.15	227/454
	1500SJ	45.70	227/454
	1850SJ	56.56	227/454

400SC-660SJC



TYPE	MODEL	MAX PLATFORM HEIGHT (M)	MAX PLATFORM CAPACITY (KG)
Straight - Crawler	400SC	12.05	272/454
	460SJC	13.88	272
	660SJC	19.99	249/340

340AJ



TYPE	MODEL	MAX PLATFORM HEIGHT (M)	MAX PLATFORM CAPACITY (KG)
Articulating	340AJ	10.33	227

450AJ



TYPE	MODEL	MAX PLATFORM HEIGHT (M)	MAX PLATFORM CAPACITY (KG)
Articulating	450AJ	13.72	250

520AJ



TYPE	MODEL	MAX PLATFORM HEIGHT (M)	MAX PLATFORM CAPACITY (KG)
Articulating	520AJ	16.00	250

600AJ



TYPE	MODEL	MAX PLATFORM HEIGHT (M)	MAX PLATFORM CAPACITY (KG)
Articulating	600AJ	18.47	227

800AJ



TYPE	MODEL	MAX PLATFORM HEIGHT (M)	MAX PLATFORM CAPACITY (KG)
Articulating	800AJ	24.38	227/454



1250AJP-1500AJP



TYPE	MODEL	MAX PLATFORM HEIGHT (M)	MAX PLATFORM CAPACITY (KG)
Articulating	1250AJP	38.10	227/454
	1500AJP	45.72	272/454

400SJ HC3



TYPE	MODEL	MAX PLATFORM HEIGHT (M)	MAX PLATFORM CAPACITY (KG)
Hi Capacity	400S HC3	12.19	300/340/454
	450AJ HC3	13.72	300/340/454
	460SJ HC3	14.05	300/340/454

660S HC3-660SJ HC3



TYPE	MODEL	MAX PLATFORM HEIGHT (M)	MAX PLATFORM CAPACITY (KG)
Hi Capacity	600S HC3	18.18	300/340/454
	660SJ HC3	20.02	300/340/454

800S HC3-860SJ HC3



TYPE	MODEL	MAX PLATFORM HEIGHT (M)	MAX PLATFORM CAPACITY (KG)
Hi Capacity	800S HC3	24.38	227/340/454
	860SJ HC3	26.21	227/340/454



TOUCAN® MAST BOOM LIFTS

With the JLG Toucan® vertical mast lift, you can meet your overhead challenges head-on. Work up, over and around assembly lines, shelving, ductwork or partitions more easily and without interferences. These mast boom lifts feature thick rubber non-marking tires, clean and efficient electric power and 25% gradeability.

HIGHER PERFORMANCE IS WITHIN REACH.

JLG helps you rise to the challenge of narrow operating spaces with the Toucan® Series of compact vertical mast lifts. The JLG Toucan Series provides enhanced accessibility in many situations, with greater vertical and horizontal reach to operate up, around and over obstacles in constricted indoor and outdoor spaces. This makes the Toucan ideal for today's industrial, maintenance, retail and food manufacturing segments.

KEY FEATURES

Boost Productivity

The Toucan has capacity for two workers and supplies plus industry-leading duty cycles to keep you on the job longer. With the mast lowered and the jib retracted, these compact machines will fit through doorways, between heavy machinery and all around congested work areas. So even when space is limited, your productivity isn't.

Indoor/Outdoor Versatility

With thick rubber non-marking tires for extra cushioning, clean and efficient electric power and 25% gradeability, Toucan Series mast booms can boost your productivity on improved surfaces indoors and outdoors.

Improved Positioning Capabilities

With up to 7.12 m of up and over height and 6.05 m horizontal reach, proportional controls and a 345-degree rotating mast, the Toucan mast booms make it easier to get close to your work.



TOUCAN T8E-T12E PLUS



TYPE	MODEL	MAX PLATFORM HEIGHT (M)	MAX PLATFORM CAPACITY (KG)
Toucan Series	T8E	6.15	200
	T10E	8.10	200
	T12E	9.83	200
	T12E Plus	10.65	200



COMPACT CRAWLER BOOM LIFTS

HIGHER PERFORMANCE IS WITHIN REACH.

Compact Crawler Boom lifts are available in Seven models with working heights ranging from 13.30 m to 32.48 m. Whether you're working indoors or outside, the Compact Crawler Boom has your job covered. With enhanced maneuverability and better access, you've got the ability to go more places thanks to its low profile, non-marking tracks and compact dimensions.

KEY FEATURES

Compact and Highly Maneuverable

JLG® Compact Crawlers feature a tracked wheel carriage that climbs steps and a narrow chassis for access through gates, yards and doorways. And their compact dimensions and low weight enable easier transport.

Clean, Quiet Operation

Each JLG® Compact Crawler is fitted with a 220V electrical motor as standard. (X33JP: 380V) An optional market-leading Lithium-ion battery power system for cleaner, greener operation makes these machines environmentally friendly. An ideal solution when working indoors, as no noise or emissions is created.

Operator Convenience

JLG® Compact Crawlers are equipped with a control that can be removed from the platform, enabling the operator to remotely operate the machine. Load sensing underneath the platform will automatically restrict the work envelope and cut-out all functions. Models also feature auto-stabilization-with one push of a button the machine automatically sets and levels.



X13JP-X33JP



TYPE	MODEL	MAX PLATFORM HEIGHT (M)	MAX PLATFORM CAPACITY (KG)
Compact Crawler	X13JP	11.3	230
	X15JP	13.40	230
	X17JP	14.96	230
	X20JP	18.05	230
	X23J	21.10	120/200
	X26JP	23.70	230
	X33JP	30.48	230



SCISSOR LIFTS ELECTRIC POWERED AND ENGINE POWERED

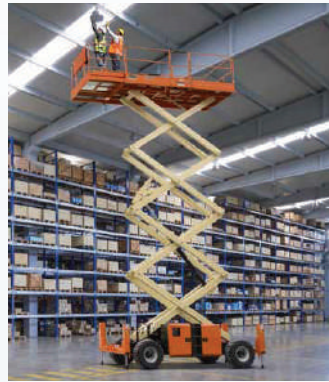
JLG® scissor lifts deliver long lasting performance for a more productive day. Electric scissor lifts enhance your productivity with less recharging and more uptime. These machines are designed so you have fewer scheduled services, a quieter work area and zero emissions.

JLG® engine powered scissor lifts are designed for applications that require more workspace and more lifting capacity. These rough terrain models make it easier to maneuver through the roughest job sites.

Scissor lifts are perfect for a wide variety of applications.



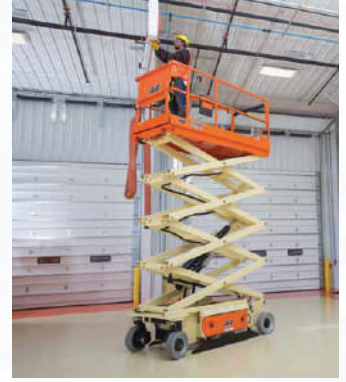
AVIATION



INTERIOR CONSTRUCTION



EXTERIOR CONSTRUCTION



FACILITY MAINTENANCE

ES1330L – ES3246



TYPE	MODEL	MAX PLATFORM HEIGHT (M)	MAX PLATFORM CAPACITY (KG)
Electric Scissor Electric Drive	ES1330L	3.80	227
	ES1530L	4.50	227
	ES1932i	5.80	230
	ES1932	5.80	230
	ES2632	7.77	230/125
	ES3246	9.75	320/230
	ES4046	12	350
	ES1530LC	5.5	204

RT SERIES



TYPE	MODEL	MAX PLATFORM HEIGHT (M)	MAX PLATFORM CAPACITY (KG)
Diesel/Dual Fuel Rough Terrain	RT2669	7.98	680 (Single Ext)
	RT3369	9.96	454 (Single Ext)
	RT4069	12.20	362 (Single Ext)
	RT4769	14.33	362 (Single Ext)

R SERIES



TYPE	MODEL	MAX PLATFORM HEIGHT (M)	MAX PLATFORM CAPACITY (KG)
Electric Scissor	R1532i	4.50	275
	R1932i	5.80	230
	R1932	5.80	230
	R2632	7.77/6.40	230/125
	R3246	9.75	320/230
	R4045	12/8.80	350/250

LRT SERIES



TYPE	MODEL	MAX PLATFORM HEIGHT (M)	MAX PLATFORM CAPACITY (KG)
Diesel/Dual Fuel Large Rough Terrain	RT3394	10.06	1,020 (Single Ext)
	RT4394	13.11	680 (Single Ext)
	RT5394	16.20	680 (Single Ext)

ERT SERIES



TYPE	MODEL	MAX PLATFORM HEIGHT (M)	MAX PLATFORM CAPACITY (KG)
Electric Rough Terrain	ERT2669	7.98	680 (Single Ext)
	ERT3369	9.96	454
	ERT4069	12.20	362
	ERT4769	14.33	362

VERTICAL LIFTS

When your maintenance or repair work requires you to reach overhead in tight spaces, you need vertical lift solutions that deliver full access with the productivity to finish those pressing tasks. Our range of driveable and push-around vertical lifts are an efficient and productive way to tackle up and over work. They're also a safer, more efficient alternative to ladders, giving you a confidence boost while completing the job.

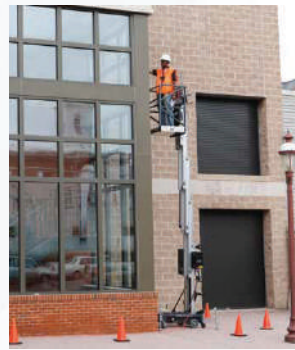
Vertical lifts are perfect for a wide variety of applications.



PUBLIC BUILDINGS



SCHOOLS



EXTERIOR BUILDING MAINTENANCE



INTERIOR CONSTRUCTION

25AM AC-38AM DC



TYPE	MODEL	MAX PLATFORM HEIGHT (M)	MAX PLATFORM CAPACITY (KG)
Vertical Push Around	25AM AC	9.45	160
	25AM DC	9.45	160
	30AM AC	10.88	136
	30AM DC	10.88	136
	38AM AC	13.40	136
	38AM DC	13.40	136

E18MSP



E18MCL



TYPE	MODEL	MAX PLATFORM HEIGHT (M)	MAX PLATFORM CAPACITY (KG)
Driveable Vertical Lift	E18MSP	5.5	204
	E18MCL	5.5	181

PECOLIFT



TYPE	MODEL	MAX PLATFORM HEIGHT (M)	MAX PLATFORM CAPACITY (KG)
Low-Level Access	PecoLift	1.50	150

ECOLIFT



TYPE	MODEL	MAX PLATFORM HEIGHT (M)	MAX PLATFORM CAPACITY (KG)
Low-Level Access	EcoLift	2.20	150

NANO SP



TYPE	MODEL	MAX PLATFORM HEIGHT (M)	MAX PLATFORM CAPACITY (KG)
Low-Level Access	Nano SP Zero	2.50	200
	Nano SP	2.50	200
	Nano SP Plus	2.50	200

POWER TOWER NANO



TYPE	MODEL	MAX PLATFORM HEIGHT (M)	MAX PLATFORM CAPACITY (KG)
Low-Level Access	Power Tower Nano	2.50	200
	Power Tower	3.10	250



High reach
Confident control

MORE ENQUIRIES,
PLEASE CONTACT US AT





AUTOMOTIVE GARAGE SOLUTION

STEER TOWARDS THE BEST

Understanding the automotive and garage business extremely well has allowed us to become the one-stop automotive equipment resource for large and small shops. We carry an extensive product line from the finest manufacturers, who have a reputation for quality and value from all over the world.

Besides offering the best tire pressure sensor, wheel balancer, tire changer, brake lath, air compressors, battery charger and other auto shop tools, we offer a professional and friendly service. We use our experience and knowledge to steer customers toward the best product for their needs.

We can help you to improve your bottom line and get a good return on your investment.



BRAKE LATHE

Durable and cost-saving, our popular models, are available to meet every level of lathing requirement for trucks. All parts are offered together with efficient maintenance services.



WHEEL BALANCER



TYRE CHANGER



BATTERY TESTER



WHEELED CHARGER

WHEELED CHARGER

To charge the first cycle of battery is vitally important. Our automatic charger designed by the quality technology can control heat to ensure effectiveness of the battery element sheet. A variety of high performance products chosen for our customers include battery chargers, battery starters for all types of battery and battery testers.



LIFTING EQUIPMENT



TRUCK WHEEL BALANCER



TRUCK TYRE CHANGER

Our piston and screw air compressors with the ISO 14000 standard on quality assurance and environmental management reduce noise pollution, heat and energy consumption. They are good options for new business operators looking for equipment to pass their test criteria or ISO certification audits and to save more on electricity bills. We sell air compressors of all sizes you may need as well as other models for general usage by business operators and small industries. Their quality however is referred to those used in large-scale industrial plants.



AIR COMPRESSOR



AIR COMPRESSOR



COMBINATION BRAKE LATHES

JBC401BL



JBC201BL



Heavy, Innovative, Fast

- Allows for a quick changeover from disc to drum tools in seconds
- Constructed from industrial strength material
- Design to handle all brake resurfacing needs
- Optional workbench and tool board available for increased productivity and ergonomics

TYPE	MODEL	MAX ROTOR DIAMETER	MAX ROTOR FACE WIDTH	MAX ROTOR FACE THICKNESS	DRUM DEPTH	MAX DRUM DIAMETER
Brake Lathe	JBC401BL	30"	5"	3"	9"	30"
Brake Lathe	JBC201BL	18"	4"	3"	4"	14"

TYRE CHANGER MONDOLFO FERRO

Automatic tyre changer for cars, lightweight transport vehicles and motor vehicles

- Motor power 0.85 kW - 1.1 kW
- Fast and impact for 10-26" wheel
- Working air pressure 8-10 bar

S524



S521



S421



MODEL	S524	S521	S421
OUTSIDE CLAMP	11" - 24"	10" - 21"	
INSIDE CLAMP	13" - 26"	12" - 24"	
MAX. WHEEL DIAMETER	1100 mm	1040 mm	960 mm
TIRE WIDTH	3" - 14"	3" - 12"	
BEAD-BREAKER OPENING	380 mm	320 mm	
WORKING AIR PRESSURE	8 - 10 bar		
CHUCK ROTATION SPEED	7 rpm - 2V 6.5 - 13 rpm		6,5 rpm
POWER REQUIREMENT	1Ph 200-230V 15A 3Ph 400V		
MACHINE WEIGHT	255 kg	246 kg	179 kg
MAX. DIMENSION	1150x920x1000 mm	1130x910x1010 mm	980x760x950 mm

TYRE CHANGER

60X



RC-55



TYPE	MODEL	RIM DIAMETER	MAX TYRE DIAMETER	MAX RIM WIDTH	WHEEL CLAMPING SYSTEM	AIR DRIVEN SYSTEM	ELECTRIC DRIVE SYSTEM	HELPER DEVICES	BEAD SEATING AIR VOLUM
Tyre Changer	60X	6" - 24" External	50" Max	14" Max	4 Clamps, Air Cylinder Operated	1.5 HP Air Motor, 110 - 175 psi, 15 scfm	1 HP Electric Motor, 115 V, 60 Hz, 15 amp	Robo-Arm® (18" of Automated Vertical Stroke)	5.4 Gallons in Tower
Tyre Changer	RC-55	6" - 24" External	50" Max	10.5" Max	4 Clamps, Air Cylinder Operated	1.5 HP Air Motor, 110 - 175 psi, 15 scfm	1 HP Electric Motor, 115 V, 60 Hz, 15 amp	RC Robo-Arm®	3.4 Gallons in Tower

TRUCK TYRE CHANGER

TBE 60 TERRA



S256



MODEL	MAX TYRE WIDTH	MAX TYRE DIAMETER	CLAMPING CAPACITY	HYDRAULIC CONTROL UNIT MOTOR
TBE 60 Terra	1800 mm (71")	3000 mm (118")	14" - 50" 60" by using extensions	4.8 kW (3ph)
S256	1100 mm (43")	2300 mm (90.5")	14" - 40" 56" with adaptor	1.5 kW (oil) 2.4 - 3.2 kW (gearbox)

WHEEL BALANCER MONDOLFO FERRO

Digital display wheel balancer completely automatic cycle for all types of steel and light alloy wheels for passenger cars, off-road vehicles, light commercial vehicles, Motor cycles.



S350	1270x1704x1089 มีฝาครอบล้อ	127 Kg	10" - 26" 1" - 35"	1.5" - 20"	22.8"	1118 mm 44"	70 Kg	115/230V 1Ph - 50/60Hz	150 rpm	250 W
S250	1214x541x1137 มีฝาครอบล้อ	96 Kg	10" - 26" 1" - 35"	1.5" - 20"	22.8"	1110 mm 43.7"	70 Kg	115/230V 1Ph - 50/60Hz	150+200 rpm	200 W

MT 3200



MT 3650



MT 3900



MT 4000



TYPE	MODEL	BALANCING SPEED	WHEEL DIAMETER RANGE	MAX WHEEL DIAMETER	MAX WHEEL WIDTH	SUPPLY VOLTAGE
Wheel Balancer	MT3200	90 - 130 rpm	10" - 28"	1117 mm.	600 mm.	115 - 230 V 1 ph, 50/60 Hz
Wheel Balancer	MT3650	90 - 130 rpm	10" - 28"	1117 mm.	600 mm.	115 - 230 V 1 ph, 50/60 Hz
Wheel Balancer	MT3900	75/85/ 98 rpm	10" - 28"	1117 mm.	560 mm.	115 - 230 V 1 ph, 50/60 Hz
Wheel Balancer	MT4000	75/85/ 98 rpm	10" - 28"	1118 mm.	600 mm.	115 - 230 V 1 ph, 50/60 Hz

TRUCK WHEEL BALANCER

MT2450



MT2650



TYPE	MODEL	READOUT ACCURACY (CAR-TRUCK)	RIM DIAMETER	RIM WIDTH	MAXIMUM WHEEL DIAMETER	MAX. WHEEL WEIGHT	DISPLAY
Truck wheel balancer	MT2450	1gr-1/10oz	7"-30" car 12"-30" truck	1,5"-22" car 4"-22" truck	1220 mm	65 KG car 300 KG Truck	Digital
Truck wheel balancer	MT2650	1 gr.	7" - 30" car 12" - 30" truck	1,5" - 22" car 4" - 22" truck	1220 mm	65 kg. car 200 kg. truck	Video

COMPUTERISED WHEEL ALIGNMENT

TRIGON 4 VISION



TRIGON NOVO



TYPE	MODEL	TOTAL TOE	CAMBER	CASTER	KING PIN	STEERING DIFFERENCE AT 20°	POWER SUPPLY
Wheel Aligners	TRIGON 4 Vision	± 20°	± 10°	± 30°	± 30°	± 10°	115/230V-1 Ph- 50/60Hz
Wheel Aligners	TRIGON NOVO	± 20°	± 10°	± 30°	± 30°	± 20°	115-230 Vac 50-60 Hz 1ph

725



728



TYPE	MODEL	TOTAL FRONT AND REAR TOE	HALF TOE	CAMBER	KING PIN	POWER SUPPLY
Wheel Aligners	725 (Pro Truck)	± 48°	± 24°	± 10°	± 30°	90/260V AC (50-60Hz) 1ph
	725 (Pro)	± 48°	± 24°	± 30°	± 30°	115/230V-1ph-50/60Hz

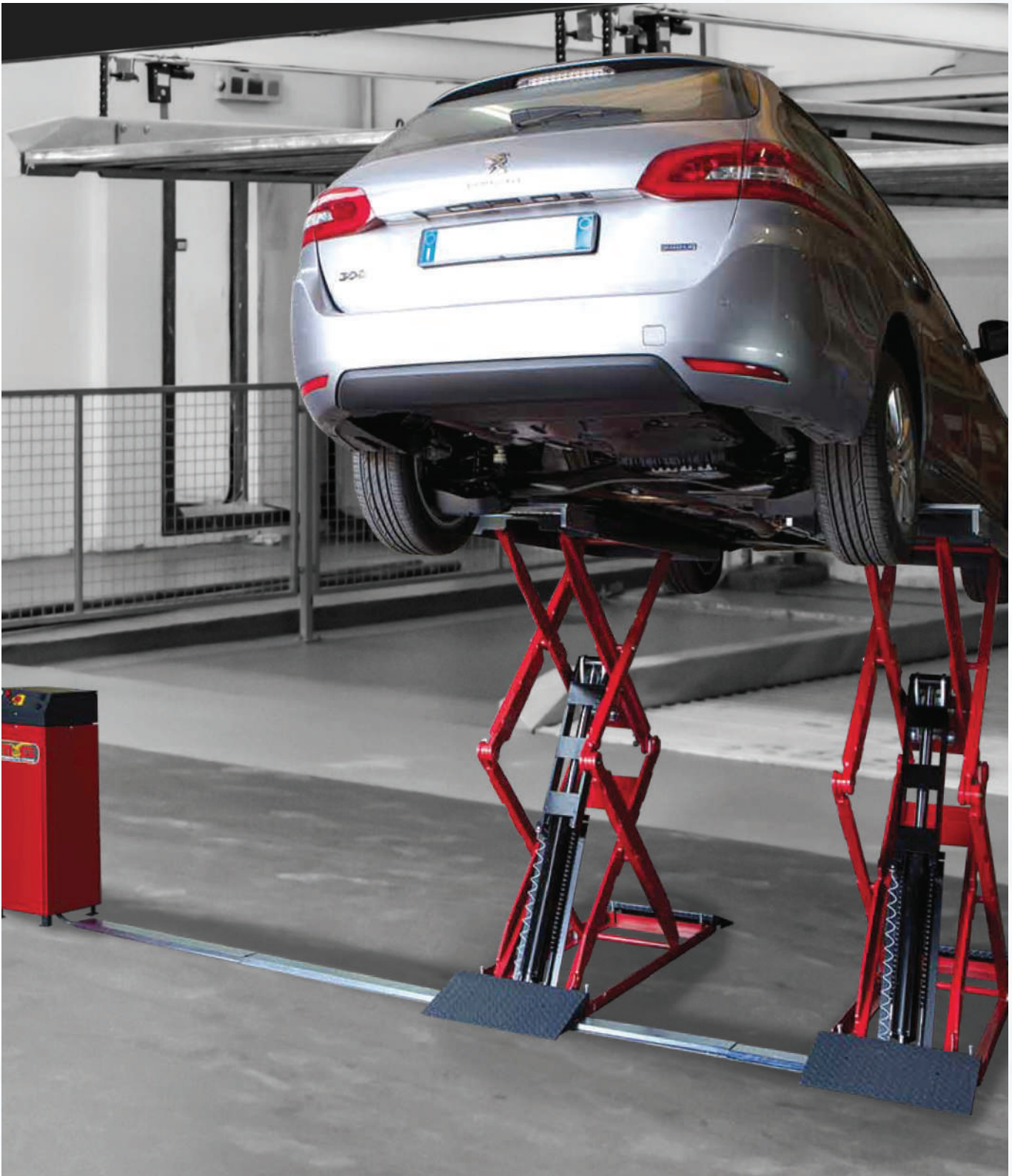
TYPE	MODEL	FRONT STEERING ANGLE	FRONT AND REAR INCLINATION	CAMBER AND KING PIN	FRONT AND REAR SET BACK	POWER SUPPLY
Wheel Aligners	728 (Platinum S)	± 60°	± 10°	± 30°	± 24°	115-230 Vac 50-60 Hz 1ph

LIFTING EQUIPMENT

TITAN

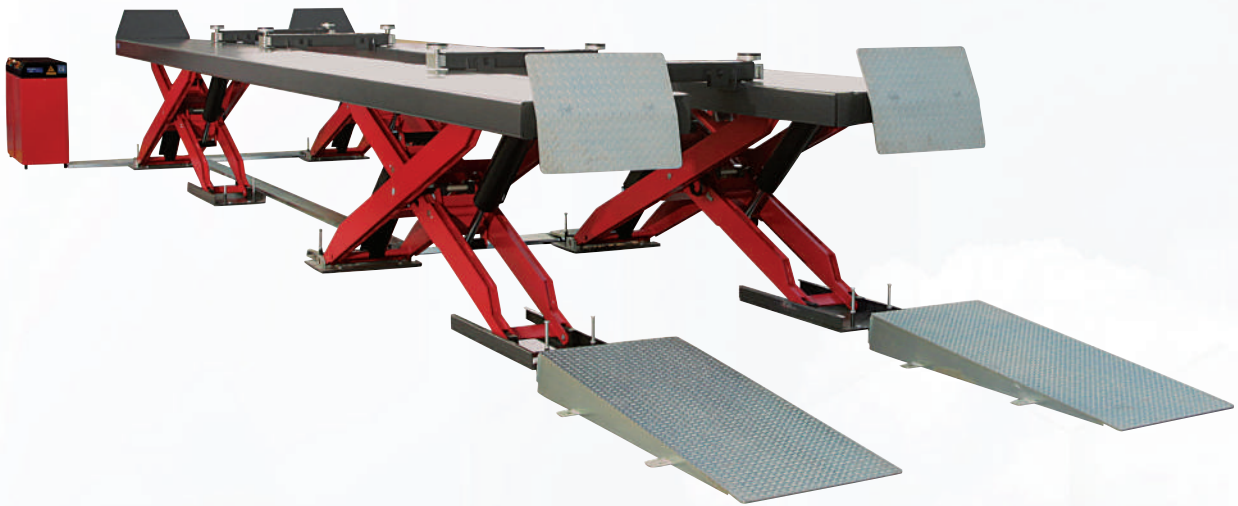


TYPE	MODEL	MAX CAPACITY	LIFTING TIME	PNEUMATIC POWER SUPPLY	MOTOR POWER	POWER SUPPLY
Lifting Equipment	X571LT X573LT X463LT	3500 kg.	8"	4-10 bar	3 kW	230/400V 3ph - 50Hz
	X571 X573 X461 X463	5000 kg./ 4300kg.	95"	4-10 bar	3 kW	230/400V 3ph - 50Hz



TYPE	MODEL	RAISING TIME	LOWERING TIME	PNEUMATIC POWER SUPPLY	MAX LIFTING HEIGHT	MOTOR POWER	POWER SUPPLY
Lifting Equipment	TITAN X 3000	40 s	40 s	4-10 bar (Version S)	1900 (version I) - 2000 mm.	3 kW	230-400V 3ph 50-60Hz, 230V 1ph 50Hz
Lifting Equipment	TITAN X 3500	40 s	40 s	4-10 bar (Version S)	1900 (version I) - 2000 mm.	3 kW	230-400V 3ph 50-60Hz, 230V 1ph 50Hz
Lifting Equipment	TITAN X 4000	40 s	40 s	4-10 bar (Version S)	1900 (version I) - 2000 mm.	3 kW	230-400V 3ph 50-60Hz, 230V 1ph 50Hz
Lifting Equipment	TITAN X2040T	40 s	40 s	-	1900 mm.	3 kW	230-400V 3ph 50-60Hz 230V 1ph 50Hz

MAGNUM



TYPE	MODEL	MAX CAPACITY	POWER SUPPLY	MOTOR POWER	POWER SUPPLY
Lifting Equipment	10/5.8	10 t	6 - 8 bar	5.5 kW	400V 3ph 50Hz
Lifting Equipment	20/7.5*	20 t	6 - 8 bar	5.5 kW	400V 3ph 50Hz
Lifting Equipment	20/10*	20 t	6 - 8 bar	5.5 kW	400V 3ph 50Hz
Lifting Equipment	30/11.25*	30 t	6 - 8 bar	7.5 kW	400V 3ph 50Hz
Lifting Equipment	30/13.75	30 t	6 - 8 bar	7.5 kW	400V 3ph 50Hz
Lifting Equipment	40/15	40 t	6 - 8 bar	7.5 kW	400V 3ph 50Hz
Lifting Equipment	50/18.75	40 t	6 - 8 bar	9.2 kW	400V 3ph 50Hz
Lifting Equipment	10/5.8 LT	10 t	6 - 8 bar	5.5 kW & 3 kW LT	400V 3ph 50Hz
Lifting Equipment	20/7.5 LT*	20 t	6 - 8 bar	5.5 kW & 3 kW LT	400V 3ph 50Hz
Lifting Equipment	20/10 LT*	20 t	6 - 8 bar	5.5 kW & 3 kW LT	400V 3ph 50Hz
Lifting Equipment	30/11.25 LT*	30 t	6 - 8 bar	7.5 kW & 3 kW LT	400V 3ph 50Hz
Lifting Equipment	30/13.75 LT	30 t	6 - 8 bar	7.5 kW & 3 kW LT	400V 3ph 50Hz
Lifting Equipment	40/15 LT	40 t	6 - 8 bar	7.5 kW & 3 kW LT	400V 3ph 50Hz
Lifting Equipment	50/18.75 LT	50 t	6 - 8 bar	9.2 kW & 3 kW LT	400V 3ph 50Hz

*also available in a DOUBLE LIFT version



TYPE	MODEL	LIFTING/ LOWERING TIME	PNEUMATIC POWER SUPPLY	MAX HIGHT	POWER SUPPLY	MOTOR POWER	
Lifting Equipment	TITAN PI 240N	V	49 s / 55 s	6 - 8 bar	3870 mm.	230-400V 3ph 50-60Hz, 230V 1ph 50Hz	2,6 kW (400V 3ph 50Hz)
Lifting Equipment		VX	49 s / 55 s	6 - 8 bar	4470 mm.	230-400V 3ph 50-60Hz, 230V 1ph 50Hz	2,6 kW (400V 3ph 50Hz)
Lifting Equipment		VXL	49 s / 55 s	6 - 8 bar	5070 mm.	230-400V 3ph 50-60Hz, 230V 1ph 50Hz	2,6 kW (400V 3ph 50Hz)
Lifting Equipment	TITAN PI 240E	V	49 s / 55 s	-	3870 mm.	230-400V 3ph 50-60Hz, 230V 1ph 50Hz	2,6 kW (400V 3ph 50Hz)
Lifting Equipment		VX	49 s / 55 s	-	4470 mm.	230-400V 3ph 50-60Hz, 230V 1ph 50Hz	2,6 kW (400V 3ph 50Hz)
Lifting Equipment		VXL	49 s / 55 s	-	5070 mm.	230-400V 3ph 50-60Hz, 230V 1ph 50Hz	2,6 kW (400V 3ph 50Hz)

* Max Capacity 4000 kg.



TITAN PI 441 B

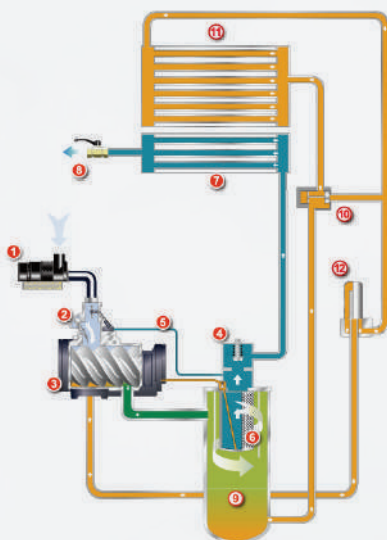
TYPE	MODEL	LIFTING TIME	LOWERING TIME	POWER SUPPLY	MOTOR POWER
Lifting Equipment	TITAN PI 441 B	34 s	33 s	230-400V 3ph 50-60Hz, 230V 1ph 50Hz	2,6 kW (400V 3ph 50Hz)

SCREW AIR COMPRESSORS

SA SERIES 08-90 KW



MODEL	DELIVERY M3/MIN	WORKING PRESSURE	MAIN MOTOR POWER	COMPRESSED AIR OUTLET	INDICATIVE DIMENSIONS			WEIGHT
					LENGTH	WIDTH	HEIGHT	
SA08A-10B	1	1.0 MPa	7.5 kW	3/4"	800 mm	670 mm	1100 mm	275 kg
SA15A-10B-C	2.1	1.0 MPa	15 kW	1"	1080 mm	880 mm	1298 mm	480 kg
SA22A-10B-C	3.2	1.0 MPa	22 kW	1"	1080 mm	880 mm	1298 mm	600 kg
SA55A-10B-C	8.50	1.0 MPa	55 kW	2"	2250 mm	1344 mm	1694 mm	2150 kg
SA90A-10B-C	13.6	1.0 MPa	90 kW	2"	2250 mm	1344 mm	1694 mm	2250 kg



SYSTEM FLOW CHART

AIR FLOW

1. Air filter
2. Air inlet valve
3. Air compressor airen
4. Minimum pressure valve(MPV)
5. Air inlet control piping
6. Oil fine separator
7. After cooler
8. Air outlet valve

OIL FLOW

9. Oil separator tank
10. Thermal control valve
11. Oil cooler
12. Oil filte

PISTON AIR COMPRESSOR

FUSHENG A SERIES

- Superior wear resistance for all crankshafts
- Tight sealing and low oil consumption
- High shock and temperature tolerance
- High seal fitting cylinders with low compression leakage
- Auto-unload valve for safe operation
- High quality bearings for long service life

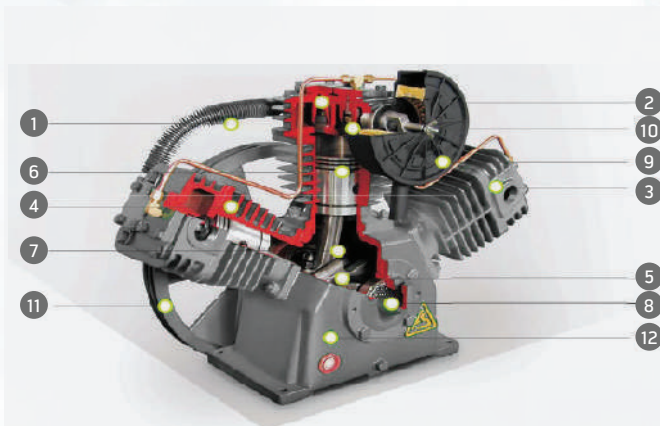


SINGLE-STAGE AIR-COOLED AIR COMPRESSOR

MODEL	MOTOR		CYLINDER			COMP R.P.M.	PISTON DISP.		ACTUAL AIR DELIVERY AT 8 BAR		WORKING PRESSURE	AIR RECEIVER			AIR OUTLET
			BORE	NO.	STROK		L/MIN	CFM	L/MIN	CFM		AIR TANK VOLUME	DIMENSIONS	MAX PRESSURE	
												LITERS	Ø MM X MM		
VA-65	1 HP	0.75 kW	65 mm	2	44 mm	500	146	5.15	88	3.1	8 bar	105	360 x 1160	10 bar	1/2 Inch
VA-80	3 HP	2.2 kW	80 mm	2	60 mm	651	393	13.88	360	12.71	8 bar	155	390 x 1410	10 bar	1/2 Inch
TA-80	5 HP	3.7 kW	80 mm	3	60 mm	702	635	22.42	530	18.71	8 bar	245	485 x 1440	10 bar	1/2 Inch
TA-100	10 HP	7.5 kW	100 mm	3	70 mm	739	1218	43.01	1000	35.32	8 bar	500	640 x 1760	10 bar	3/4 Inch

TWO-STAGE AIR-COOLED AIR COMPRESSOR

MODEL	MOTOR		CYLINDER			COMP R.P.M.	PISTON DISP.		ACTUAL AIR DELIVERY AT 8 BAR		WORKING PRESSURE	AIR RECEIVER			AIR OUTLET
			BORE	NO.	STROK		L/MIN	CFM	L/MIN	CFM		AIR TANK VOLUME	DIMENSIONS	MAX PRESSURE	
												LITERS	Ø MM X MM		
HTA-65H	3 HP	2.2 kW	51 mm	1	48 mm	916	292	10.31	220	7.77	12 bar	155	390 x 1410	13.5 bar	1/2 Inch
HTA-80	5 HP	3.7 kW	65 mm	1	60 mm	954	575	20.3	450	15.89	12 bar	304	490 x 1760	13.5 bar	1/2 Inch
HTA-100H	10 HP	7.5 kW	80 mm	1	70 mm	888	976	34.47	800	28.25	12 bar	500	640 x 1760	13.5 bar	3/4 Inch
HTA-120	15 HP	11 kW	100 mm	1	80 mm	805	1455	51.39	1220	43.09	12 bar	500	640 x 1760	13.5 bar	3/4 Inch



AIR-COOLED RECIPROCATING AIR COMPRESSOR INTERNAL STRUCTURE

1. Cooling copper tubing
2. Inlet and outlet valves
3. Cylinder head
4. Cylinder
5. Crankshaft
6. Piston ring
7. Connecting rod
8. Bearing
9. Air filter
10. Automatic unloading device
11. Belt-driven pulley for the compressor
12. Crankcase

AIR-COOLED REFRIGERATION DRYER

FUSHENG FR SERIES

- Ozone-friendly
- Piping Condensation Prevention
- Anti-corrosion
- User-friendly Control Panel
- Easy Maintenance



FR SERIES AIR-COOLED REFRIGERATION DRYER

MODEL	MAX. CAPACITY (M3/MIN)	AIR INLET TEMP.	AMBIENT TEMP.	DEW POINT	OPERATING PRESSURE	REFRIGERANT	POWER CONSUMPTION	POWER SUPPLY	AIR PIPING SIZE	DIMENSIONS			NET WEIGHT
										H	W	D	
10AP	1.4	50°C	32°C	2-10°C at 7 kg/cm ²	0.7 Mpa	R134a	0.55 kW	220V / 1ph / 50Hz	G1"	740 mm	735 mm	470 mm	68 kg
20AP	2.7	50°C	32°C	2-10°C at 7 kg/cm ²	0.7 Mpa	R134a	0.8 kW	220V / 1ph / 50Hz	G1 1/4"	770 mm	825 mm	470 mm	90 kg
30AP	3.7	50°C	32°C	2-10°C at 7 kg/cm ²	0.7 Mpa	R22	1.1 kW	220V / 1ph / 50Hz	G1 1/2"	920 mm	1070 mm	600 mm	140 kg
50AP	7.2	50°C	32°C	2-10°C at 7 kg/cm ²	0.7 Mpa	R22	1.5 kW	220V / 1ph / 50Hz	G2"	920 mm	1070 mm	600 mm	150 kg
100AP	15	50°C	32°C	2-10°C at 7 kg/cm ²	0.7 Mpa	R22	2.7 kW	380V / 3ph / 50Hz	DN80	1150 mm	1700 mm	940 mm	365 kg

*Maximum air inlet temperature limit : 80°C

*Maximum operation pressure : 0.98 Mpa

*Ambient temperature : 2-40°C

FSR SERIES AIR-COOLED REFRIGERATION DRYER

MODEL	MAX. CAPACITY (M3/MIN)	AIR INLET TEMP.	AMBIENT TEMP.	DEW POINT	OPERATING PRESSURE	REFRIGERANT	POWER SUPPLY	AIR PIPING SIZE	DIMENSIONS			NET WEIGHT
									L	W	D	
015S	1.2	10-80°C	5-50°C	2-10°C	0.6-1.6 Mpa	R134a	220V/50Hz	G1	400 mm	550 mm	730 mm	57 kg
020S	2.5	10-80°C	5-50°C	2-10°C	0.6-1.6 Mpa	R134a	220V/50Hz	G1	520 mm	540 mm	890 mm	66 kg
030S	3.7	10-80°C	5-50°C	2-10°C	0.6-1.6 Mpa	R410a	220V/50Hz	G1	520 mm	540 mm	890 mm	79 kg
060S	8.5	10-80°C	5-50°C	2-10°C	0.6-1.6 Mpa	R410a	220V/50Hz	G1	610 mm	900 mm	1070 mm	99 kg
100S	12.8	10-80°C	5-50°C	2-10°C	0.6-1.6 Mpa	R410a	220V/380V/50Hz	G2	610 mm	900 mm	1070 mm	113 kg

WHEELED CHARGERS



6023



6027B



6512



6127XL



TYPE	MODEL	CONTINUOUS AMPERAGE CHARGING RATE	CRANK ASSIST	DC LEADS	CLAMP RATING	WEIGHT (POUNDS) LBS	BATTERY TYPE
Wheeled charger	6023	60/50/25 Amp	300A	8' 4AWG	400 Amp	50 Lbs	6/12/24 Volt
Wheeled charger	6027 B	90/75/55 Amp	500A	8' 4AWG	500 Amp	75 Lbs	6/12/24 Volt
Wheeled charger	6512/6512G	100/80/30 Amp	500A	6' 7" 4 AWG	400 Amp	49 Lbs	6/12/24 Volt
Wheeled charger	6127XL	-	Up to 1100A	8' 4AWG	500 Amp	54 Lbs	12 Volt

BATTERY AND ELECTRICAL SYSTEM TESTERS



TYPE	MODEL	VOLT METER	BATTERY CCA TEST RANGE	LEADS	CLAMPS
Battery Tester	12-1015	9-15 Volts DC	100 - 1700 CCA	6 FT	Kelvin Connection

FOUR POST RUNWAY FORKLIFT SERVICE LIFT



TYPE	LIFTING CAPACITY	LIFTING HEIGHT	LIFTING/ LOWERING SPEED	TRACK DIMENSIONS	RAMP DIMENSIONS	LIFT DIMENSIONS	MOTOR
Forklift Lift	12.5 tons (25,000 lbs.) minimum	69 1/4 inches (minimum)	30 inches per minute	Length: 178 inches Width: 24 inches	Width: 24 inches Height: 9 1/4 inches	Width: 150 1/4 inches Length: 243 1/4 inches	208-230 VAC, 1 phase, 60 Hz

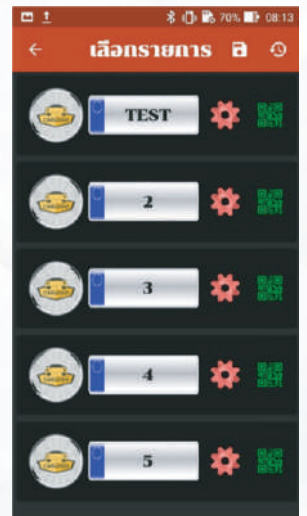
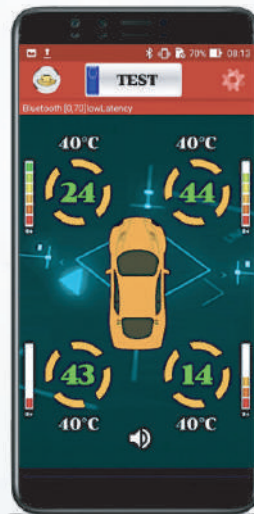
tSm™

QUALITY PRODUCT OF UNITED MOTOR WORKS (SIAM)
Developed by AGS



TYRE SENSOR

Technology has revolutionized our world, created amazing tools and placed useful information at our fingertips. tSm™ was developed by UMWS Automotive Garage Solution for this reason. This is a smart tech that helps monitor tire pressure while integrating with our digital lifestyle. The Real-Time Data on our tSm™ Mobile Application gives you confidence on the road.



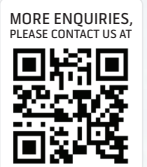


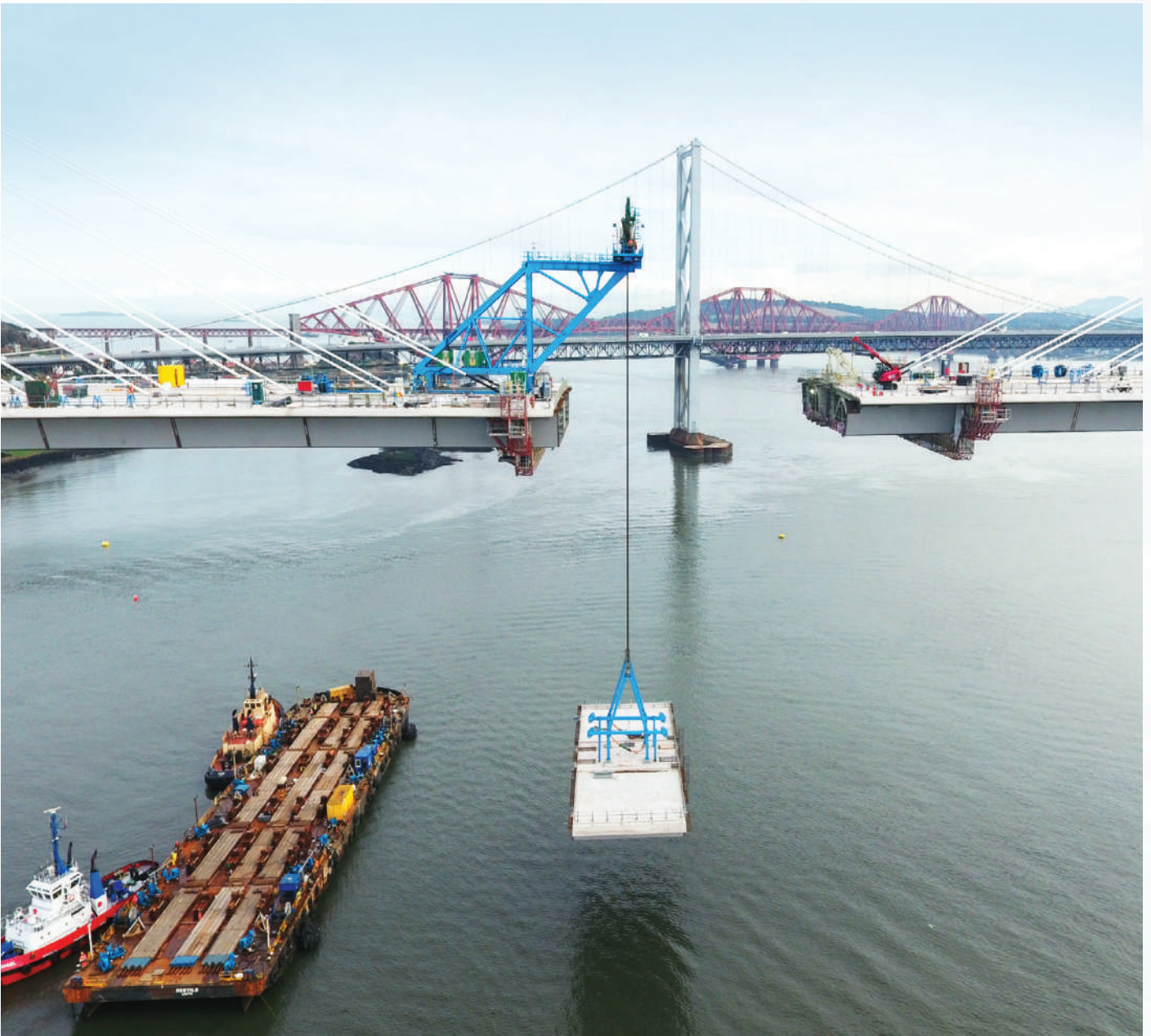
PORTABLE INFLATOR

tSm™ portable inflators is lightweight and easy carry. The multipurpose inflation nozzle supports all your inflation needs be it vehicle tires, sports equipment or children toys.



SIZE	PRESSURE	AIR FLOW	POWER	N.W	CHARGE TIME
54.8*44.8*240mm	150 PSI	9-15 Volts DC	12V / 5A / 60W / 2000 mAh	360 g.	At least 4 hours charging for first time, next time should be charged 2 hours.





HYDRAULIC TOOLS & MACHINES



HYDROLUTION builds high and low pressure of Hydraulics Cylinders, tools and equipment with CE Certified that is used in wide range of heavy industrial markets and application. Range of products are very diverse and can be divided into several categories to meet different market demand that make us different from others. Our high-quality products meet your high-pressure application with reasonable and competitive prices to meet the current market demand and help customer to get their return of investment fast

HEAVY DUTY HYDRAULIC CYLINDER

HYDRAULIC CYLINDER DOUBLE ACTING WITH TILT SADDLE MODEL : DCT SERIES

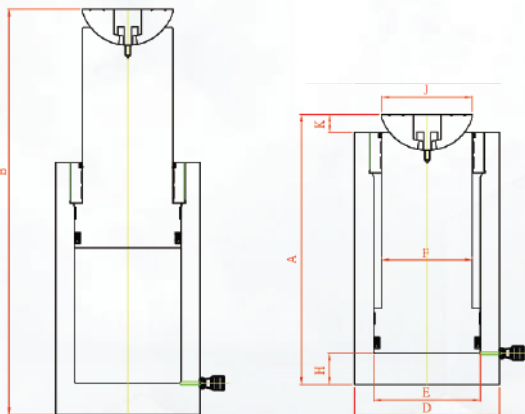
Capacity : 50-1,500 Tons

Stroke : 50-500 mm.

Max. Operating Pressure : 700bar/10,000psi

FEATURES

- DCT Series high tonnage double acting hydraulic cylinders are designed specifically for heavy lifting up to 1,500 tons.
- Double-acting, for positive retraction.
- Integral stop ring provides piston blow-out protection.
- Interchangeable, hardened grooved tilt saddles are standard.
- Built-in safety valve prevents accidental over-pressurization.
- Plunger wiper reduces contamination, extending cylinder life.
- Special synthetic coating on external surface and plated chrome pistons provide superior corrosion resistance.
- C8F coupler and dustcap included on all models.
- Customized capacity and strokes available.



MODEL NO.	CAPACITY (TON/KN)	STROKE (MM)	COLLAPSED HEIGHT A (MM)
DCT-502	50	50	200
DCT-506		150	300
DCT-5012		300	485
DCT-5020		500	742
DCT-1002	100	50	210
DCT-1006		150	315
DCT-10012		300	505
DCT-10020		500	775
DCT-1502	150	50	235
DCT-1506		150	340
DCT-15012		300	550
DCT-15020		500	785
DCL-2002	200	50	240
DCT-2006		150	345
DCT-20012		300	560
DCT-20020		500	800
DCT-2502	250	50	255
DCT-2506		150	355
DCT-25012		300	565
DCT-25020		500	865
DCT-3002	300	50	275
DCT-3006		150	410
DCT-30012		300	600
DCT-30020		500	960
DCT-4002	400	50	305
DCT-4006		150	425
DCT-40012		300	650
DCT-40020		500	975
DCT-5002	500	50	347
DCT-5006		150	447
DCT-50012		300	702
DCT-50020		500	997
DCT-6002	600	50	370
DCT-6006		150	470
DCT-60012		300	710
DCT-60020		500	1005
DCT-8002	800	50	410
DCT-8006		150	510
DCT_80012		300	740
DCT-80020		500	1035
DCT-10002	1000	50	460
DCT-10006		150	560
DCT-100012		300	760
DCT-100020		500	1065
DCT-12002	1200	50	505
DCT-12006		150	605
DCT-120012		300	805
DCT-120020		500	1115
DCT-15002	1500	50	555
DCT-15006		150	655
DCT-150012		300	835
DCT-150020		500	1145

HYDRAULIC CYLINDER LOCK NUT WITH TILT SADDLE, SINGLE ACTING MODEL : PSLT SERIES

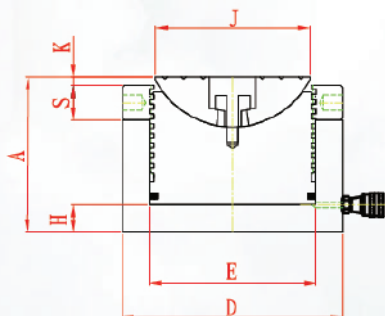
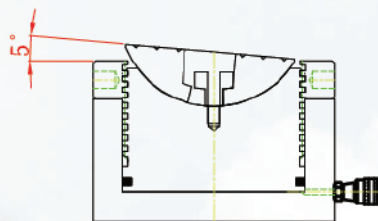
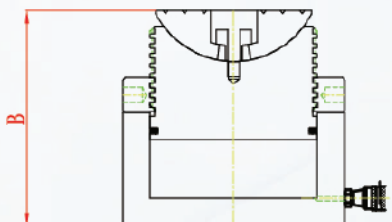
Capacity : 60-800 Tons

Stroke : 50, 75 mm.

Max. Operating Pressure : 700bar/10,000psi

FEATURES

- PSLT Series flat lock nut cylinders have an extremely low height for use in confined areas.
- Lock nut for positive and safe mechanical load holding over a long period of time.
- Single-acting, load return, non-stop ring design.
- Overflow port functions as a stroke limiter.
- Interchangeable, hardened grooved tilt saddles are standard
- Special synthetic coating on external surface and plated chrome pistons provide superior corrosion resistance.
- C8F coupler and dustcap included on all models.
- Customized capacity and strokes available.



MODEL NO.	CAPACITY (TON/KN)	STROKE (MM)	COLLAPSED HEIGHT A (MM)
PSLT-602	60	50	135
PSLT-603		75	165
PSLT-1002	100	50	142
PSLT-1003		75	172
PSLT-1502	150	50	159
PSLT-1503		75	189
PSLT-2002	200	50	165
PSLT-2003		75	195
PSLT-2502	250	50	171
PSLT-2503		75	201
PSLT-3002	300	50	179
PSLT-3003		75	209
PSLT-4002	400	50	193
PSLT-4003		75	226
PSLT-5002	500	50	211
PSLT-5003		75	241
PSLT-6002	600	50	222
PSLT-6003		75	257
PSLT-8002	800	50	255
PSLT-8003		75	285

CYLINDERS MODEL : NSSS SERIES

Capacity: 4.5 - 100 Ton

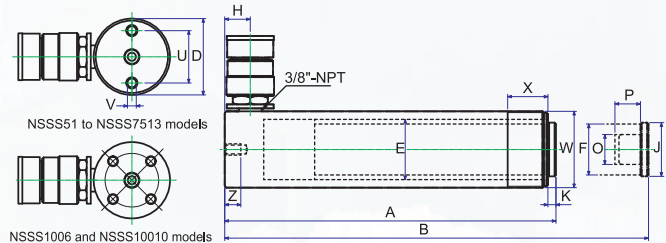
Stroke: 25.4 - 406 mm

Max. Working Pressure: 700 bar / 10,000 psi



FEATURES

- All cylinders are single acting with spring return.
- Pistons hard chromed.
- Cylinders inside roll-polished.
- Cylinders outside blasted with black nitriding finish.



NSSS-SERIES, STANDARD CYLINDERS

MODEL NO.	CAPACITY (TON)	STROKE (MM)	OIL CAP (CM ³)	HIGHT (MM)		D (Ø MM)	E (Ø MM)	F (Ø MM)	H (MM)	J (MM)	K (MM)	O (Ø UN)	P (MM)	U (MM)	V (Ø UNC)	Z (MM)	W (Ø UN)	X (MM)	WEIGHT (KGS)									
				RETRACTED	EXTENDED																							
NSSS51	4.5	26	17	110	136	38	28.6	25.4	19	25	6	¾"-16	14	25	¼"-20	14	1 ½"-16	28	1									
NSSS53	5	76	54	165	241		30						14						1.5									
NSSS55		127	90	216	343		30						14						1.9									
NSSS57		183	129	273	456		30						16						2.4									
NSSS59		232	164	324	556		30						16						2.8									
NSSS101	10	25.4	36.5	90	115.4	57	42.8	38	19	-	-	#10-24UN	6.5	39	5/16"-18	13	2 ¼"-14	30	1.8									
NSSS102		51	73	121	172		42.8			40	6	1"-8	19						2.3									
NSSS104		101	145	171	272		42.8			40	6	1"-8	19						3.3									
NSSS106		152.5	242	247	399.5		45			40	6	1"-8	19						4.4									
NSSS108		203.5	323	298	501.5		45			40	6	1"-8	19						5.4									
NSSS1010		255.5	406	350	605.5		45			40	6	1"-8	19						6.4									
NSSS1012		305.5	486	400	705.5		45			40	6	1"-8	19						6.8									
NSSS1014		356.5	567	451	807.5		45			40	6	1"-8	19						8.2									
NSSS151		15	26.5	63	124		150.5			73	55	40	19						38	9.6	1"-8	25.4	47.7	3/8"-16	13	2 ¾"-16	30	3.3
NSSS152			52.5	125	149.6		202.1						19															4.1
NSSS154	102.5		243	200	302.5	19	5																					
NSSS156	153		363	271.6	424.6	25	6.8																					
NSSS158	203.5		483	322	525.5	25	8.2																					
NSSS1510	254.5		604	373	627.5	25	9.5																					
NSSS1512	305		724	424	729	25	10.9																					
NSSS1514	355.7		845	474.6	830.3	25	11.8																					
NSSS1516	406		824	523	829	25	12.8																					
NSSS251	25	25.5	98	139.5	165	88	70	55	25	50	10.5	1 ½"-16	25.4	58	½"-13	19	3 5/16"-12	50	5.9									
NSSS252		51	196	165	216														6.4									
NSSS254		102	392	216	318														8.2									
NSSS256		158.5	610	273	431.5														10									
NSSS258		209.5	806	324	533.5														12.2									
NSSS2510		260.5	1002	375	635.5														14.1									
NSSS2512		311	1196	425.5	736.5														16.3									
NSSS2514		361.5	1390.5	476	837.5														17.7									
NSSS308	30	209.5	925	387.5	597	103	75	60	57	50	10.5	1 ½"-16	25.4	-	-	-	4"-12	50	18.1									
NSSS502	50	51	361	177	228	127	95	80	33	70	3	-	-	95	½"-13	19	5"-12	55	15									
NSSS504		101.5	719	229	330.5														19.1									
NSSS506		157.5	1116	283	440.5														23.1									
NSSS508		203	1446	349	552														27.1									
NSSS5010		260	1853	385	645														30.4									
NSSS5013		335.5	2377	461	796.5														37.6									
NSSS756	75	155	1752	285	440	152	120	95	30	70	3	-	-	-	-	-	5 ¾"-12	45	29.5									
NSSS7513		333.5	3770	491	824.5														59									
NSSS1002	100	50	715	238	288	177	135	105	40	70	3	-	-	139	¾"-10	25	6 7/8"-12	45	43									
NSSS1004		100	1430	288	388														50									
NSSS1006		170	2432	358	528														59									
NSSS10010		260	3720	448	708														72.6									

FLAT CYLINDERS MODEL : NSLS SERIES



Capacity: 5 - 150 Ton

Stroke: 6 - 17 mm

Max. Working Pressure: 700 bar / 10,000 psi

FEATURES

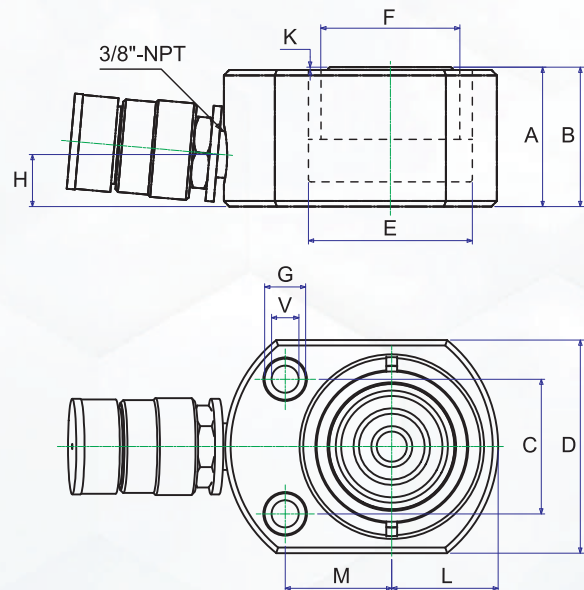
- All cylinders are single acting with spring return.
- Pistons hard chromed.
- Cylinders inside roll-polished.
- Cylinders outside blasted with black nitriding finish.



HAND / FOOT PUMPS



HIGH PRESSURE ACCESSORIES



NSLS-SERIES, FLAT CYLINDERS

MODEL NO.	CAPACITY (TON)	STROKE (MM)	OIL CAP (CM ³)	A		B	C (MM)	D (MM)	E (Ø MM)	F (Ø MM)	H (MM)	K (MM)	V (Ø MM)	G (Ø MM)	O (Ø MM)	P (Ø MM)	U (MM)	L (MM)	M (MM)	WEIGHT (KG)
				HIGH (MM)																
				RETRACTED	EXTENDED															
NSLS50	5	6	4.5	33	39	28.5	58.5x44	31	25.4	16	1	5.3	9.5	-	-	-	22	22	0.7	
NSLS100	10	12	18.0	42	54	36.5	82.5x60	44	38	19	1	7.5	11	-	-	-	30	34	1.6	
NSLS200	20	12	34.0	51	63	49.3	100x78	60	50.8	19	1	10	15	-	-	-	39	39	2.6	
NSLS300	30	13	54.0	58	71	52.3	117.5x95	73	63.5	19	2	10	16	-	-	-	47.5	47.5	4.5	
NSLS500	50	16	113.0	66	82	66.5	145x115	95	70	19	2	11	19	-	-	-	57.5	58	6.8	
NSLS750	75	16	180.0	79	95	76.2	170x145	120	82.5	19	2	13.5	20.5	-	-	-	72.5	70	11.3	
NSLS1000	100	16	229.0	85	101	76.2	185x160	135	92	19	2	13.5	20.5	-	-	-	80	78	14.5	
NSLS1500	150	17	363.0	100	117	117	225x195	165	115	23	2	13.5	20.5	-	-	-	97.5	85	26.3	

HYDRAULIC CYLINDERS : NSCS-SERIES



Capacity: 10 - 100 Ton

Stroke: 38 - 62 mm

Max. Working Pressure: 700 bar/ 10,000 psi

FEATURES

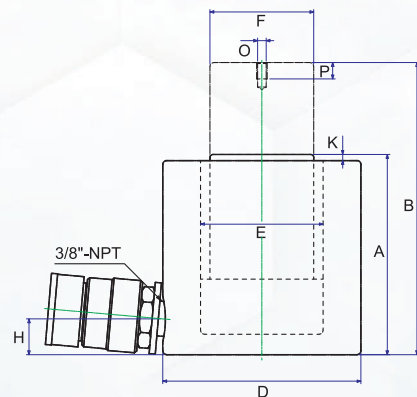
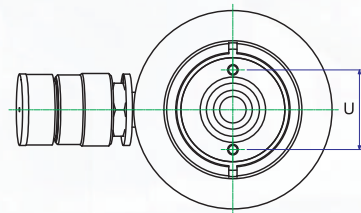
- All cylinders are single acting with spring return.
- Pistons hard chromed.
- Cylinders inside roll-polished.
- Cylinders outside blasted with black nitriding finish.



HAND / FOOT PUMPS



HIGH PRESSURE ACCESSORIES



NSCS-SERIES, COMPACT CYLINDERS

MODEL NO.	CAPACITY (TON)	STROKE (MM)	OIL CAP (CM ³)	A B		C (MM)	D (MM)	E (Ø MM)	F (Ø MM)	H (MM)	K (MM)	V (Ø MM)	G (Ø MM)	O (Ø MM)	P (Ø MM)	U (MM)	L (MM)	M (MM)	WEIGHT (KG)
				HIGHT (MM)															
				RETRACTED	EXTENDED														
NSCS101	10	38	55.0	88	126	-	78	42.8	38	17.5	5	-	-	M4	8	26	-	-	4.1
NSCS201	20	45	127.0	98	143	-	97	60	50.8	17.5	3	-	-	M5	9	39	-	-	5
NSCS302	30	62	274.0	117	179	-	107	75	63.5	19	3	-	-	M5	8	39	-	-	6.8
NSCS502	50	60.5	429.0	127	187.5	-	127	95	70	19	2	-	-	M5	8	39	-	-	10.9
NSCS1002	100	58	830.0	146.5	204.5	-	165	135	92	25	1.5	-	-	M8	10	55	-	-	22.7

HYDRAULIC PUMPS

ALUMINUM HAND PUMPS MODEL : AHP & UHP SERIES

Single & Dual – speed models

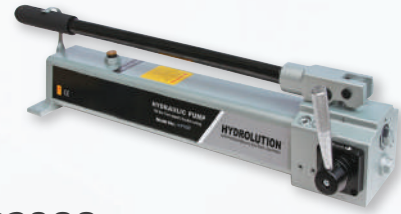
Large 3/8" NPT pressure port for maximum flow

Max. working pressure: 700 - 2800 bar

FEATURES

- Rugged construction and light handle efforts.
- Aluminum Alloy construction and handy release knob with anti-losing mechanism are truly suitable to industrial requirements and your daily works.
- The light weight design is ideally for easy operation and portability.
- Double action design on AHP703D is ideal for double acting cylinders, no extra control valve and adapters are requested.
- UHP2800 brings you special ultra high pressure application but with light weight.
- UHP2800JQ directly mounted with Pressure gauge and no extra adaptors needed. More efficient and convenient.

AHP703D



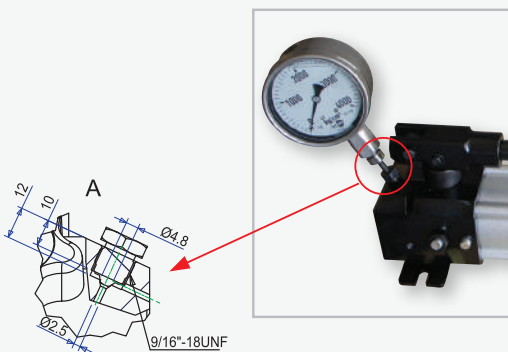
UHP2800



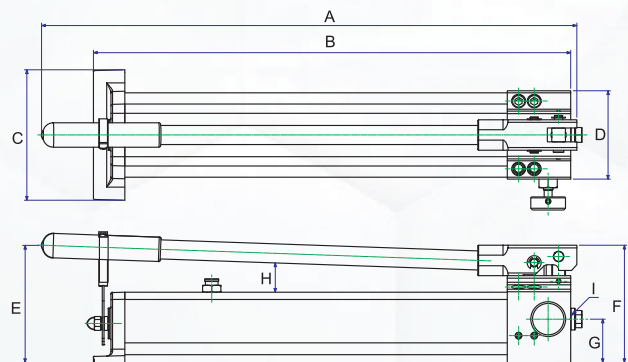
AHP705



AHP701



The gauge can be mounted directly on UHP2800JQ, the cone thread for gauge port is 9/16"-18UNF



SPECIFICATIONS

MODEL NO.	PRESSURE RATING (BAR)		OIL CAPACITY (CC.)	USABLE OIL CAPACITY (CC.)	OIL VOLUME PER STROKE (C.C.)		A (MM)	B (MM)	C (MM)	D (MM)	E (MM)	F (MM)	G (MM)	H (MM)	I	WEIGHT (KGS)
	1ST STAGE	2ND STAGE			1ST STAGE	2ND STAGE										
AHP701	20	700	500	350	12.9	1.65	391	361	110	77	140	127	42.5	37	3/8"-NPT	2.3
AHP702	20	700	1000	750	12.9	1.65	542	513	110	77	130	127	42.5			3.5
AHP703	20	700	2000	1620	12.9	2.30	623	556	150	102	135	135	50			6
AHP703D	20	700	2000	1620	12.9	2.30	623	556	150	102	135	135	24/37			7.0
AHP704	20	1000	1000	750	12.9	1.65	539	501	110	77	145	127	42.5			3.5
AHP705	20	1500	2000	1620	12.9	1.00	699	629	150	102	152	157	50	37	3/4"-16UNF	6.7
UHP2800	20	2800	1000	700	12.9	0.65	620	488	79.5	140	157	156.5	26		3/4"-16UNF	6.7
UHP2800JQ	20	2800	1000	700	12.9	0.65	617	568	79.5	140	157	156.5	93		G 1/4"	6.7

STEEL HAND PUMPS MODEL : HA-HF SERIES

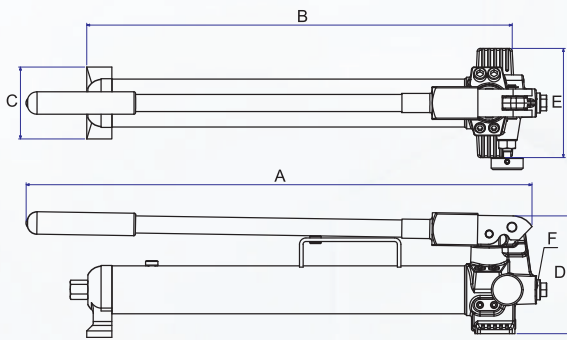
Single & Dual-speed models

Large 3/8" pressure port for maximum flow.

Max. working pressure: 200 & 700 bar

FEATURES

- Rugged construction and light handle efforts.
- Handy release knobs with anti-leaking mechanism are truly suitable to industrial requirement and your daily works.
- Both single and Dual-speed models are available.
- Internal overload relief valve prevents pump from being used beyond its rated capacity.
- External adjustable relief valve with anti-losing mechanism design.
- Carrying handle for easy portability.
- HE2421 equipped with Control valve for applying with double action cylinders.



SPECIFICATIONS

MODEL NO.	PRESSURE RATING (BAR)		OIL CAPACITY (CC.)	USABLE OIL CAPACITY (CC.)	OIL VOLUME PER STROKE (C.C.)		A (MM)	B (MM)	C (MM)	D (MM)	E (MM)	OIL PORT THREAD F	WEIGHT (KGS)
	1ST STAGE	2ND STAGE			1ST STAGE	2ND STAGE							
HB350	20	200	350	250	13.0	2.8	342	310	66	148	137	3/8 NPT	5.9
HB600	20	700	750	550	13.0	2.8	542	480	90	148	137	3/8 NPT	7.6
HB700	20	700	850	640	13.0	2.8	633	528	90	148	137	3/8 NPT	8
HC1500	20	700	1500	1200	13.0	2.8	633	551	106	200	142	3/8 NPT	11.2
HC2500	20	700	2500	2200	13.0	2.8	713	632	106	200	142	3/8 NPT	12
HE2000	20	700	2100	1800	13.0	2.8	580	523	140	189	148	3/8 NPT	11.5
HE2421	20	700	2100	1800	13.0	2.8	580	523	140	189	148	-	12.0
HF350	20	700	350	280	7.0	1.0	343	310	66	127	142	3/8 NPT	5.5
HA350	200		350	280	3.2		332	292	90	148	137	3/8 NPT	5.7
HA600	700		750	550	3.2		542	478	90	148	137	3/8 NPT	7.1
HA700	700		850	640	3.2		632	526	90	148	137	3/8 NPT	7.6
HD300	700		300	200	2.8		330	283	90	127	130	1/4 NPT	4.4
HD500	700		500	400	2.8		530	469	90	127	130	1/4 NPT	5.4

HE2421



HC1500



HE2000

HB350

7L RESERVOIR HAND PUMPS MODEL : HP80 & HP80D SERIES

Dual-speed models
 Large 3/8" NPT pressure port for max. flow
 Heavy-Duty, Large reservoir
 Max. working pressure: 700 bar

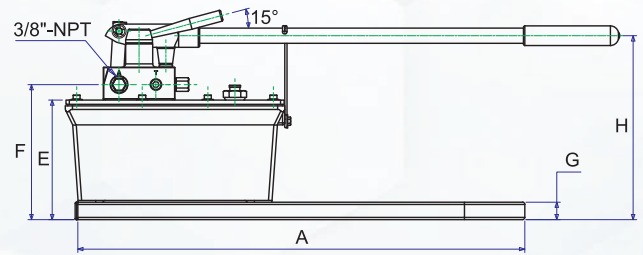
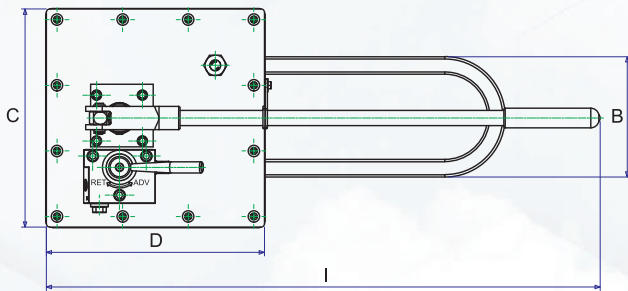
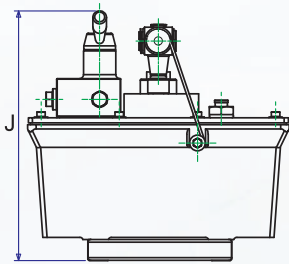
FEATURES

- Casting tank made of steel.
- Internal overload relief valve prevents pump from being used beyond its rated capacity.
- HP80D is ideal for double-acting cylinders without the need for additional control valve.

HP80



HP80D



SPECIFICATIONS

MODEL NO.	PRESSURE RATING (BAR)		OIL CAPACITY (CC)	OIL VOLUME PER STROKE (C.C.)		A (MM)	B (MM)	C (MM)	D (MM)	E (MM)	F (MM)	G (MM)	H (MM)	I (MM)	J (MM)	WEIGHT (KG)
	1ST STAGE	2ND STAGE		1ST STAGE	2ND STAGE											
HP80	27.5	700	8000	113	4	635	171	310	310	170	192	25	261	787	298	24.7
HP80D	27.5	700	8000	113	4	635	171	310	310	170	196	25	261	787	298	27.5

AIR HYDRAULIC FOOT PUMP MODEL : AP1600 SERIES

Single & Double acting models
 Max. working pressure : 700 bar

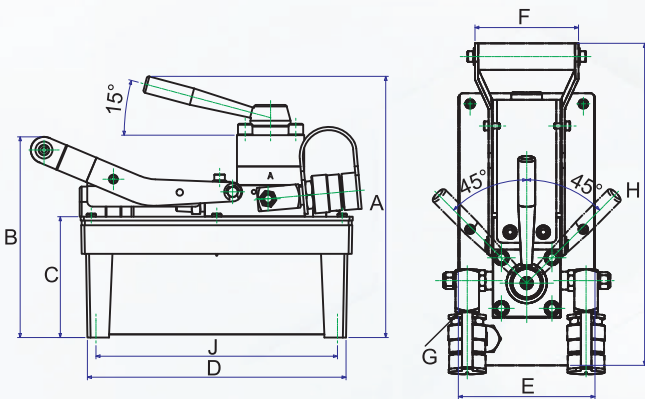
FEATURES

- Air-power hydraulic pump is designed for using with single -acting cylinders and tools.
- Rugged construction and most components are made of Aluminum alloy and built for long service life, easy operation and portability.
- Automatic overload relief valve setting as 10,000 psi protects components in hydraulic system and ensure work safety.
- New Inlet & Outlet design features low exhausting air volume, quiet effect and can be operated in all directions.
- Oil capacity can be modified according to your specific application.

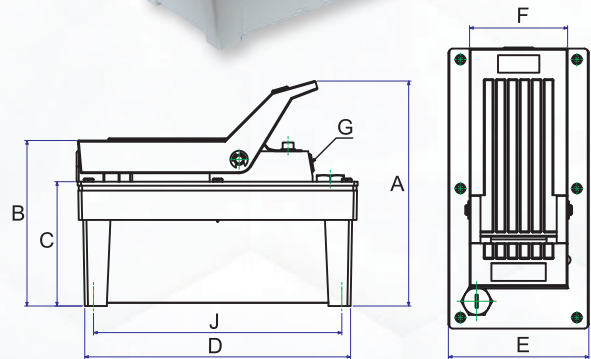
AP1600D



AP1600S



AP1600D



AP1600S

SPECIFICATIONS

MODEL NO.	ACTING	MAX. PRESSURE OUTPUT (PSI)	VALVE		OIL DEL. (C.C./MIN. @)*			
			TYPE	FUNCTION	0(Psi)	100(Psi)	5000(Psi)	10000(Psi)
AP1600S	Single	10,000	-	Advance	1250	-	-	195
AP1600D	Double	10,000	3 Position / 4 Way	Advance/ Hold/Retract	1250	-	-	195

MODEL NO.	INPUT AIR PRESSURE (KG)	RESERVOIR CAPACITY (C.C.)	USABLE OIL CAPACITY (C.C.)	A (MM)	B (MM)	C (MM)	D (MM)	E (MM)	F (MM)	G (MM)	H (MM)	J (MM)	WEIGHT (KG)
AP1600S	7-10	1600	1300	207	152	114	244	129	90	3/8"-NPT	-	228	7.3
AP1600D	7-10	1600	1300	207	152	114	244	129	98	3/8"-NPT	304	228	9.3

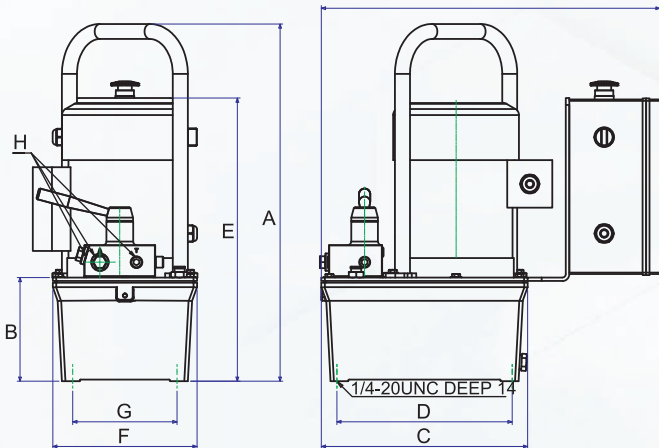
ELECTRIC PUMPS MODEL : EP13 SERIES

ELECTRIC PUMPS, 3 LITER,
700 BAR/10,000psi

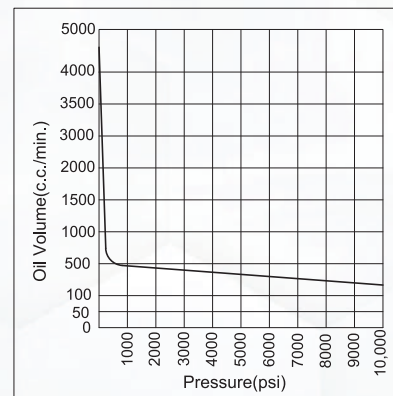
EP13S-EP13D

FEATURES

- Original pumps are built with 1/2 HP, 220V, 50/60Hz, Single phases universal brushless motor.
- Internal relief valve (700 bars) protects the components and work safety.
- Pumps are included with 24V, 3 meters remote control cord.
- Quiet pumps comply OSHA noise limitation (80dBA at 700bar).
- EP13D specially designed for double-acting cylinders without the need for additional control valve and adapters.
- Conform to CE standards.
- Both models are available with Solenoid Valve version.



EP13



SPECIFICATIONS

MODEL NO.	ACTING	RPM 50/60 HZ	RESERVOIR CAPACITY (C.C.)	USABLE OIL CAPACITY (C.C.)	MOTOR	MAX. PRESSURE OUTPUT (PSI)	VALVE		OIL DEL. (C.C./MIN. @)*			
							TYPE	FUNCTION	0(Psi)	100(Psi)	5000(Psi)	10000(Psi)
EP13S EP13SS*	Single	2860/3450	3,000	2,400	0.45 kW 110V / 220V	10,000	2 Position / 2 Way	Hold /Retract	4,000	2,800	330	280
EP13D EP13DS*	Double	2860/3450	3,000	2,400	50 / 60 Hz Single Phase	10,000	3 Position / 4 Way	Adv./Hold /Retract	4,000	2,800	330	280

MODEL NO.	A (MM)	B (MM)	C (MM)	D (MM)	E (MM)	F (MM)	G (MM)	H	J (MM)	WEIGHT (KG)
EP13 Series	511.5	148.5	295.5	251	406	206.5	149.4	3/8"-NPT	485	27

* Solenoid Valve version.

** The weight is excluding the hydraulic oil.

ELECTRIC PUMPS MODEL : EP5100

USABLE OIL CAP. : 80L

OIL CAPACITY : 100L

FEATURES

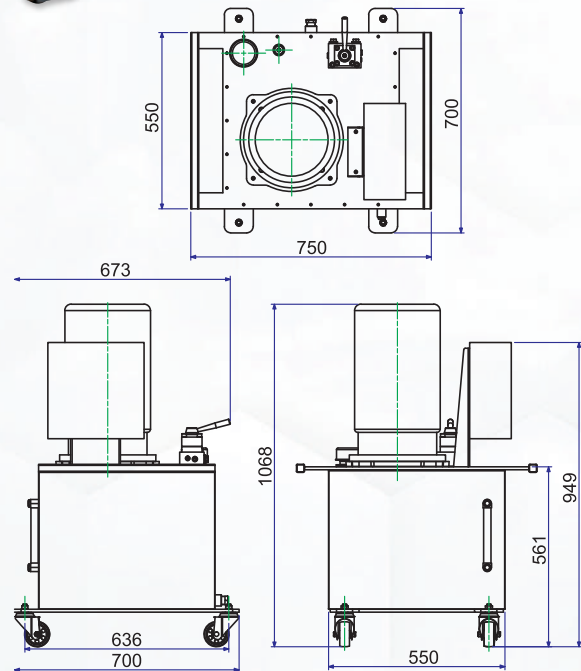
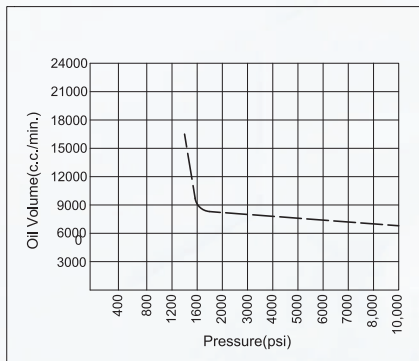
- Dual-speed high output pump delivers up to 16 l/min of oil.
- Low noise level of 73 - 80 dBA.
- Pump prewired at factory with 7.46kW, 380V, 50 Hz, 3 phase universal brushless motor.
- 24 volt control circuits on units with remote controls for user/operator safety.
- 3 phase motor with thermal overload protection and has all the electric components necessary to operate the pump.
- Power switch are 24 volts. EP5100D has a 4-way/3-position manual valve. EP5100DS has a 4-way/3-position solenoid valve with a 24 volt remote switch.
- 100L (80L usable) reservoir has a low oil level sight gauge.

EP5100D

EP5100DS



EP5100



SPECIFICATIONS

MODEL NO.	RPM	RESERVOIR CAPACITY (LITER)	USABLE OIL CAPACITY (LITER)	MOTOR	MAX.PRESSURE OUTPUT (PSI)	AMP DRAW @10,000PSI	VALVE		OIL DEL. (LITER/ MIN. @)*			
							TYPE	FUNCTION	220(PSI)	1300(PSI)	5000(PSI)	10000(PSI)
EP5100D	1437	100	80	7.46 kW /380 V	10,000	6	3 Position / 4 Way	Adv./Hold /Retract	16	14	6	5.6
EP5100DS				50 Hz / 3 phase								

MODEL NO.	A (MM)	B (MM)	C (MM)	D (MM)	E (MM)	F (MM)	WEIGHT* (KG)
EP5100 Series	1069	561	550	700	636	750	240

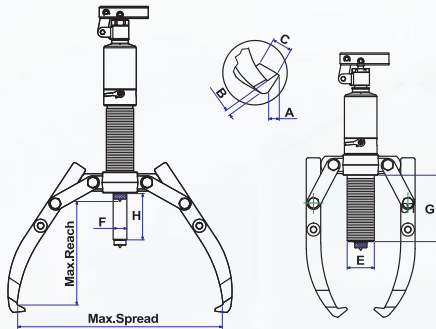
* The weight is excluding the hydraulic oil.

HYDRAULIC PULLERS

HYDRAULIC PULLERS MODEL : PM SERIES

FEATURES

- Exchangeable 2 or 3 arm combination puller is very practical and economical.
- 360° Rotary Socket.
- Self-contained hydraulic pump and puller body with integral safety valve.
- Spring loaded live centering nut for easy job (removable).
- Four stages of foldable & removable handle saves the handle force during operation.
- Patented design of two stages stroking for PM2000 & PM3000, the first stage being as fast stroking for quickly connecting with object, and the second stage being as high hydraulic output for pulling job.
- The extension rods can be used for extra reach when neces sary.



ACCESSORIES

MODEL NO.	PART NO.	LENGTH OF LONG ARM (MM)	MAX. REACH	MAX. SPREAD
PM400	295	222	295	300
PM600	335	260	335	363
PM800	395	308	395	445
PM1200	435	340	435	420
PM2000	555	428	555	540
PM3000	555	428	555	620

SPECIFICATIONS

CAPACITY	MODEL NO.	REACH (MAX. MM)	SPREAD (MAX. MM)	STROKE (MM)	PUMP TIP (MM)			JAW TIP (MM)			WEIGHT (KG)
				H	E	F	G	A	B	C	
4 Ton	PM400	185	255	60	42	22	84	11	6	22	8.3
6 Ton	PM600	220	330	70	45	23	94	13	10	22	8.5
8 Ton	PM800	230	350	85	50	25	122	11	10	25	12.0
12 Ton	PM1200	270	375	85	60	28	118	14	10	29	17.2
20 Ton	PM2000	360	520	111	80	40	160	20	27	33	38.2
30 Ton	PM3000	360	550	111	98	50	155	20	27	38	50.6

PM400-PM3000

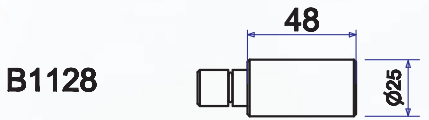


HYDRAULIC PULLERS : PME SERIES

FEATURES

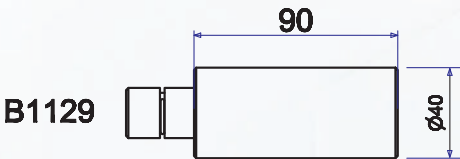
- Self-centering and fast-acting jaws are absolutely user-friendly for operating.
- 360* Rotary socket can be operated in all direction.
- The extension rods can be used for extra reach when necessary.
- The self-contained hydraulic pump provide easy job without the necessary of additaional cylinder, pump & hose.
- The integral safety valve can prevent the puller being overloaded
- The convertible 2 / 3 way hydraulic easy puller provide the best and cost saving choice for the users.

PME400-PME3000



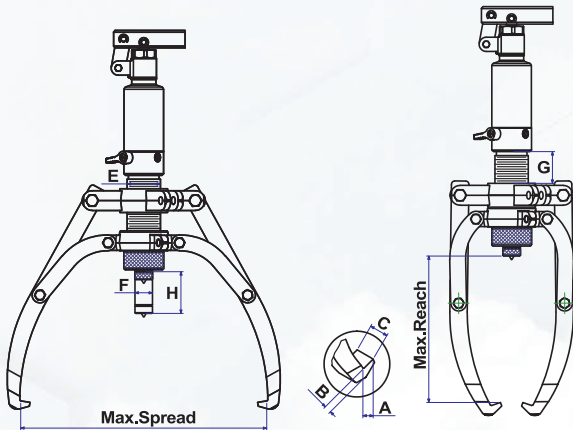
B1128

Extension Rod for 4, 6, 8 & 12 Tons Pullers



B1129

Extension Rod for 20 & 30 Tons Pullers



PULLER ASSEMBLED PACKAGE

SPECIFICATIONS

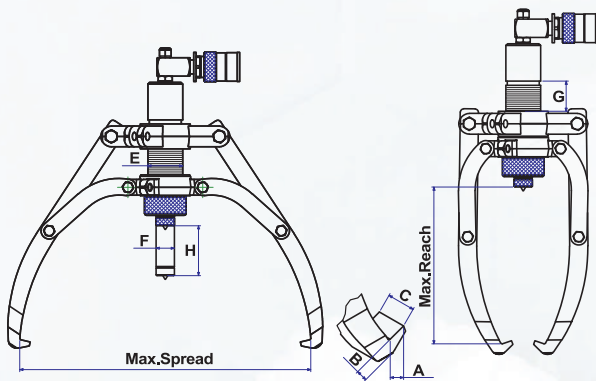
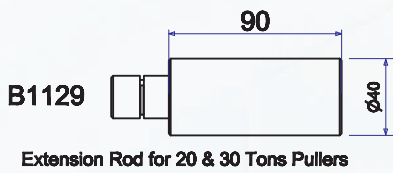
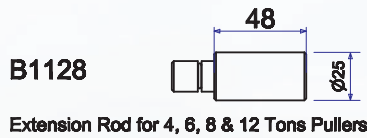
CAPACITY	MODEL NO.	MAX. SPREAD (MM)	MIN. REACH (MM)	MAX. REACH (MM)	STROKE (MM)	PUMP TIP (MM)			JAW TIP (MM)			WEIGHT (KG)
						H	E	F	G	A	B	
4 Ton	PME400	315	150	190	60	42	22	40	13	10	22	9.3
6 Ton	PME600	390	185	230	70	45	23	50	13	10	22	9.8
8 Ton	PME800	460	225	280	85	50	25	70	13	13	27.5	15.3
12 Ton	PME1200	515	240	300	85	60	28	62	15	16.5	29	18.4
20 Ton	PME2000	520	250	325	111	80	40	85	18	20	33	46.0
30 Ton	PME3000	620	330	415	111	98	50	70	18	20	38	61.8

HYDRAULIC PULLERS : PRE SERIES

FEATURES

- Self-centering...and fast-acting jaws..are..absolutely user-friendly for operating.
- 360 Rotary socket can be operated in all direction.
- The extension rods can be used for extra reach when necessary.
- The integral safety valve can prevent the puller being overloaded.
- The convertible 2 / 3 way hydraulic easy puller provide the best and cost saving choice for the users.
- Suggested Hand Pumps:
 4 ~ 12 Ton: PB600BG or AHP701BG
 20 ~ 30 Ton: PB700BG or AHP702BG

PRE400-PRE3000



SPECIFICATIONS

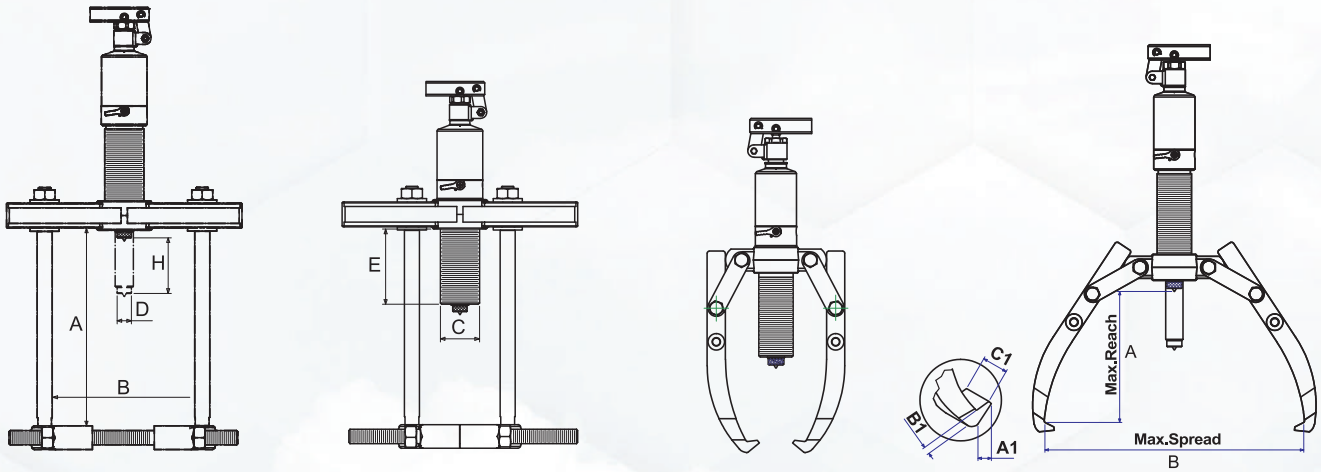
CAPACITY	MODEL NO.	MAX. SPREAD (MM)	MIN. REACH (MM)	MIN. SPREAD (MM)	MAX. REACH (MM)	STROKE (MM)	PUMP TIP (MM)			JAW TIP (MM)			WEIGHT (KG)
							H	E	F	G	A	B	
4 Ton	PRE400	315	150	83	190	60	42	22	40	13	10	22	7.4
8 Ton	PRE800	460	225	110	280	85	50	25	70	13	13	27.5	14.0
12 Ton	PRE1200	515	240	120	300	85	60	28	62	15	16.5	29	17.0
20 Ton	PRE2000	520	250	160	325	111	80	40	85	20	27	33	36.7
30 Ton	PRE3000	620	330	190	415	111	98	50	70	20	27	38	56.5

PACKAGE MODEL : PM SERIES

FEATURES

- Four stages of foldable & removable handle saves the handle force during operation.
- 360° Rotary Socket.
- Self-contained hydraulic pump and puller body with integral safety valve.
- Spring loaded live centering nut for easy job (removable).
- 2 jaws puller cross head with manganous-phosphate plated for rust proof and durability.
- Package including puller body, jaw assembly, cross bearing, extension bar and blow molded case for practical and safe works.

PM420-PM1220



SPECIFICATIONS

CAPACITY	MODEL NO.	REACH (MAX. MM)	SPREAD (MAX. MM)	STROKE (MM)	PUMP TIP (MM)			JAW TIP (MM)			WEIGHT (KG)
		A	B		H	C	D	E	A1	B1	
4 Ton	PM420	185/224	255/145	60	42	22	84	11	6	22	12.4
6 Ton	PM620	220/255	330/220	70	45	23	90	13	10	22	17.0
8 Ton	PM820	230/255	350/230	85	50	25	122	11	10	25	20.0
12 Ton	PM1220	270/298	375/310	85	60	28	115	14	10	29	17.2 /20.6 (puller / acc.set)

PUSH PULLER / THREE-IN-ONE MODEL : PD SERIES AND MD SERIES

USER-FRIENDLY

- Unique & Patented double action pump body to provide the pushing and pulling force.
- Unique jaw design for installing and outer pulling without removing and changing.
- Three jaw structure provides the even and constant force whenever for installing, outer pulling and inner pulling.
- The extension bars can be used where necessary for reach.
- Self-centering design on inner puller provides the even force and prevent the jaws from sliding off during operating.

SAFE

- The built-in safety valve prevents the user being harmed and work object being damaged by rated pressure which can not be reset or adjusted.
- Most parts are forged SCM440 alloy steel, creating a durable and safe product.

COST SAVING

- The Three-in-One design reduces tool-reset time and duration of operation.
- This push puller is ideal for installing and dismantling a wide variety of press-fit parts, including bushings, wheels, bearings, gears and pulleys.



INNER PULLING



PUSHING

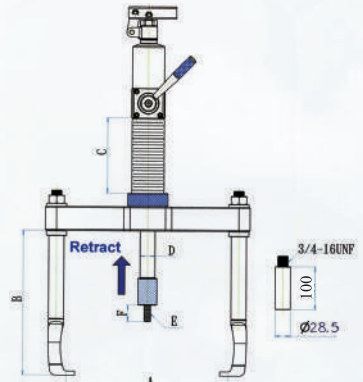
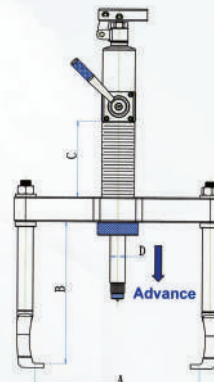


OUTER PULLING

PD12080



PDR12080



100 & 150 TON EASY PULLER MODEL : PME SERIES

Simple & Easy, User-Friendly,
Safety and Cost Saving - Our Goals Always!

FEATURES

- Double acting hydraulic system for holding, opening & closing jaws for safe & secure grip on work object always.
- Self-centering design keeps puller jaws clamp work object evenly and automatically.
- Electrical Hydraulic Pump advances and retracts the pushing cylinder only to prevent operating errors from happening.
- The easy jaw head adjusting system prevents puller jaws from sliding and spring off the work object being pulled always.
- Puller can be converted into 2 or 3-WAY configurations.
- Puller can be adjusted with 5 degree up/down of puller centerline for precisely positioning.

PME100T-PME150T



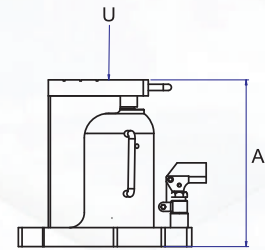
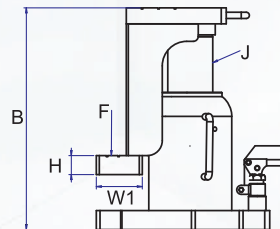
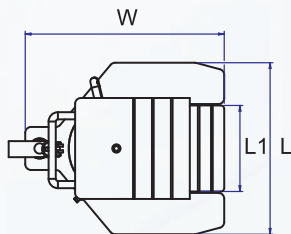
- The cart swivel castors provide movement of cart easily.
- Electrical Hydraulic Pump is two stage version; the low pressure stage provides the fast stroking to save time ; the high pressure stage is controlled by remote switch.
- 100 Ton Cylinder is 2-stages, spring return type with a maximum working pressure of 10,000 psi.
- Five extension adapters are standard attachments for the needs on extra stroke.
- Integrated Control System for operating Lift and Push easily and efficiently by Electric Pump only.
(Equipment on requesting)

TOE JACKS

TOE SERIES

FEATURES

- Heat treated & chrome plated hydraulic rod provide longer seal life and optimum performance.
- Internal safety valve prevents toe jack from being used beyond its rated capacity.
- Housing welding onto the forged base ensures to be free of leakage problem.
- High strength Toe-Lift for long life use.
- Low toe heights fit in tight clearances.
- Swivel sockets for easy operation.
- Can be operated quickly by hand without a loading. Removable handle saves the handle force during operation.
- Max. Working Pressure 700 bar/ 10,000 psi



MODEL	TOP CAP. U(TONS)	TOE-LIFT CAP. F(TONS)	STROKE (MM)	MIN. HEIGHT A(MM)	MAX. HEIGHT B(MM)	PISTON ROD DIA. J(MM)	BASE DIMENSIONS LXW(MM)	HEIGHT H(MM)	TOE-LIFT L1XW1(MM)	WEIGHT (KGS)
TOE-025	2.5	1.2	100	194	294	19	140X190	19	65X50	7.8
TOE-040	4	2	110	204	314	25	150X200	19	65X50	9.0
TOE-060	6	3	110	212	322	36	160X217	19	65X50	11.3
TOE-100	10	5	130	258	388	40	189X242	22	75X55	17
TOE-160	16	8	131	275	406	52	211X256	25	90X55	25.7
TOE-200	20	10	140	303	443	56	228X274	25	100X60	33.1
TOE-300	30	15	147	322	469	70	259X305	32	110X60	52
TOE-500	50	25	148	333	481	90	299X347	38	150X60	84

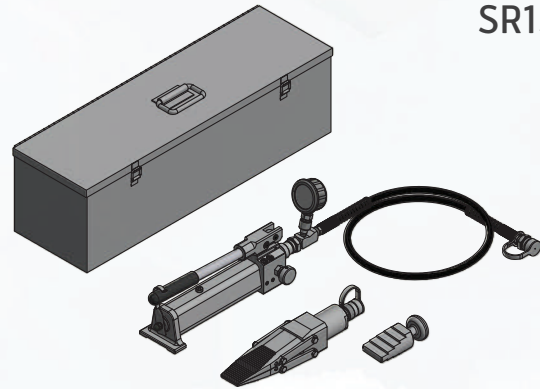
HYDRAULIC SPREADERS

MODEL SR SERIES AND TL SERIES

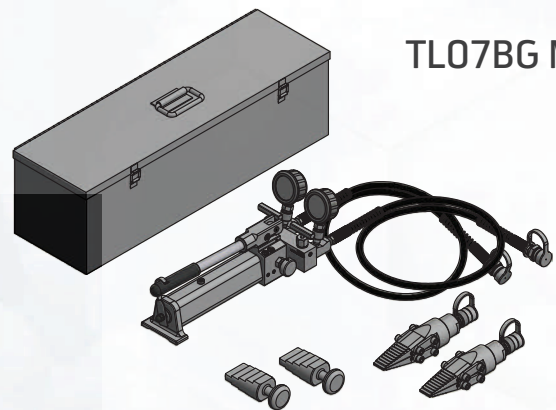
FEATURES

- Ideal for numerous industrial maintenance repair jobs.
- Accurate height adjustments (for instance shaft alignment) can easily be executed by one person.
- Easy, light and very practical to use.
- Particularly suitable when available space is very limited, from 5 to 40 mm.
- Due to the reduced thickness of the jaws, made of high quality hardened steel, these multi-functional wedges can be used for jobs where working space is extremely limited.

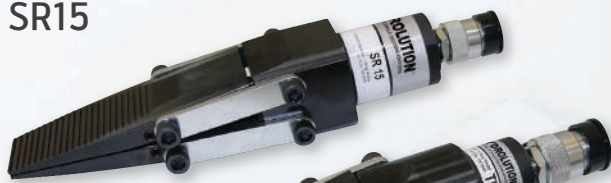
SR15BG



TL07BG MAX



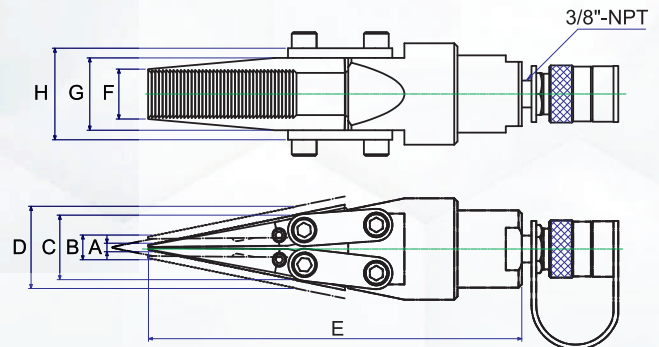
SR15



TL07



SR07



SPECIFICATIONS

MODEL NO.	CAPACITY TONS	SPREAD (MM)		STROKE (MM)	C (MM)	D (MM)	E (MM)	F (MM)	G (MM)	H (MM)	WEIGHT (KGS)
		MIN - A	MAX - B								
SR07	15	5	15	25	40	50	232	31	45	57	3.5
SR07BG	15	5	15	25	40	50	232	31	45	57	14.5
SR07BG MAX	15 x 2	5	15	25	40	50	232	31	45	57	27.0
TL07	15	5	15	25	36	46	232	31	45	57	3.5
TL07BG	15	5	15	25	36	46	232	31	45	57	14.5
TL07BG MAX	15 x 2	5	15	25	36	46	232	31	45	57	27.0
SR15	25	7	23	65	42.5	59	342	50.5	70	82	8.0
SR15BG	25	7	23	65	42.5	59	342	50.5	70	82	24.0
SR15BG MAX	25 x 2	7	23	65	42.5	59	342	50.5	70	82	36.0

HYDRAULIC LIFTING WEDGE

MODEL HLW18T-HLW18TP

LIFTING FORCE

- 10,000 psi (700 bar) = 18 Ton
- 10,000 psi (700 bar) = 36 Ton in pair



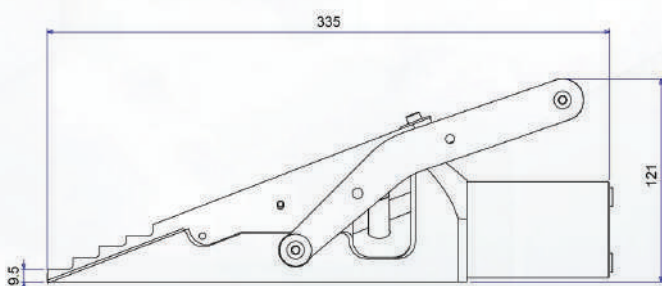
KIT COMPONENTS

HLW18T	HLW18TM	HLW18TP
1 x Wedgehead	1 x Wedgehead	2 x Wedgehead
1 x 700 bar (10,000 psi) Hydraulic Cylinder 1 x Safety Block	1 x 700 bar (10,000 psi) Hydraulic Cylinder 1 x Safety Block	2 x 700 bar (10,000 psi) Hydraulic Cylinder
1 x Safety Block	1 x Safety Block	2 x Safety Blocks
1 x Stepped Block	1 x Stepped Block	2 x Stepped Blocks
1 x Hex Key	1 x Hex Key	1 x Hex Key
1 x Countersunk Screw	1 x Countersunk Screw	2 x Countersunk Screw
1 x Cardboard Packaging	1 x Carry Case	1 x Carry Case

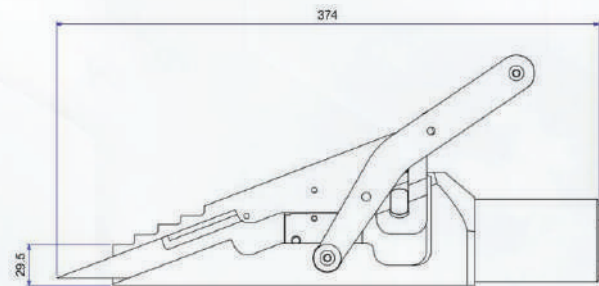
WEIGHTS AND DIMENSIONS

Wedge with Hydraulic Cylinder: 8.5 kg	Wedge with Hydraulic Cylinder: 8.5 kg	Wedge with Hydraulic Cylinder: 8.5 kg
Safety Block: 0.5 kg	Carry Case: 6 kg	Carry Case: 6 kg
Stepped Block = 0.8 kg	Gross weight: 15.8 kg	Gross weight: 25.6 kg
Gross weight: 9.8 kg	Carry Case Dimensions: 580 mm x 340 mm x 180 mm	Carry Case Dimensions: 580 mm x 340 mm x 180 mm
Packaging Dimensions: 230 mm x 190 mm x 365 mm		

TOOL DIMENSIONS - CLOSED



TOOL DIMENSIONS - OPEN

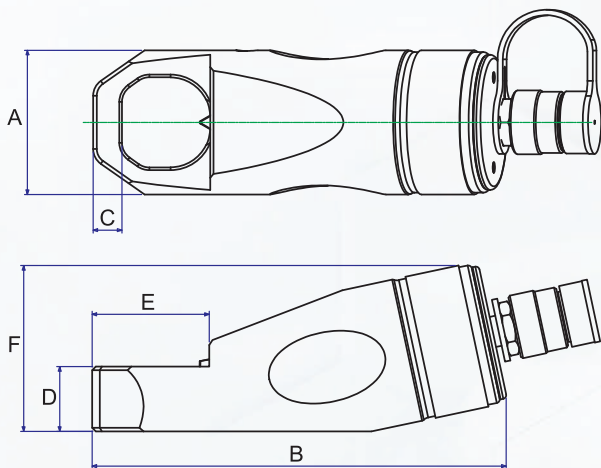


NUT SPLITTERS

NUT SPLITTERS 10-50 TON MODEL : HNS SERIES

FEATURES

- Compact design used in confined space with enough force to split the rusted nuts.
- All models feature a rugged one-piece cutting frame coupled to a heavy-duty hydraulic cylinder.
- Specially designed " tool steel " cutter blade cuts the nut to the precise point where it cracks.
- Unique angled head design to keep full contact with the nut being penetrated.
- Unique angled cutter blade with radius to have the greater resistance to cutting and breaking nuts.
- 5 popular models applicable to cover the most range of nuts.



HNS5060



HNS2432

HNS3241



SPECIFICATIONS

MODEL NO.	HEXAGON NUT RANGE (MM)	BOLT RANGE (MM)	CAPACITY (TON)	OIL CAPACITY (C.C.)	DIMENSIONS(IN)						WEIGHT (KGS)
					A(MM)	B(MM)	C(MM)	D(MM)	E(MM)	F(MM)	
HNS1924	19-24	M12-M16	10	18	60	171.5	10	25	40	68	2.6
HNS2432	24-32	M16-M22	15	40	70	192	13	30	52	79	3.6
HNS3241	32-41	M22-M27	20	68	80	230	16	36	65	92	5.5
HNS4150	41-50	M27-M33	35	150	100	286	21	45	76	116	11.2
HNS5060	50-60	M33-M39	50	250	117	321	24	54.5	92	134	15.1

Notes: The Hardness of Nut Material must not exceed HRC-44.
Should not be used on stainless steel nuts and/or square shape nuts.

HYDRAULIC FLANGE SPREADER

MODEL SH15T

SPREADING FORCE

- With 700 bar (10,000 psi) hydraulic pressure applied :
15.5 Ton per tool
- It is recommended that tools are used in pair giving :
2 x 15.5 Ton = 31 Ton
- Tool Weight = 7.0 kg

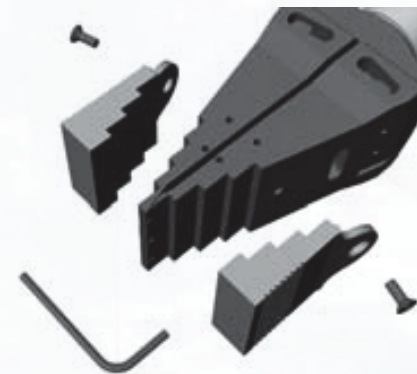


KIT COMPONENTS

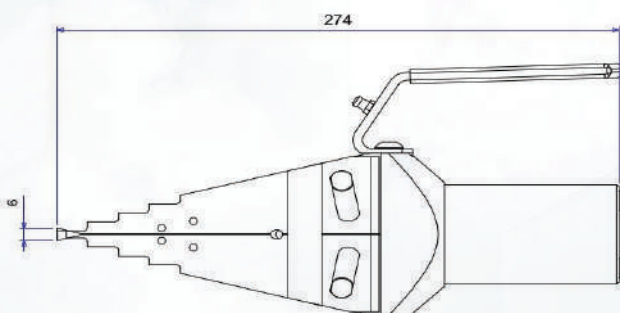
SH15T
1 x Wedgehead
1 x 700 bar (10,000 psi) Hydraulic Cylinder
1 x Safety Block
1 x Pair of Stepped Blocks
1 x Hex Key
1 x Carton Packaging

WEIGHTS AND DIMENSIONS

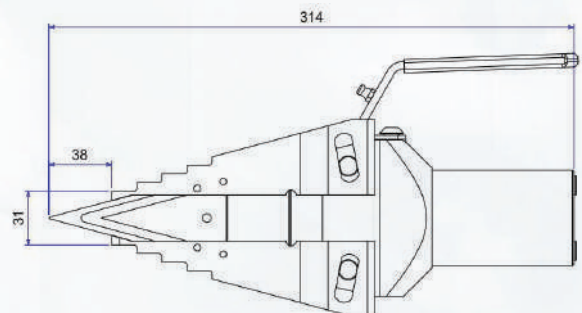
Tool weight 7.0kg
Safety Block 0.38 kg
Gross weight: 8.95 kg
Packaging Dimensions 320 mm x 180 mm x 220 mm



TOOL DIMENSIONS - CLOSED



TOOL DIMENSIONS - OPEN



MANUFACTURING BEVELING MACHINE

OD-MOUNTED MODEL : OCE, OCP, OCH

FEATURES

Lower axial and radial clearance, light weight suitable for working at narrow and complicated site. Can separate to two half, it's easy for the pipe when two end not open. The machines do the cutting and beveling simultaneously. The tool not only can process carbon steel, stainless steel and alloy pipe with U, V welding seam but also can process convex flange welded.

APPLICATION RANGE

They are widely used in the fields of petroleum, chemical, natural gas, power supply construction, boiler and nuclear power, such as the project of west gas transporting to east China.

DRIVING TYPE

- Electric-OCE
- Pneumatic-OCP
- Hydraulic-OCH
- Numerical Controller-OCS
- Power Supply : 380V 3PH 50/60HZ 10MPa@25L/Min
- Powerful drive, High efficiency Stable Performance Low noise Adjustable speed Ideal for heavy wall & large size pipe. (Non-standard voltage can be customized)

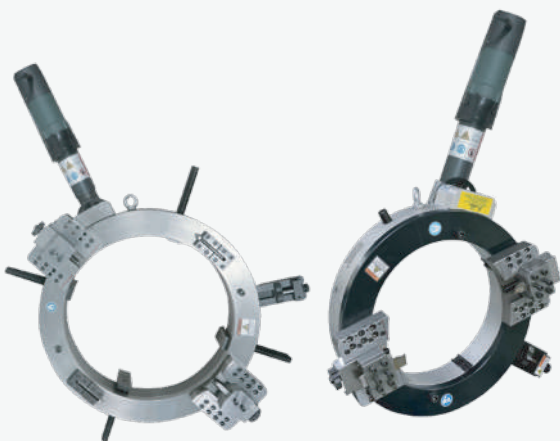
MAIN PERFORMANCE OF PNEUMATIC PRODUCTS

- Power Supply: 0.8-1.0MPa@1000-2000L/min
- Explosion Proof
- Stable Performance
- Simple structure makes easy to maintenance
- Occasionally overload won't burn

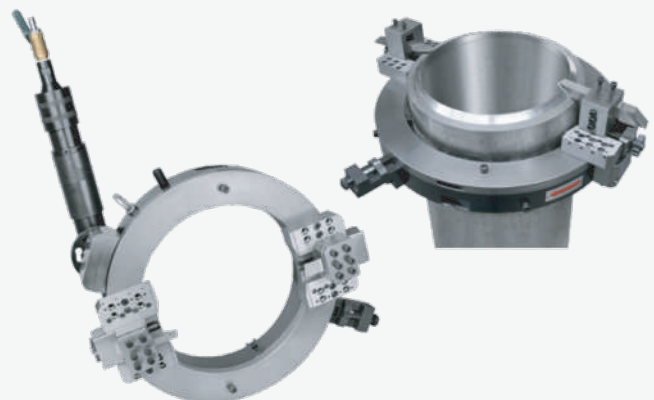
OCH(HYDRAULIC)



OCE(ELECTRIC)



OCP(PNEUMATIC)



MOUNTED PIPE CUTTING AND BEVELING MACHINE CHUCK TYPE SELF-CENTERING MODEL : SOCE, SOCP

Adopt high strength & precision split frame ring structure, apply for cut and bevel work for different pipe, especially for batch working of cutting and beveling, get the high efficiency. Various of driven options: pneumatic, electric or hydraulic.

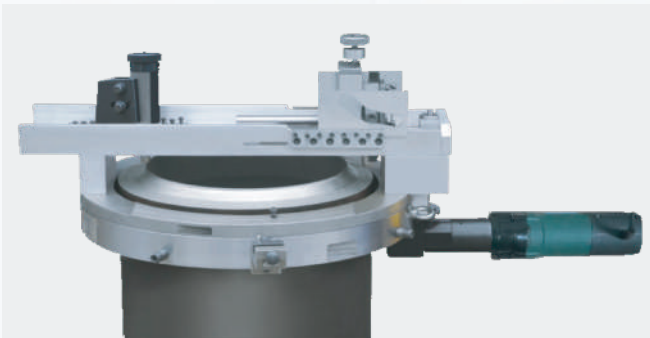
FEATURES

- Self-centering, no need adjust the concentricity & perpendicularity manually. Four clamp install synchronously and high effect.
- New clamping type, save the step of replace expending block.
- Adopt new synchronous feeding mechanism, feeding uniformity, tool bits has longer working life.
- Easy set-up, operation and maintain.
- Cutting & beveling finished at same time, high working effective.
- Cold working, no spark, won't make the material affected.
- Perfect working precision, no burrs.
- Well-adapted, install split, you can make the speed adjust depend on the working conditions.

SOCE



SOCP



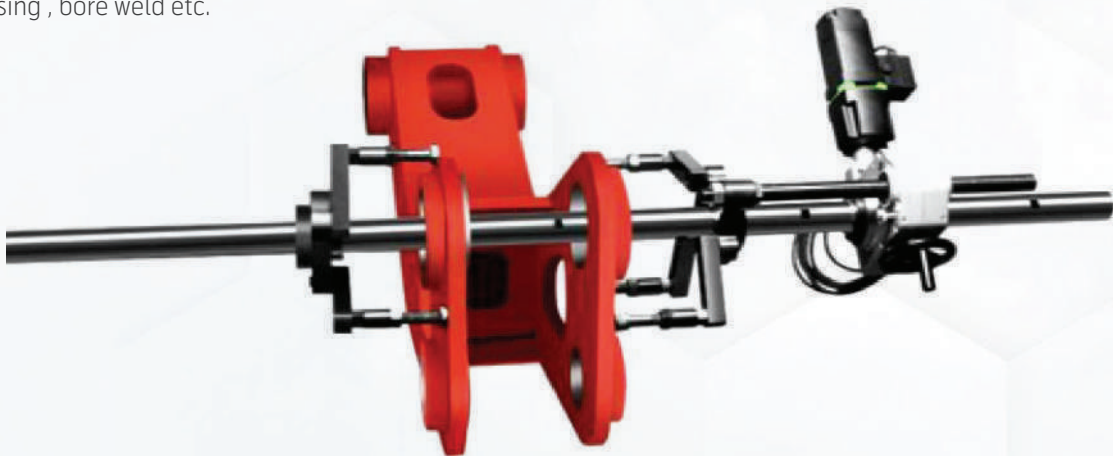
MODEL NO.	SPEC	CAPACITY (OD MM)		WALL THICKNESS (MM)	ROTATION SPEED
		(MM)	OD (INCH)		
SOCE,	168	Φ 50-168	2"-6"	≤30	18r/min
	230	Φ 80-230	3"-8"	≤30	15r/min
	275	Φ 125-275	5"-10"	≤30	14r/min
SOCP,	305	Φ 150-305	6"-10"	≤30	13r/min
	325	Φ 168-325	6"-12"	≤30	13r/min
SOCH,	377	Φ 219-377	8"-14"	≤30	12r/min
	426	Φ 273-426	10"-16"	≤30	12r/min
SOCM	457	Φ 300-457	12"-18"	≤30	12r/min
	508	Φ 355-508	14"-20"	≤30	12r/min
	610	Φ 457-610	18"-24"	≤30	12r/min

PORTABLE MULTI-FUNCTION LINE BORING MACHINE

The Line Boring is a high-efficiency series of machine tools. It is special equipment for processing deep holes in cylinders and hydraulic cylinders. This machine is equipped with a rotating structure design and automatic feeding device with high precision. The machine is widely used in the processing and repair of excavators, loaders, crawler cranes and large marine cranes.

FEATURES

- Alloy Steel Body, Compact structure, Light weight, easy to carry out.
- Small working radius, it can be adapted to variety of the narrow space, high-altitude complex processing needs.
- Boring bar is made of high-intensity alloy steel, high strength
- Can selected different connect head, can achieve different processing. For example, pipe face processing, flanges face processing , bore weld etc.



MODEL NO.	SPEC	(MM)	OD (INCH)	ROTATION SPEED
LBE	50	55-400 mm	0-118r/min	2500/3000/3500/4000/4500 mm
	60	65-600 mm	0-118r/min	
	90	100-800 mm	0-78r/min	
LBH	110	180-900 mm	0-62r/min	
	150	220-1000 mm	0-55r/min	
LBS	200	380-1200 mm	0-38 r/min	
	300	460-1600 mm	0-28 r/min	

Note : Non-Standard machines are available according to customer's requirement.

HYDRAULIC FIXED FLANGE AND ROTATIONAL ALIGNMENT TOOL

MODEL H9TFE

ALIGNING FORCE

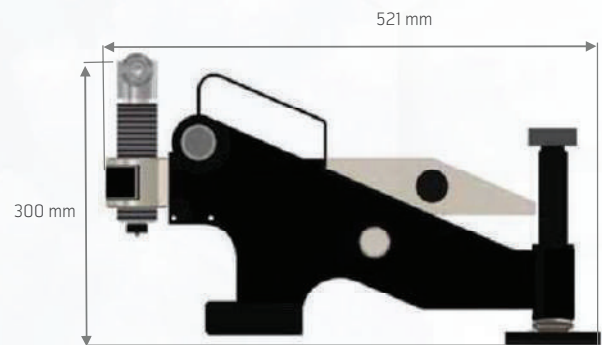
- 9 Ton
- Tool Weight = 14.5 kg

KIT COMPONENTS

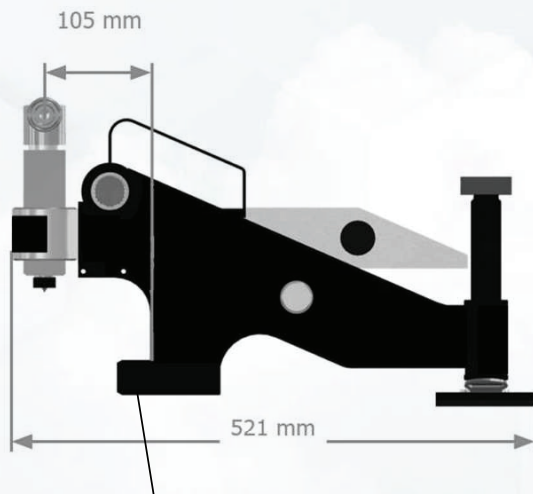
H9TFE
1 x H9TFE Tool
1 x Ratchet Strap
1 x Molding Case

WEIGHTS AND DIMENSIONS

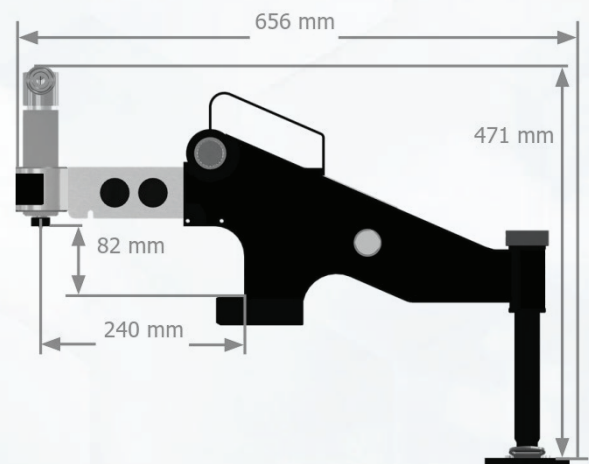
Tool weight: 14.5 kg
Molding Case: 2.5 kg
Gross weight: 17.68 kg
Molding Case Dimensions: 600 mm x 360 mm x 140 mm



MINIMUM EXTENSION



MAXIMUM EXTENSION

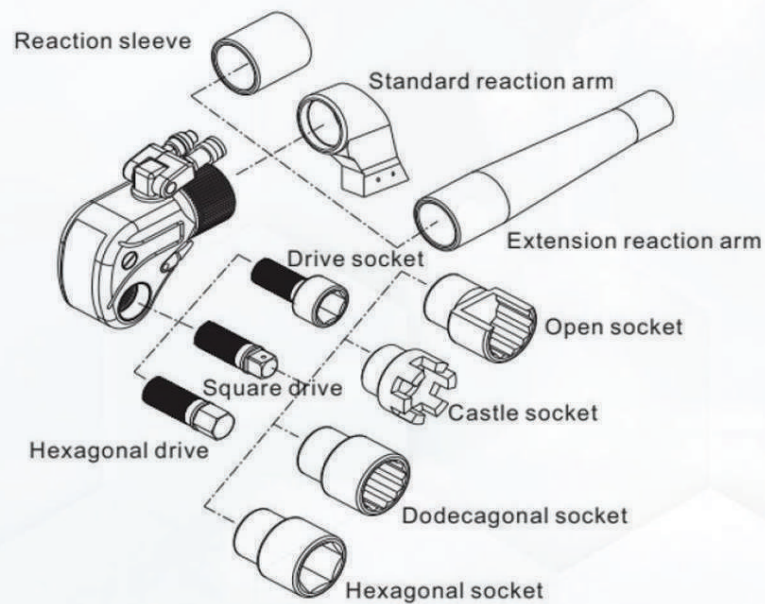


Minimum applicable Bolt Hole Diameter 35.5 mm (1.40")

SQUARE DRIVE HYDRAULIC TORQUE WRENCH

MODEL MXTD SERIES

- 70MPa max working pressure
- Torque accuracy up to +3%
- 12 models from 185Nm-150000Nm
- 360X180 degree swivel joint, no space limitation
- 360 degree reaction arm
- Al-Ti alloy material, integrated design
- Square drive and reaction arm can be customized.



LOW PROFILE HYDRAULIC TORQUE WRENCH

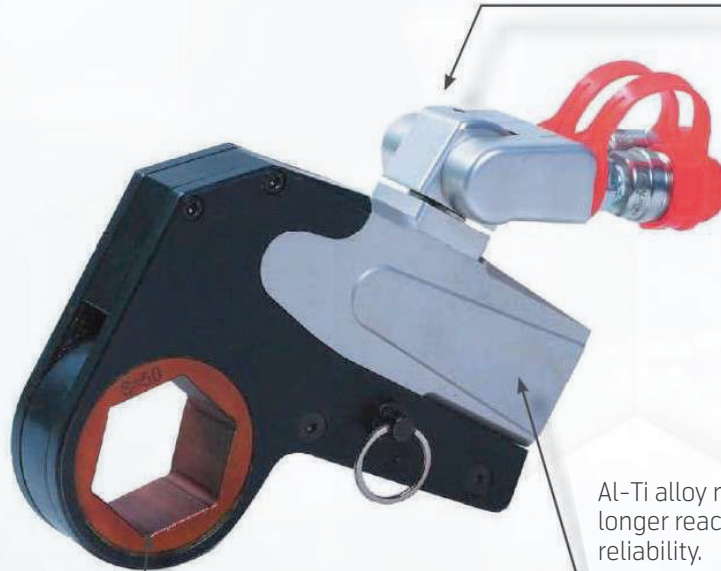
MODEL WHCD SERIES

- 70MPa max working pressure
- Torque repeatability up to 3%
- 10 models with the ranges from 233-140000Nm.
- 360x180 degree swivel joints allow free operation without space limitation.
- Al-Ti alloy material, integral design, longer reaction arm and higher reliability.
- Light weight
- Ratchet link can be changed.



Optional CEJN self-locking quick coupler C701EL

Flat cylinder design, suitable for different conditions. 360x180 swivel joint allows free operation without space limitation.



Al-Ti alloy material, integral design, longer reaction arm and higher reliability.

Good head space and compact design, suitable for limited space.

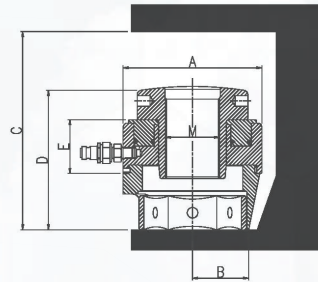
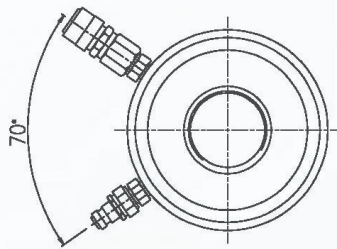


SINGLE STAGE HYDRAULIC BOLT TENSIONER

MODEL HLD SERIES

FEATURES

- Maximum working pressure 150Mpa
- Compact design and easy maintenance
- Small size and light weight
- Easy to replace the rod
- Commonly used in petrochemical industry



MODEL	BOLT DIAMETER		MAX LOAD	OIL PRESSURE AREA	WEIGHT	A	B	C	D	E	F
	INCH	MM									
HLD1		16	226	1506	3.5	73	24	110	74	45	49
	3/4	18	226	1506	3.5	73	24	110	74	45	49
		20	226	1506	3.5	73.5	27	110	74	45	49.5
	7/8	22	226	1506	3	73.5	27	115	74	45	53
	1	24	226	1506	3	73.5	30	125	78	45	58.5
	1 1/8	27	226	3031	3	73.5	32	130	78	45	63.5
HLD2		30	455	3031	5	102	30	150	90	54	69
	1 1/4	33	455	3031	5	102	34	150	90	54	72
	1 3/8	36	455	3031	5	102	36	160	95	54	78
	1 1/2	39	455	5357	5	102	38	170	100	54	80
HLD3	1 1/2	39	803	5357	9	133	42	175	95	56	83.5
	1 5/8	42	803	5357	9	133	42	185	100	56	92.5
	1 3/4	45	803	5357	9	133	44	195	103	56	98
	1 7/8	48	803	5357	9	133	46	205	107	56	101
	2	52	803	8591	9	133	48	210	112	56	106
HLD4	1 7/8	48	1288	8591	15	163	50	205	105	58	108
	2	52	1288	8591	15	163	52	215	108	58	108
	2 1/4	56	1288	8591	15	163	54	235	117	58	118.5
		60	1288	8591	15	163	54	238	120	58	127
	2 1/2	64	1288	13188	15	163	58	254	129	58	130.5
HLD5	2 1/2	64	1978	13188	25	193	64	254	125	60	130.5
		68	1978	13188	25	193	72	258	130	60	138
	2 3/4	72	1978	18114	25	193	72	258	130	60	143
	3	76	1978	18114	25	193	74	258	141	60	153
HLD6	3	76	2717	18114	44	233	76	260	146	64	153
		80	2717	18114	44	233	76	264	146	64	155.5
	3 1/4	85	2717	18114	44	233	78	272	148	64	165.5
	3 1/2	90	2717	1506	44	233	78	280	154	64	174.5
	3 3/4	95	2717	13188	40.5	233	99	300	168	64	189.5
	4	100	2717	18114	40.5	233	105	305	172	64	200

NEW STYLE ELECTRIC PUMP FOR HYDRAULIC WRENCH

MODEL SP304 SERIES

FEATURES

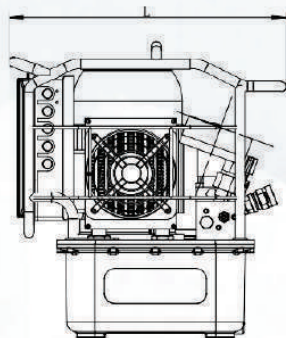
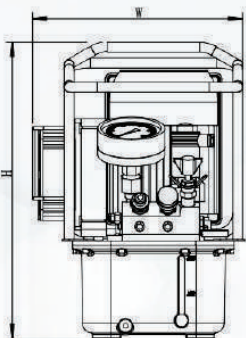
- High efficiency 3 speed flow pressure design, perfect simulation of manual operation, fast speed when light load, low speed when heavy load, the bolt tightening is more precise.
- It can drive 2 hydraulic wrenches simultaneously or 4 if requested.
- Al-Ti alloy pump body, light weight and easy to carry.
- 40-700 bar adjustable output pressure.
- Brushless high-power motor, easy maintenance and long life, with starting capacitor, able to start with load, simple operation.

High performance radiator, the fan starts automatically when oil temperature reaches 35 degree, to guarantee long time working.

High performance radiator, the fan starts automatically when oil temperature reaches 35 degree, to guarantee long time working.

Casting aluminium alloy oil tank, zero leakage, very light and strong.

Embedded oil level gauge, very easy to check the oil level.



Optional 8 port manifold

TECHNICAL PARAMETERS

MODEL	OUTPUT PORT	POWER	PRESSURE (MPA)			FLOW(U/MIN)			OIL TANK (L)	DIMENSION (MM)	WEIGHT (KG)
			HIGH	MEDIUM	LOW	HIGH	MEDIUM	LOW			
SP304-2	4X1/4 NPT	220V 1.1KW	70	32	6	0.8	1.6	8	8	394*300*420	26
SP304-4	8X1/4 NPT	220V 1.1KW	70	32	6	0.8	1.6	8	8	394*300*420	26

STRAND JACKING SYSTEM



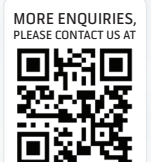
Strand Jacking System are the choice for clients seeking precise synchronous control with heavy lifting capacity in an economical, compact, and reliable foot print.

FEATURES

- Automated locking - unlocking operation.
- Strand Preloading System.
- Two strand sizes: 0.62 in (15.7 mm) and 0.71 in (18 mm).
- Telescopic strand guide pipes prevent bird caging.
- Lifting anchor are included with all strand jacks.
- Lifting/Pulling Speed 4, 6, 8 10m/hr (Able to custom to project requirement).



PART NUMBER	CAPACITY (TON)	STROKE (MM)
HSJ-030500	30	500
HSJ-045500	45	500
HSJ-060500	60	500
HSJ-100500	100	500
HSJ-180500	180	500
HSJ-200500	200	500
HSJ-300500	300	500
HSJ-500500	500	500
HSJ-650500	650	500
HSJ-850500	850	500
HSJ-1000500	1000	500
HSJ-1250500	1250	500



BATTERY SOLUTION

TRACTION BATTERY

Traction batteries are used in major electric vehicles such as forklifts. There are several brands of traction batteries which ensure a higher level of performance and longer life capacity. We guarantee to customer that we can provide more benefits in order to save our customer investment. Our products are made to suit the demands of your requirements, offering great values with sustainable reliability.



DEEP CYCLE BATTERY

Deep Cycle Batteries are one of the longest lasting in the industry! Deep Cycle Batteries come in 6V, 8V and 12V blocks of various capacities and are widely used in Golf Buggies, Electric Vehicles, Cleaning Machines, Scissors Lifts and Material Handling Equipment.



ROCKET TRACTION BATTERY



ISO9002 1993, Asia first
 ISO9001 1994~
 ISO14001 2000~
 TSI6949 2003~



BATTERY FOR COUNTERBALANCED FORKLIFT

BRAND	TYPICAL MODEL	TONNAGE	BATTERY TYPE	AH	VOLTAGE
Mitsubishi	FB15CA	1.5T	VCD400	400	48
	FB20CA	2.0T	VCD450	450	48
	FB25CA	2.5T	VCD500-580	500-580	48
	FB30CA	3.0T	VCD450	450	72
	FB15CB	1.5T	VCI440	440	48
	FB20CB	2.0T	85TX-13	572	48
	FB25CB	2.5T	85TX-13	572	48
Nissan	FPO1L15U	1.5T	VCD450	450	48
	QP02L20U	2.0T	VCD500-580	500-580	48
	QP02L25U	2.5T	VCD500-580	500-580	48
	PIB2L20U	2.0T	VCD500-580	500-580	48
	PIB2L25U	2.5T	VCD500-580	500-580	48

BRAND	TYPICAL MODEL	TONNAGE	BATTERY TYPE	AH	VOLTAGE
Nichiyu	FB10-15PN	1.0-1.5T	VCD400	400	48
	FB20PN	2.0T	VCD450	450	48
	FB25PN	2.5T	VCD500-580	500-580	48
	FB30PN	3.0T	VCD450	450	72
	FBL15	1.5T	VCD400	400	48
TCM	FB15H4	1.5T	VCD500	500	48
	FBL20-25	2.0-2.5T	VCD500-580	500-580	48
	FB30-6	3.0T	VCD450	450	72
	FB30-5	3.0T	VCE715	715	48

Other : SHINKO, HYSTER, HYUNDAI, JUMBO, LINDE, CRACK, DAEWOO, SUMITOMO, YALE, CROWN, BT contact sales representative for more detail.

ROCKET TRACTION BATTERY

BRAND	TYPICAL MODEL	TONNAGE	BATTERY TYPE	AH	VOLTAGE
Komatsu	FB10EX-7	1.0T	VCD400	400	48
	FB15EX-5,7	1.5T	VCD400-450	400-450	48
	FB15A-12	1.5T	VCI525	525	48
	FB20EX-8	2.0T	VCD500-580	500-580	48
	FB20A-12	2.0T	VCI525	525	48
	FB25-3	2.5T	VCD500-580	500-580	48

BRAND	TYPICAL MODEL	TONNAGE	BATTERY TYPE	AH	VOLTAGE
Toyota	FB10-14	1.0-1.4T	VCD400	400	48
	FB15-18	1.5-1.8T	VCD400-450-460	400-450-460	48
	FB20-25	2.0-2.5T	VCD500-580	500-580	48
	FB30	3.0T	VCDH580	580	72
	7FBE10-18	1.0-1.8T	VCF400	400	48
	7FBE20	2.5T	VCF400	400	48
	7FB30-35	3.0T	VCF400	400	80
	8FBN20	2.0T	VCI440-VCI525	400-525	48



Other : SHINKO, HYSTER, HYUNDAI, JUMBO, LINDE, CRACK, DAEWOO, SUMITOMO, YALE, CROWN, BT contact sales representative for more detail.

ROCKET TRACTION BATTERY



BATTERY FOR REACH TRUCK

BRAND	TYPICAL MODEL	TONNAGE	BATTERY TYPE	AH	VOLTAGE
Mitsubishi	RBS10CA/CB	1.0T	VCF400	400	24
	RBS15-18CA/CB	1.5-1.8T	VCF280	280	48
	RBS20-25CA/CB	2.0-2.5T	VCI335,VCF335	335	48
	RBS30CA/CB	3.0T	VCI365	365	48
	FBR10	1.0T	VCF400	400	24
	FBR15	1.5T	VCF280	280	48
	FBR20	2.0T	VCI365	365	48
Nissan	HCO1L15HU	1.5T	VCF280	280	48
	YU01L15TU	1.5T	VCF280	280	48
	JHCO1L15HU	1.5T	4PzS420,VCI4	420-400	48
	JHCO1L18CU	1.8T	4PzS420,VCI4	420-400	48
	YU02L20-25U	2.0T	VCI335	335	48
	YU02L30U	3.0T	VCI365	365	48

BRAND	TYPICAL MODEL	TONNAGE	BATTERY TYPE	AH	VOLTAGE
Nichiyu	FBR10-13	1.0-1.3T	VCF400	400	24
	FRB15-18	1.5-1.8T	VCF280	280	48
	FRB20-25	2.0-2.5T	VCI335,VCF335	335	48
	FRB30	3.0T	VCI365	365	48
TCM	FRHB15A4	1.5T	VCF280	280	48
	FRHB20-8	2.0T	VCF335,VCI365	335-365	48
Komatsu	FB10-13R	1.0-1.3T	VCF198,VCI225	198-225	48
	FB14-18R	1.4-1.8T	VCF280	280	48
	FB20-25R	2.0-2.5T	VCI365,VCF400	365-400	48
Toyota	FBR10-13	1.0-1.3T	VCF198,VCI225	198-225	48
	FBR15-18	1.5-1.8T	VCF280,VCI335	280-335	48
	FBR20-30	2.0-3.0T	VCI440	440	48
	7FBR20	2.0T	VCF335,350,400	335-350-400	48
	7FBR25-30	2.5-3.0T	VCF350,400,VCI440	350-400-440	48



BATTERY FOR POWER PALLET AND STACKER

BRAND	TYPICAL MODEL	TONNAGE	BATTERY TYPE	AH	VOLTAGE
Mitsubishi	SBP16N2	1.6T	2PzS250	250	24
	PBP20N2R	2.0T	2PzS250	250	24
Nichiyu	NTT100	1.0T	VCD210-VCD250	210-250	24
Komatsu	MPF10	1.0T	VCF400,350,VCI335	400-350-335	24
Toyota	4CBTY2	2.0T	VCD170	170	48

TSB TRACTION BATTERY



ISO 14001 : 2004
ISO 9001 : 2008
ISO/TS 16949 : 2009

BATTERY FOR COUNTERBALANCED FORKLIFT

BRAND	TYPICAL MODEL	TONNAGE	BATTERY TYPE	AH	VOLTAGE
Mitsubishi	FB15CA	1.5T	VDP8AC	435	48
	FB20CA	2.0T	VDP9AC	475	48
	FB25CA	2.5T	VDP10AC-VDHP600	540-600	48
	FB30CA	3.0T	VDP9AC	475	72
	FB15CB	1.5T	VIP470	470	48
	FB20CB	2.0T	VIP580	580	48
	FB25CB	2.5T	VIP580	580	48
Nissan	FPO1L15U	1.5T	VDP9AC	475	48
	QP02L20U	2.0T	VDP10AC-VDHP600	540-600	48
	QP02L25U	2.5T	VDP10AC-VDHP600	540-600	48
	P1B2L20U	2.0T	VDP10AC-VDHP600	540-600	48
	P1B2L25U	2.5T	VDP10AC-VDHP600	540-600	48

BRAND	TYPICAL MODEL	TONNAGE	BATTERY TYPE	AH	VOLTAGE
Nichiyu	FB10-15PN	1.0-1.5T	VDP8AC	435	48
	FB20PN	2.0T	VDP9AC	475	48
	FB25PN	2.5T	VDP10AC-VDHP600	540-600	48
	FB30PN	3.0T	VDP9AC	475	72
	TCM	FBL15	1.5T	VDP8AC	435
FB15H4		1.5T	VDP10AC	540	48
FBL20-25		2.0-2.5T	VDP10AC-VDHP600	540-600	48
FB30-6		3.0T	VDP9AC	475	72
FB30-5		3.0T	VFPI0	720	48

Other : SHINKO, HYSTER, HYUNDAI, JUMBO, LINDE, CRACK, DAEWOO, SUMITOMO, YALE, CROWN, BT contact sales representative for more detail.

TSB TRACTION BATTERY

BATTERY FOR COUNTERBALANCED FORKLIFT

BRAND	TYPICAL MODEL	TONNAGE	BATTERY TYPE	AH	VOLTAGE
Komatsu	FB10EX-7	1.0T	VDP8AC	435	48
	FB15EX-5,7	1.5T	VDP8AC-VDP9AC	435-475	48
	FB15A-12	1.5T	VDP8AC-VDP9AC	435-475	48
	FB20EX-8	2.0T	VDPI0AC-VDHP600	540-600	48
	FB20A-12	2.0T	VIP555	555	48
	FB25-3	2.5T	VDPI0AC-VDHP600	540-600	48

BRAND	TYPICAL MODEL	TONNAGE	BATTERY TYPE	AH	VOLTAGE
Toyota	FB10-14	1.0-1.4T	VDP8AC	435	48
	FB15-18	1.5-1.8T	VDP8AC-VDP9AC-VDHP485	435-475-485	48
	FB20-25	2.0-2.5T	VDPI0AC-VDHP600	540-600	48
	FB30	3.0T	VDHP600	600	72
	7FBE10-18	1.0-1.8T	VFP400	400	48
	7FBE20	2.5T	VFP400	400	48
	7FB30-35	3.0T	VFP400	400	80
	8FBN20	2.0T	VIP470-VIP555	470-555	48

BATTERY FOR REACH TRUCK

BRAND	TYPICAL MODEL	TONNAGE	BATTERY TYPE	AH	VOLTAGE
Toyota	RBS10CA/CB	1.0T	VFP400	400	24
	RBS15-18CA/CB	1.5-1.8T	VFP4	290	48
	RBS20-25CA/CB	2.0-2.5T	VFP5A	350	48
	RBS30CA/CB	3.0T	VIP390	390	48
	FBR10	1.0T	VFP400	400	24
	FBR15	1.5T	VFP4	290	48
	FBR20	2.0T	VIP390	390	48
Nissan	HCO1L15HU	1.5T	VFP4	290	48
	YU01L15TU	1.5T	VFP4	290	48
	JHCO1L15HU	1.5T	VHP4A	420	48
	JHCO1L18CU	1.8T	VHP4A	420	48
	YU02L20-25U	2.0T	VFP5A	350	48
	YU02L30U	3.0T	VIP390	390	48

BRAND	TYPICAL MODEL	TONNAGE	BATTERY TYPE	AH	VOLTAGE
Nichiyu	FBR10-13	1.0-1.3T	VFP400	400	24
	FRB15-18	1.5-1.8T	VFP4	290	48
	FRB20-25	2.0-2.5T	VFP5A	350	48
	FRB30	3.0T	VIP390	390	48
TCM	FRHB15A4	1.5T	VFP4	290	48
	FRHB20-8	2.0T	VFP5A-VIP390	350-390	48
Komatsu	FB10-13R	1.0-1.3T	VFP3A-VIP3A	210-240	48
	FB14-18R	1.4-1.8T	VFP4	290	48
	FB20-25R	2.0-2.5T	VFP400	400	48
Toyota	FBR10-13	1.0-1.3T	VFP3A-VIP3A	210-240	48
	FBR15-18	1.5-1.8T	VFP4-VFP5A	290-350	48
	FBR20-30	2.0-3.0T	VIP470	470	48
	7FBR20	2.0T	VFP5A-VFP400	350-400	48
	7FBR25-30	2.5-3.0T	VFP5A-VFP400-VIP470	350-400-470	48

TSB TRACTION BATTERY



BATTERY FOR POWER PALLET AND STACKER

BRAND	TYPICAL MODEL	TONNAGE	BATTERY TYPE	AH	VOLTAGE
Nichiyu	NTT100	1.0T	VDP4B-VDP5A	225-265	24
Komatsu	MPF10	1.0T	VFP400-VFP5A	400-350	24
Toyota	4CBTY2		VDP3A	170	48

ROCKET

LONGEST EDITION



GENUINE DEEP CYCLE BATTERY



APPLICATIONS



Aerial Work Platform



Golf Cart



Ride-on Scrubber



Solar Power

CAP OPTIONS



Gang Cap



Individual Caps



SPW Caps

*SPW : Single Point Watering System

TYPE	MODEL	VOLTAGE	5 HR RATE AH	20 HR RATE AH	DIMENSIONS (MM)			CAPACITY		TERMINAL	WEIGHT (KG)	FOR GOLF CAR 1 UNIT
					L	W	H	@25 AMPS	@75 AMPS			
Deep Cycle Battery	L-105	6 V	185	225	259	179	245/278	447	115	EHPT,EAPT	28	8 Pcs.
Deep Cycle Battery	L-875	8 V	145	170	262	181	245/278	295	75	EHPT,EAPT	28	6 Pcs.
Deep Cycle Battery	L-1275	12 V	120	150	329	181	245/278	280	70	EHPT,EAPT	38	4 Pcs.

TSB STARTER BATTERY



BRAND	MODEL	VOLTAGE	DIMENSIONS (MM)			WEIGHT (KG)	TERMINAL DIRECTION	FOR FORKLIFT	FOR CAR
			L	W	H				
TSB	NS60L	45	236	127	200/222	7.7	B	FG10-35	Toyota Vios, Honda C/H-RV, Civic, Nissan Almera
TSB	NX120-7L	85	303	170	201/224	4.6	A	FD10-35	MITSUBISHI PAJERO SPORT 2.5, TRITON 2.4, 2.5, 3.2

COMMODITIES

ENGINE OIL GOLD



GIVE YOU PEACE OF MIND

Mitsubishi Forklift GOLD CI-4/SL engine oil operates under extreme service conditions and maintains proper viscosity. It is designed to give extra protection and keeps engine clean for a longer period. Mitsubishi Forklift GOLD CI-4/SL is specially formulated to resist wear, extreme pressure and excessive temperature.

PART NUMBER	DESCRIPTION	PACKAGING
A990021210	Engine Oil Cl-4 Gold 15w-40	6 x 4L Pack
A990021200	Engine Oil Cl-4 Gold 15w-40	6 x 5L Pack
A990021220	Engine Oil Cl-4 Gold 15w-40	18L Bottle

PREMIUM ATF



EXCELLENT PERFORMANCE OUTSTANDING PROTECTION

Mitsubishi Forklift Trucks Premium ATF transmission oil formulated to meet the viscosity and frictional requirements for positive clutch pack engagement. It provides superior wear protection for all range of trucks which can contribute to long transmission life.

PART NUMBER	DESCRIPTION	PACKAGING
A990023550	ATF DIII Transmission Oil	6 x 5L Pack
A990023500	ATF DIII Transmission Oil	18L Bottle

HYDRAULIC OIL AW32



Hydraulic Oil AW32 is a premium quality anti-wear hydraulic oil which is formulated with premium low zinc additives, possesses excellent oxidation stability, anti-wear, anti-corrosion and anti-foam properties.

PART NUMBER	DESCRIPTION	PACKAGING
A990023000	Hydraulic Oil AW32	18L Bottle

GEAR OIL SAE-140



GL-4 gear oil is formulated from premium quality base oils and additives to provide high level of protection for manual transmission and transaxles, hypoid gears, spur, bevel, helical spiral-bevel and worm gears in differentials, transfer cases and steering mechanism.

PART NUMBER	DESCRIPTION	PACKAGING
A990024020	GL-4 gear oil	5 L

LONG-LIFE PREMIXED COOLANT



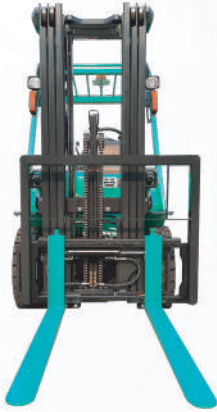
Suitable for all cooling systems operated in both light and heavy-duty applications.

- Long-life : Extended service life up to 5 years or 250,000 km
- Anti-Freeze: Protection up to -38 °C
- Anti-Boil: Delay boiling point to 128 °C, prevent overheating
- Anti-Corrosive: Protect new aluminum/magnesium alloys radiator
- Anti-Cavitation: Prevent foam and the retention of air
- NAP Free: Free of Nitrites, Amines, Phosphates

PART NUMBER	DESCRIPTION	PACKAGING
A990024190M	Long-life Premixed Coolant	5 L



SIDESHIFTER



PART NUMBER	DESCRIPTION
A990021650	S / S Assy, 2.0 - 2.5 ton
A990021660	S / S Assy, 3.0 ton
A990021670	S / S Assy, 3.0 ton

UNIVERSAL SEAT



- Adjustable backrest fore & aft 45 degrees.
- Sliding adjustment of 150mm
- Retractable safety seat belt
- Document bag
- Mechanical suspension integrated in cushion
- Universal mounting

PART NUMBER	DESCRIPTION	REMARKS
9051400050	SEAT ASSY, Suspension, BF5-3	Suitable for other brands forklift except MIT
A990058010	SEAT ASSY, Suspension, BF2-3	Compatible with most MIT forklift models

HIGH VISIBILITY SEAT BELT



- Clear visual cue on seat belt usage.
- Bright orange colour seat belt strap stand out against background.
- Fits most forklift trucks seat assembly.

PART NUMBER	DESCRIPTION
A990058110	High Visibility Seat Belt

LOCKABLE FUEL CAP

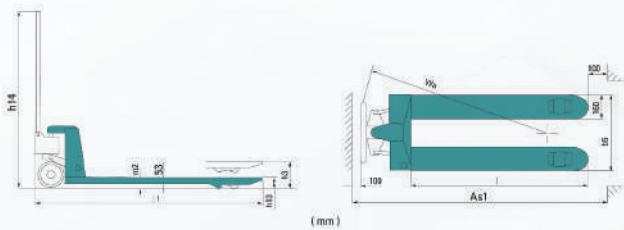


- Anti-theft device
- Locking fuel cap with keys
- Fits most lower-to-mid capacity forklift models*

*higher capacity forklifts may have different fuel inlet and will not fit.

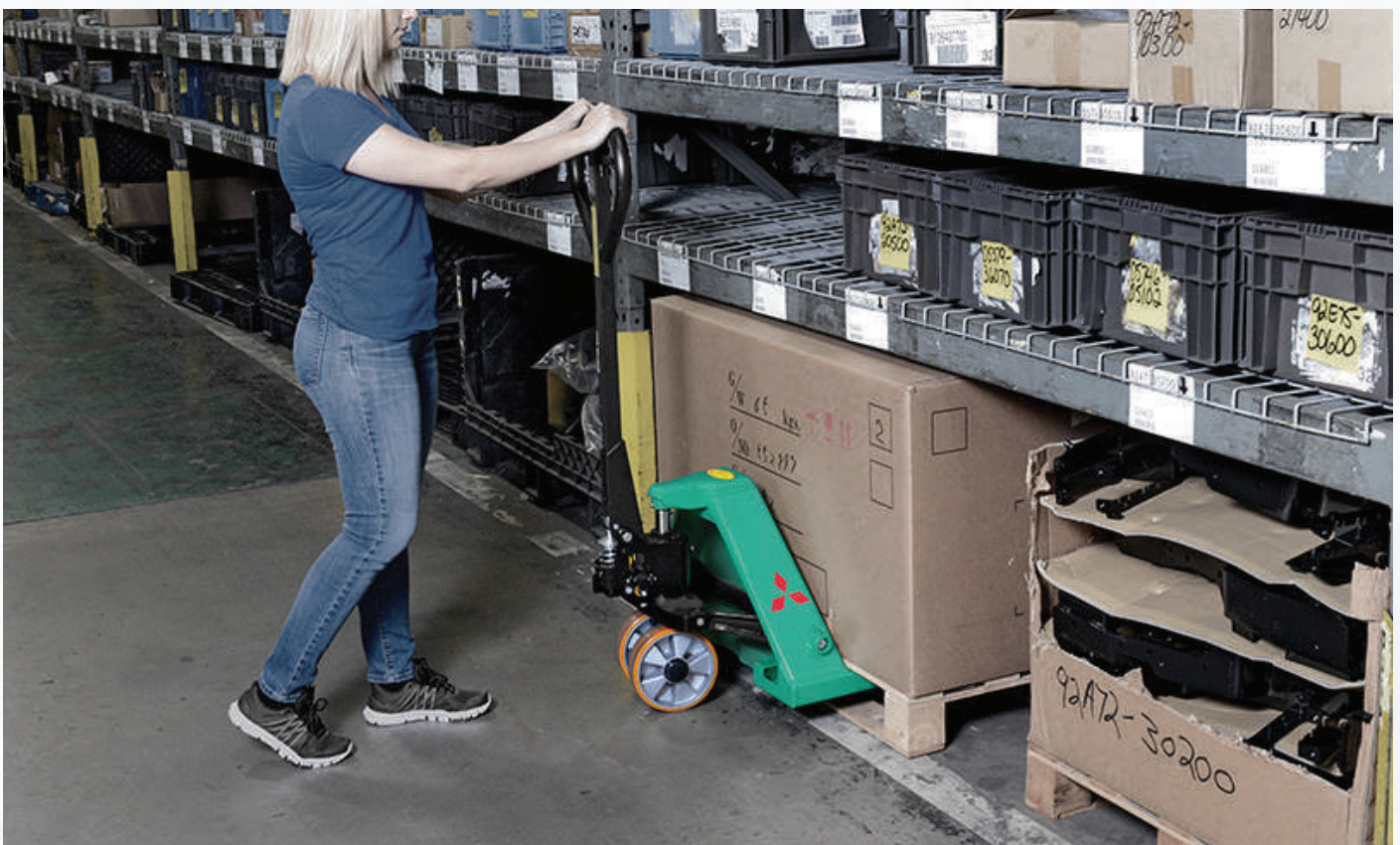
PART NUMBER	DESCRIPTION
A990036025	Lockable Fuel Cap

HAND PALLET TRUCK



PART NUMBER	DESCRIPTION
A9900-70000	PALLET JACK, MITSUBISHI 2.5T 685X1220
A9900-70500	PALLET JACK, MITSUBISHI 2.5T 520X1220
A9900-70030	PALLET JACK, MITSUBISHI 3.0T 685X1220
A9900-70380M	PALLET JACK, MITSUBISHI 5.0T 685x1220
A9900-70100	PALLET JACK, MITSUBISHI 2.5T 685x1220 GALVANISED
A9900-70110	PALLET JACK, MITSUBISHI 3.0T 685x1220 GALVANISED

- Ergonomic rubber wrapped handle for comfortable operation.
- 3 positions of hand control - Raise, Lower and Neutral.
- Polyurethane steer wheels and load rollers.
- 210° steering arc and small turning radius.
- Adjustable pump cap ensuring long service life.
- Equipped with overload valve for long serving time.
- Entry / exit roller system for easy travel.
- Fork lowering speed is controllable, operated by hand control and foot pedal.
- 12 lubrication grease nipples on all moveable pairs for easy maintenance.



FORKS



- Made from high quality steel
- Excellent hardness and durability
- Available fork length up to 2438mm
- For Class II A to Class IVA forklift trucks

PART NUMBER	DESCRIPTION	REMARKS
A990016300	FORK, 100 x 35 x 1070	Class IIA 1 ~ 1.8 ton @ 500 mm LC
A990016320	FORK, 100 x 35 x 1220	
A990016010	FORK, 100 x 45 x 1070	Class IIA 2 ~ 2.5 ton @ 500 mm LC
A990016030	FORK, 100 x 45 x 1220	
A990016040	FORK, 100 x 45 x 1370	
A990016050	FORK, 100 x 45 x 1520	
A990016070	FORK, 122 x 45 x 1830	
A990016500	FORK, 122 x 40 x 1070	
A990016520	FORK, 122 x 40 x 1220	
A990016530	FORK, 122 x 40 x 1370	Class IIIA 3 ~ 3.5 ton @ 500 mm LC
A990016540	FORK, 100 x 45 x 1520	
A990016100	FORK, 122 x 45 x 1070	
A990016120	FORK, 122 x 45 x 1220	
A990016130	FORK, 122 x 45 x 1370	
A990016140	FORK, 122 x 45 x 1520	Class IIIA 4 ~ 5 ton @ 500 mm LC
A990016160	FORK, 122 x 50 x 1830	
A990016170	FORK, 122 x 50 x 2134	
A990016220	FORK, 150 x 50 x 1120	Class IIIA 4 ~ 5 ton @ 500 mm LC
A990016230	FORK, 150 x 50 x 1370	
A990016240	FORK, 150 x 50 x 1520	
A990016260	FORK, 150 x 50 x 1830	
A990016420	FORK, 150 x 60 x 1120	Class IVA 5 ~ 8 ton @ 500 mm LC
A990016430	FORK, 150 x 65 x 1370	
A990016440	FORK, 150 x 65 x 1520	
A990016460	FORK, 150 x 65 x 1830	
A990016470	FORK, 150 x 65 x 2134	
A990016480	FORK, 150 x 65 x 2438	



FORKLIFT ENHANCEMENT DEVICES

LED BULBS



PART NUMBER	DESCRIPTION
A990002000	Bulb, Set LED 12V
A990002010	Bulb, Front LED 12V
A990002020	Bulb, Side LED 12V
A990002030	Bulb, Brake LED 12V
A990002040	Bulb, Reverse LED 12V
A990002050	Bulb, Signal LED 12V

STROBE LIGHTS AND LAMPS



PART NUMBER	DESCRIPTION	REMARKS
A990052000	Strobe LED, Amber Rectangle	
A990052010	Strobe LED, Red Rectangle	
A990052050	Strobe LED, Amber Round	With mounting bracket
A990052100	Strobe LED, Amber Round	W/O mounting bracket
A990052120	Strobe, Xenon Amber	W/O mounting bracket
A990052210	Rear Warning Light	
A990052200	Lamp, Head LED	

TRANSMISSION INTERLOCK

- Reduced Maintenance Costs
- Increase Site Safety
- Reduced expenditure and increased productivity

PART NUMBER	DESCRIPTION
A990058003	Transmission Interlock (TXP)



WEIGH SAFE



The WDU MINI SERIES is an ultra slim, weatherproof, microprocessor based digital weight indicator with a 12.5mm LED display featuring tare weight, lock and hold, accumulative weight and number of lifts. It incorporates a specially designed "DIGI-LOCK" forklift weighing software. It is easy to use and most importantly, easy to install by most technicians

- Accuracy of +/-1 to 2% of forklift truck capacity
- Less than 5 seconds to actual load to be measured
- Weight and number of lifts perform can be totalized by simple recall function

PART NUMBER	DESCRIPTION
A99005831	Load, Weigh Scale

VIEW-ON-FORKS



- View actual forks and load position overhead
- More accurate load positioning
- Improves overall material handling productivity
- 7" LED monitor display
- IP67 certified for dust and water resistance

PART NUMBER	DESCRIPTION
A990052300	View - On - Forks

EASY PALLET



COMPACT AND STRONG STEEL BOX

- Rust proofing
- Light Weight - be able to stack by hand

OUTER SIZE	INNER SIZE	WEIGHT	WEIGHT LOAD
1170 x 1150 x 737 mm.	1110 x 1090 x 635 mm.	41 kg.	800 kg.

STACKING FRAME



REDUCE TRANSPORTATION COST BY STACKING PLASTIC PALLET

- Fall Prevention
- Easy to Assemble and disassemble
- Flexible design

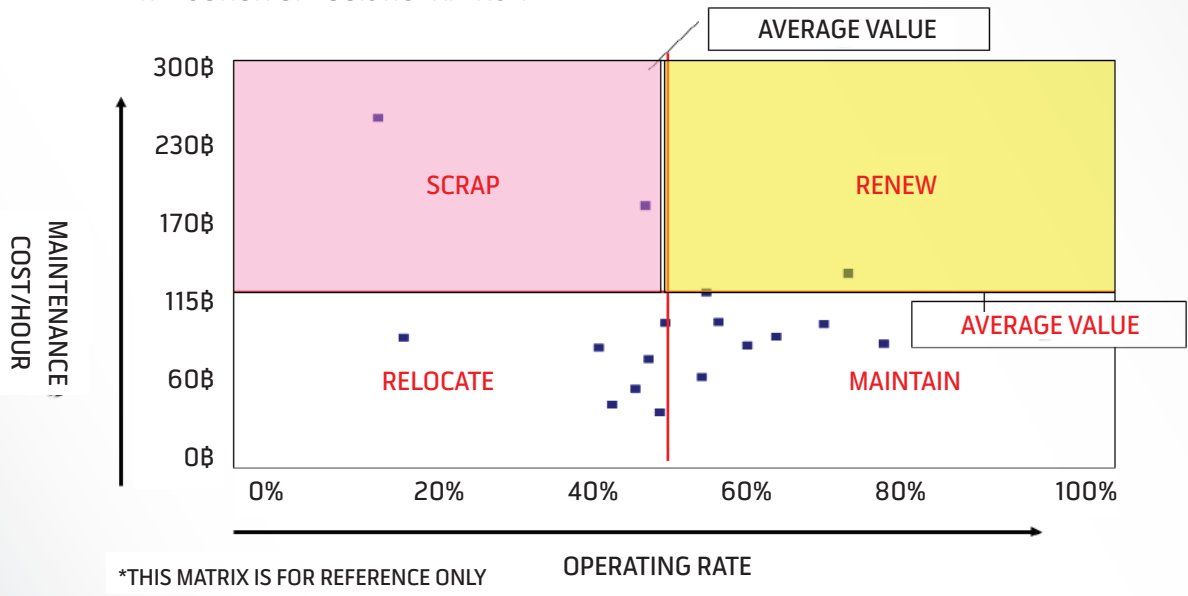
FLEET MANAGEMENT SOLUTION

Possessing a proper fleet management can benefit your organization with meaningful and proper fleet information, and providing stable financial future investments with an overall scope of your products using the fleet management program.

Possessing such an overall scope towards your fleet using our management system can also give you an advantage towards operation in regards of time spent and stopped. Fleet management will be able to highlight your benchmark operation requirements through the deepest details of your industry.

Our fleet management system outlines various available methods to handle the fleet operations based on your organization's mission and vision. Having a proper fleet management can ensure you to minimize the challenges of operational procedures and uncovering the full potential of your operations.

BASED ON THE SURVEY RESULT, PROPOSAL WILL BE MADE TO ACHIEVE COST REDUCTION OF LOGISTIC EXPENSE.





RENTAL BUSINESS

We rent forklifts, boom lifts, scissors lifts, vertical lifts from our rental fleet for short term to long term customer needs. We offer quality before delivery through system check ups by our highly experienced teams.

BENEFIT OF RENTAL EQUIPMENT

CAPITAL IS CONSERVED: renting enables you to acquire the use of equipment without capital outlay, which means no expensive upfront or loan costs with high interests.

BUDGETING: you are able to budget for the future with fixed costs every month without any unexpected maintenance costs arising.

UNFORESEEN NEEDS: at unpredictable peak periods or when essential equipment breaks down or some businesses experience seasonal highs and lows, rental forklifts can provide immediate relief.

MODERNIZATION OF YOUR EQUIPMENT: renting allows you to always have the most up-to-date equipment and technology. Once your equipment ages or the end of your renting terms, your old equipment is replaced with new ones.

WE ARE AUTHORIZED DEALER of Mitsubishi forklifts and JLG aerial work platforms. You can rely on the quality of all these trucks.

If you're looking for the conveniences with efficient financing solutions, no worry about maintenance, no big investment or you want to use it at specific periods, we have the answer for you. We have flexible solutions for your service.

- Short term rental service
- Long term rental service





USED EQUIPMENT

We are responsible for the working process of the used machines to perfection, and to boost the level of performance towards the satisfaction of customers staging in genuine or O.E.M, pre and post QC Checking before delivery to customer hands.

We find a source including variety of branded machines & equipment & the used machines & equipment from our exclusive brands such as Mitsubishi Forklift, JLG AWP or any popular brands which may fulfill our customers' needs.



5 BENEFITS OF BUYING USED EQUIPMENT WITH UNITED

GENEROUS UPFRONT SAVING They are more budget-friendly. You are able to purchase a high-quality and high-performing workhorse for much less of its market value.

INCREASE YOUR BUYING POWER With the same money, you are able to buy more workhorses to improve your workforce productivity and still have the budget for minor maintenance.

EASE OF OPERATION AND FAMILIARITY You are already familiar with a used forklift and can easily take over the job without spending time and money on the training.

A WIDE RANGE OF OPTIONS AVAILABLE You will be able to shop around and compare various models until you find the forklift that has all the features and load capacity that you are looking for.

70 YEARS OF EXPERIENCE WITH A PROFESSIONAL TEAM You can fully rely on us.

MITSUBISHI USED EQUIPMENT



MODEL	FB25CA
SERIAL	241C-02350
MAST	2SP40 (4 M)
FORK	Carton Clamp
HOUR	7024
YEAR	2013



MODEL	FB25CA
SERIAL	241C-02349
MAST	2SP40 (4 M)
FORK	LX
HOUR	9710
YEAR	2015



MODEL	FB30CA
SERIAL	251AC-2054
MAST	2SP30 (3 M)
FORK	L1070
HOUR	11014
YEAR	2015



MODEL	FG25NT
SERIAL	CF17D-68606
MAST	2SP30 (3 M)
FORK	1820
HOUR	8594
YEAR	2017



MODEL	FB30CA
SERIAL	251A-C1875
MAST	2SP30 (3 M)
FORK	LX
HOUR	7102
YEAR	2014



MODEL	FD25NT
SERIAL	CF18C-81621
MAST	3FP47 (4.7 M)
FORK	1220
HOUR	9587
YEAR	2017



MODEL	FG15NT
SERIAL	CF25C-70044
MAST	2SP30 (3 M)
FORK	L920
HOUR	9455
YEAR	2015



MODEL	FG30
SERIAL	CF13F-48195
MAST	2SP40 (4 M)
FORK	1220
HOUR	7399
YEAR	2016



MODEL	FG15NT
SERIAL	CF250-70112
MAST	2SP30 (3 M)
FORK	920
HOUR	5144
YEAR	2016



MODEL	RBS10CA
SERIAL	184E-00088
MAST	R13K400PS-68019T
FORK	L770
HOUR	4003
YEAR	2016



MODEL	RBS15CA
SERIAL	185E-00343
MAST	R15K600MS-4Y169T
FORK	L1140
HOUR	7630
YEAR	2015



MODEL	FG40NT
SERIAL	CF40-00027
MAST	2SP40 (4 M)
FORK	1220
HOUR	13514
YEAR	2016

JLG USED EQUIPMENT



MODEL	24RS
S/N NO.	B300000813
YEAR	2013
HRS.	190



MODEL	41AM-DC
S/N NO.	0900035351
YEAR	2014
HRS.	-



MODEL	24RS
S/N NO.	B300000782
YEAR	2013
HRS.	3184



MODEL	600AJ
S/N NO.	0300137423
YEAR	2009
HRS.	1507



MODEL	4045R
S/N NO.	B200057464
YEAR	2019
HRS.	65



MODEL	800AJ
S/N NO.	0300139212
YEAR	2010
HRS.	-



MODEL	4045R
S/N NO.	B200059778
YEAR	2019
HRS.	82



MODEL	860SJ
S/N NO.	030018940
YEAR	2008
HRS.	7436



MODEL	4045R
S/N NO.	B200059776
YEAR	2019
HRS.	57



MODEL	860SJ
S/N NO.	0300141582
YEAR	2010
HRS.	3393



MODEL	4045R
S/N NO.	B200059777
YEAR	2019
HRS.	69



MODEL	E450AJ
S/N NO.	0300193307
YEAR	2015
HRS.	332

The **highest quality parts**
for operational safety and
equipment longevity

MORE ENQUIRIES,
PLEASE CONTACT US AT





ROYAL FORKLIFT TRUCK

Established in Feb. 2010, Royal Forklift specializes in material handling equipment design and manufacture.

Royal Forklift current product range covers 4 series, include 1T-12T industry forklift, 2.5T-5T rough terrain forklift, 1.3T-3T warehouse equipment, aerial working platform. Royal Forklift own advanced parts processing center, robot welding equipment, parts automatic hoist conveyor line, coating line, assembly line, forklifts performance test line, parts pre-test-bed and advanced ERP information management system. Taking professionalization, internationalization, and green environmental protection as standards, Royal is determined to turn into the most respectable forklift brand.

Royal is a professional material handling equipment manufacturer in China, we devote ourselves to the HME industry, with an honest, open and sincerity cooperation attitude, we aim to offer the best cost-performance products, best service and to maximize the benefit of all Royal's partners.



ROYAL FORKLIFT TRUCK LI-ION BATTERY NEW GENERATION



LI-ION BATTERY POWER NOW

Rapid and opportunity charging ensures continuous availability of the material handling equipment. Lightweight design, highly efficient, maintenance-free, and a long service life are all benefits of the the R series. The newly designed chassis has a low center of gravity allowing the operator to feel stable while turning the forklift.



HIGH CAPACITY LI-ION BATTERY PACKS

Integrated Battery Management System (BMS) continually monitors energy management and ensures reliable operation ROYAL provides Li-Ion battery with 5 years or 10000 hours warranty.



BATTERY CAPACITY				
Pack 1	2.0-3.5 lithium battery	Charing 1-2 hours	Working 7 hours	153.6V/100AH
Pack 2	2.0-3.5 lithium battery	Charing 1-2 hours	Working 8 hours	153.6V/150AH
Pack 3	2.0-3.5 lithium battery	Charing 1-2 hours	Working 9 hours	153.6V/180AH

TYPE	MODEL	CAPACITY	LOAD CENTER	MAXIMUM MAST HEIGHT
Electric	E20H	2000 kg	500 mm	4145 mm
Electric	E25H	2500 kg	500 mm	4145 mm
Electric	E30H	3000 kg	500 mm	4160 mm
Electric	E35H	3500 kg	500 mm	4160 mm



ROYAL TRUCK ROUGH TERRAIN FORKLIFT

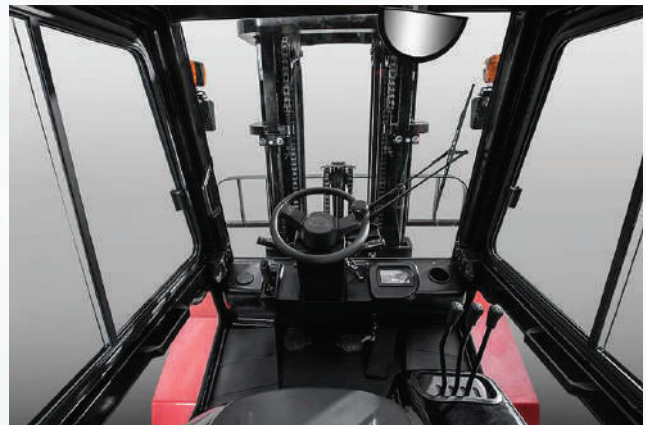
HIGH-QUALITY TYRES

Industrial tires with a wide footprint help to provide more stability and lifting capacity in rough work environments.



HIGH GROUND CLEARANCE

Offer more maneuverability and keep the machine moving in the roughest of applications.



WIDE-VIEW MAST

Wide-view mast provides excellent through mast visibility and improving the work efficiency, as well as allowing safe operation of the forklift.



EXCELLENT FLEXIBILITY IN ROUGH TERRAIN

Powershift transmission provides ultimate traction during inclement weather conditions and rough operating ground.



SUPERIOR PERFORMANCE IN EXTREME CONDITIONS COMPACT SIZE MEETS WITH EUROPEAN STANDARDS.

A superior full-floating overhead guard is installed with rubber damping instead of the transitional rigid design. This improvement helps to greatly reduce machine vibration and offer a smoother ride over rough terrain, which helps to reduce operator fatigue. World-renowned brand engines for superior performance.



MITSUBISHI S4S 2WD 2-3.5 TON



RATED OUTPUT	RATED TORQUE
35.5 kw/2250 rpm	182 N.m/1800 rpm

YANMAR 4TNE98 4WD 2-3.5 TON



RATED OUTPUT	RATED TORQUE
42.1 kw/2300 rpm	196 N.m/1700 rpm

PERKINS 1104C-44TA 2WD 4.0-5.0 TON



RATED OUTPUT	RATED TORQUE
74.5 kw/2300 rpm	415 N.m/1350 rpm



Designed for high mobility
& all working condition



MORE ENQUIRIES,
PLEASE CONTACT US AT



SERVICE CENTERS AND SERVICE DEALER



HEAD OFFICE

No. 2 Phahon Yothin Rd., Prachathipat,
Thanyaburi, Pathumthani 12130

Tel : 02-033-5959
Fax : 02-532-1261



WEST SERVICE CENTER

33/13 Moo 4 Rama II Rd.,
Nadi, Muang Samut Sakhon,
Samut Sakhon 74000

Tel : 02-033-5959 #407
Fax : 034-440-634

Service Dealer, Lamphun

Service Dealer, Udon Thani



EAST SERVICE CENTER

398/42 Moo 10 Khao Khan Song,
Siracha, Chon Buri, 20110

Tel : 02-033-5959 #304
Fax : 038-350-040

Service Dealer, Surat Thani

Service Dealer, Songkhla



OUR CLIENTS



UNITED MOTOR WORKS (SIAM) PUBLIC COMPANY LIMITED

Driven *by* Excellence



UNITED MOTOR WORKS (SIAM) PCL
No.2 Phahon Yothin Road, Tambol Prachathipat,
Amphur Thanyaburi, Pathumthani 12130, Thailand
Tel: 0-2033-5959 #1



United Motor Works Siam PCL



UMWS United



@Unitedmotorworks



www.umwsiam.com



WEBSITE